

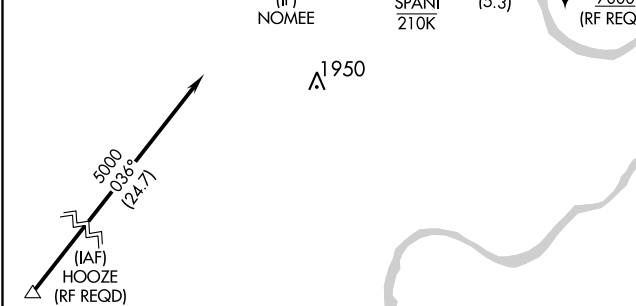
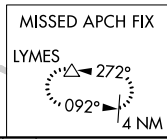
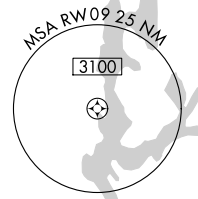
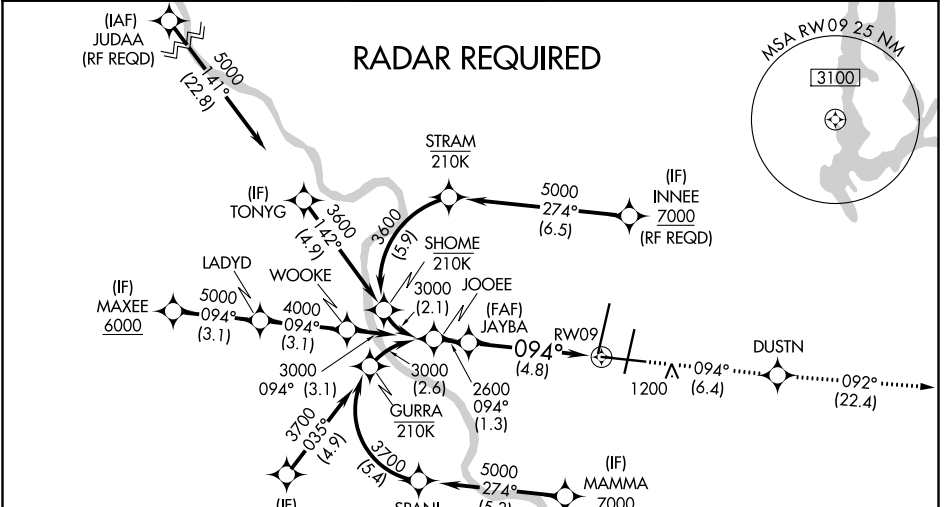
APP CRS	Rwy Idg	<b>9501</b>
<b>094°</b>	TDZE	<b>1015</b>
	Apt Elev	<b>1026</b>

# RNAV (RNP) Z RWY 9

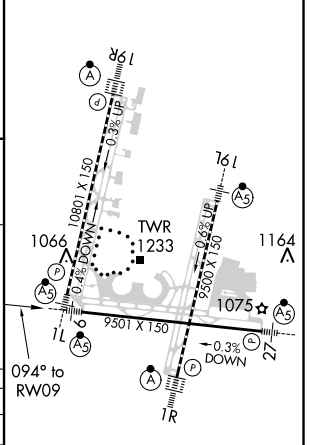
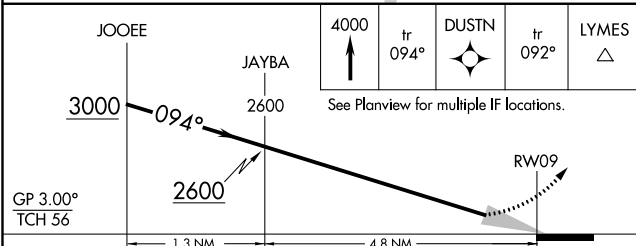
KANSAS CITY INTL (MCI)

For uncompensated Baro-VNAV systems, procedure NA below -20°C (-4°F) or above 54°C (130°F). For inop MALS/R, increase RNP 0.30 visibility to RVR 6000. GPS required.		MISSED APPROACH: Climb to 4000 on track 094° to DUSTN and on track 092° to LYMES and hold.

D-ATIS <b>128.375</b>	KANSAS CITY APP CON <b>120.95 318.1</b>	INTERNATIONAL TOWER <b>128.2 254.25</b>	GND CON <b>121.8</b>	CLNC DEL <b>135.7</b>	CPDLC
--------------------------	--	--	-------------------------	--------------------------	-------



ELEV 1026	<b>D</b>	TDZE 1015
-----------	----------	-----------



CATEGORY	A	B	C	D
RNP 0.30 DA		1393/40	378 (400-¾)	

## AUTHORIZATION REQUIRED

HIRL all Rwys  
TDZ/CL Rwys 1L, 1R, 19R and 19L

NC-3, 25 FEB 2021 to 25 MAR 2021

NC-3, 25 FEB 2021 to 25 MAR 2021