

WAAS CH 72908 W19B	APP CRS 191°	Rwy Idg 10801 TDZE 989 Apt Elev 1026
--	------------------------	---

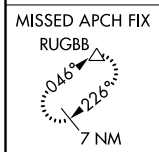
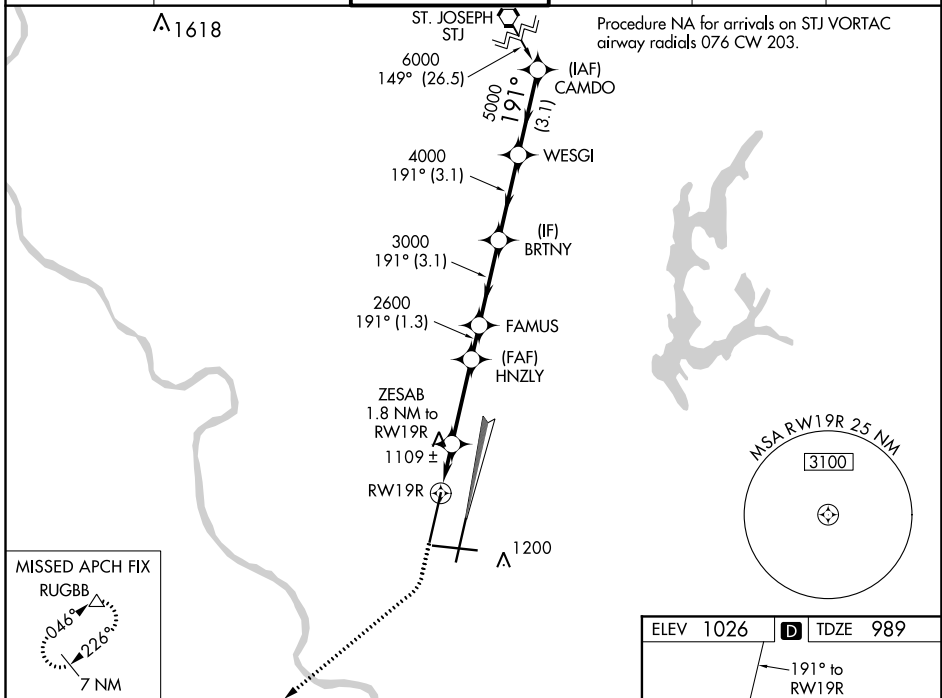
RNAV (GPS) Y RWY 19R

KANSAS CITY INTL (MCI)

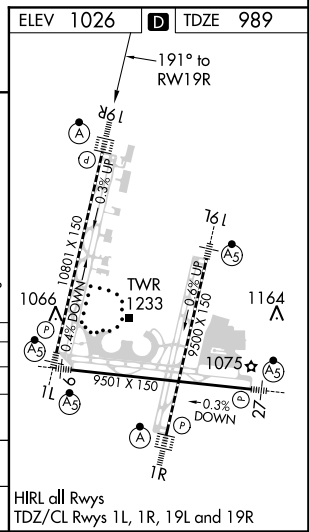
∇ DME/DME RNP-0.3 NA. Simultaneous approach authorized with Rwy 19L. LNAV procedure NA during simultaneous operations. For uncompensated Baro-VNAV systems, LNAV/VNAV NA below -20°C (-4°F) or above 54°C (130°F). For inop ALSF, increase LPV Cat E visibility to RVR 4000, LNAV/VNAV all Cats visibility to RVR 5000 and LNAV Cat E visibility to RVR 6000. Use of FD or AP providing RNAV track guidance required during simultaneous operations.

ALSF-2
MISSED APPROACH: Climb to 2000 then climbing right turn to 4000 direct RUGBB and hold.

D-ATIS 128.375	KANSAS CITY APP CON 120.95 318.1	INTERNATIONAL TOWER 128.2 254.25	GND CON 121.8	CLNC DEL 135.7	CPDLC
--------------------------	--	--	-------------------------	--------------------------	-------



2000	4000	RUGBB	VGSI and RNAV glidepath not coincident (VGSI Angle 3.00/TCH 80).					CAMDO
*LNAV only	ZESAB 1.8 NM to RW19R	HNZLY 2600	FAMUS 3000	BRTNY 4000	WESGI 5000	6000		
1 NM to RW19R		1600		2600		GP 3.00° TCH 55		
1 NM		0.8		-3.1 NM		-1.3 NM		
CATEGORY	A	B	C	D	E			
LPV DA	1189/18		200 (200-½)					
LNAV/VNAV DA	1292/24		303 (300-½)					
LNAV MDA	1380/24	391 (400-½)	1380/40	391 (400-¾)				
CIRCLING	1540-1	514 (600-1)	1540-1½	514 (600-1½)	1580-2	554 (600-2)		



NC-3, 25 FEB 2021 to 25 MAR 2021

NC-3, 25 FEB 2021 to 25 MAR 2021