


WAAS CH 58208 W01A	APP CRS 011°	Rwy Idg TDZE Apt Elev	9500 1017 1026
---------------------------------	------------------------	-----------------------------	---

RNAV (GPS) Y RWY 1R

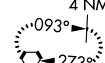
KANSAS CITY INTL (MCI)

▼ For uncompensated Baro-VNAV systems, LNAV/VNAV NA below -20°C (-4°F) or above 54°C (130°F). DME/DME RNP-0.3 NA. For inop ALSF, increase LPV Cat E visibility to RVR 4000, LNAV/VNAV Cat E visibility to RVR 5000 and LNAV Cat C/D/E visibility to RVR 5000. Simultaneous approach authorized with Rwy 1L. LNAV procedure NA during simultaneous operations. Use of FD or AP providing RNAV track guidance required during simultaneous operations.

ALSF-2

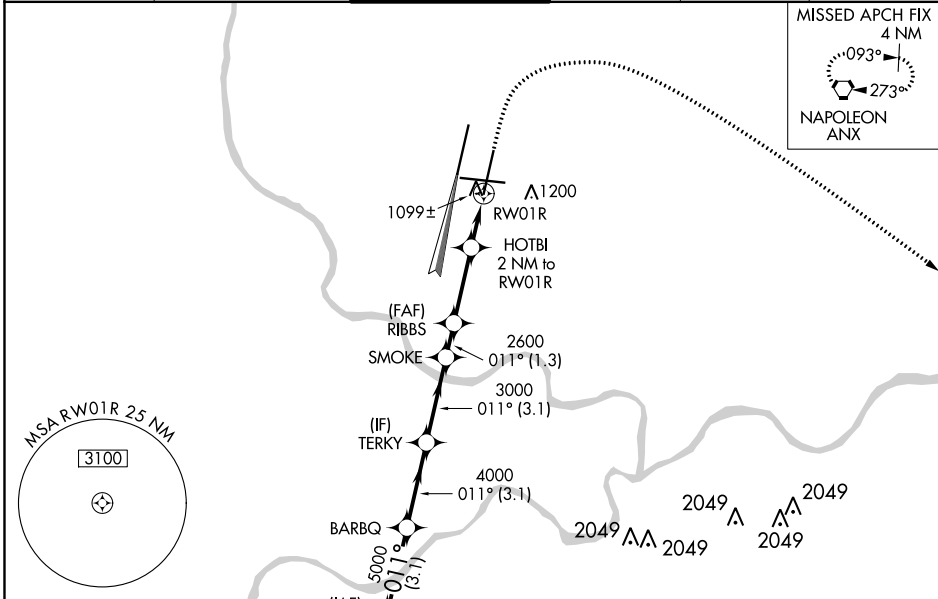


MISSED APPROACH: Climb to 1500 then climbing right turn to 4000 direct ANX VORTAC and hold.

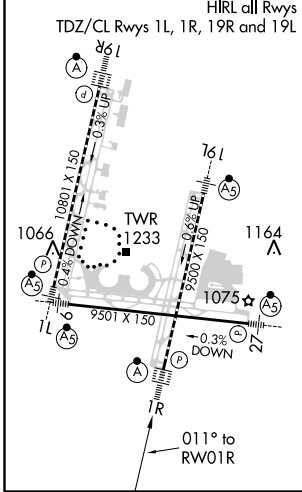


4 NM
093°
273°
NAPOLÉON ANX

D-ATIS 128,375	KANSAS CITY APP CON 120,95 318,1	INTERNATIONAL TOWER 128,2 254,25	GND CON 121,8	CLNC DEL 135,7	CPDLC
--------------------------	--	--	-------------------------	--------------------------	-------



ELEV 1026	D TDZE 1017
-----------	-------------



SPICY	VGSi and RNAV glidepath not coincident (VGSi Angle 3.00/TCH 74).								
6000	011°	BARBQ	TERKY	SMOKE	RIBBS	HOTBI 2 NM to RW01R	1500	4000	ANX
5000		4000	3000	2600	*1700	*0.9 NM to RW01R	*LNAV only		
GP 3.00° TCH 59		3.1 NM		3.1 NM	3.1 NM	1.3 NM	2.8 NM	1.1 NM	0.9 NM
CATEGORY	A		B		C		D		E
LPV DA	1217/18				200 (200-½)				
LNAV/VNAV DA	1327/24				310 (400-½)				
LNAV MDA	1360/24		343 (400-½)		1360/30		343 (400-¾)		
CIRCLING	1540-1		514 (600-1)		1540-1½ 514 (600-1½)		1580-2		554 (600-2)

NC-3, 25 FEB 2021 to 25 MAR 2021

NC-3, 25 FEB 2021 to 25 MAR 2021