


LOC/DME I-MCK <b>110.95</b> Chan 46 (Y)	APP CRS <b>123°</b>	Rwy Idg <b>5698</b> TDZE <b>2583</b> Apt Elev <b>2583</b>
---	------------------------	---

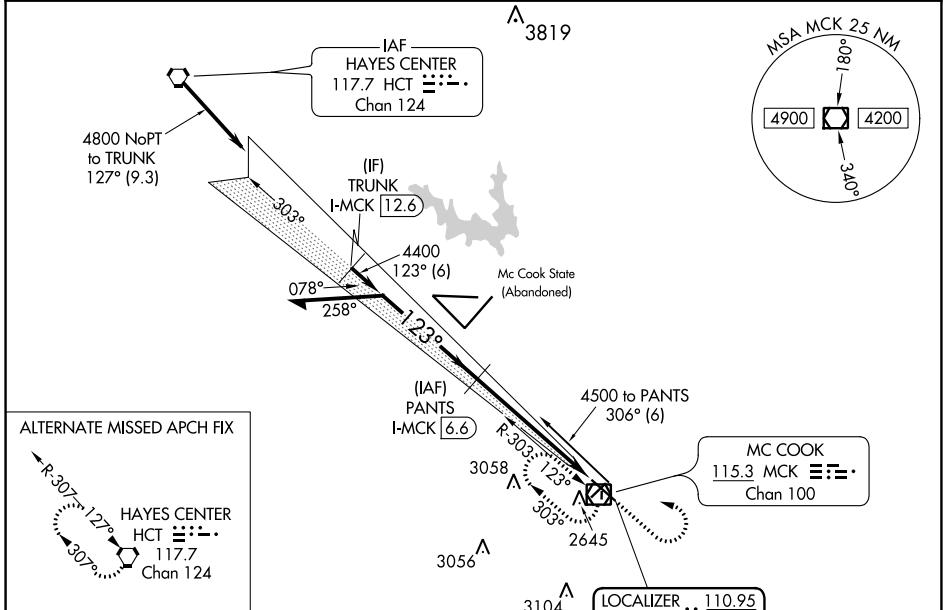
# ILS or LOC/DME RWY 12

MC COOK BEN NELSON RGNL (MCK)

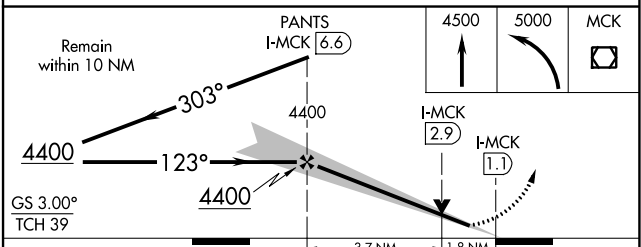
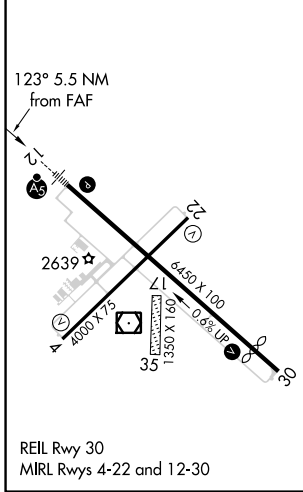
**⚠** Circling NA to Rwys 17 and 35. When local altimeter setting not received, use Imperial Muni altimeter setting and increase DA 213 feet and S-ILS 12 all visibilities ½ mile; increase all MDAs 220 feet and S-LOC 12 and Circling visibilities Cats A and B ¼ mile, Cat C 1 mile. VDP NA when using Imperial Muni altimeter setting. For inoperative MALSR, when using Imperial Muni altimeter setting increase S-ILS 12 all visibilities to 1½, and S-LOC 12 Cat A visibility to 1.

**MALSR**  
  
**MISSED APPROACH:**  
Climb to 4500 then climbing left turn to 5000 direct MCK VOR/DME and hold.

ASOS <b>119.025</b>	DENVER CENTER <b>132.7 226.675</b>	UNICOM <b>122.8 (CTAF)</b> 
------------------------	---------------------------------------	---



ELEV 2583	<b>D</b>	TDZE 2583
-----------	----------	-----------



CATEGORY	A	B	C	D
S-ILS 12	2783-½ 200 (200-½)			NA
S-LOC 12	3180-½	597 (600-½)	3180-1 597 (600-1)	NA
CIRCLING	3180-1	597 (600-1)	3180-1½ 597 (600-1½)	NA

NC-2, 25 FEB 2021 to 25 MAR 2021

NC-2, 25 FEB 2021 to 25 MAR 2021