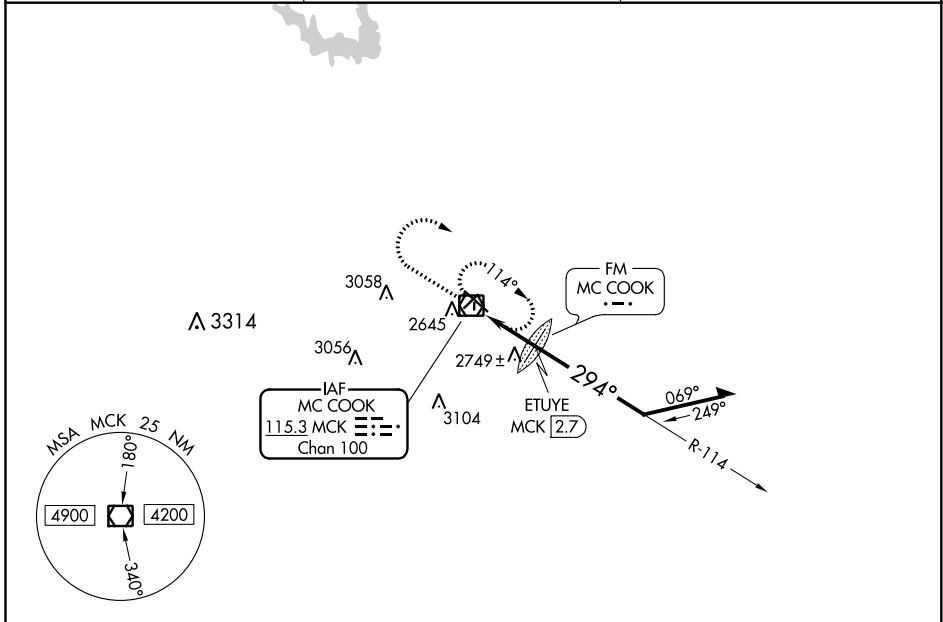


VOR/DME MCK <b>115.3</b> Chan 100	APP CRS <b>294°</b>	Rwy Idg TDZE Apt Elev <b>5698</b> <b>2558</b> <b>2583</b>
---	------------------------	--

# VOR RWY 30

MC COOK BEN NELSON RGNL (MCK)

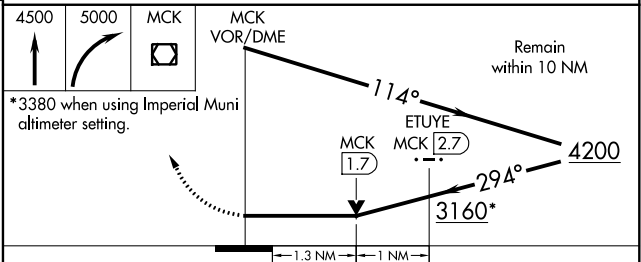
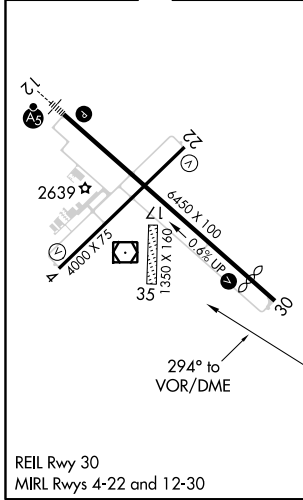
<p><b>⚠</b> VDP NA when using Imperial Muni altimeter setting. When local altimeter setting not received, use Imperial Muni altimeter setting and increase all MDA 220 feet, and Cat B visibility ¼ mile, Cat C ¾ and ETUYE fix minimums Cat C ½ mile. Circling NA to Rwys 17 and 35.</p>	<p>MISSED APPROACH: Climb to 4500 then climbing right turn to 5000 direct MCK VOR/DME and hold.</p>	
ASOS <b>119.025</b>	DENVER CENTER <b>132.7 226.675</b>	UNICOM <b>122.8 (CTAF) 0</b>



NC-2, 25 FEB 2021 to 25 MAR 2021

NC-2, 25 FEB 2021 to 25 MAR 2021

ELEV 2583	<b>D</b>	TDZE 2558
-----------	----------	-----------



CATEGORY	A	B	C	D
S-30	3160-1	602 (600-1)	3160-1¾ 602 (600-1¾)	NA
CIRCLING	3160-1	577 (600-1)	3160-1¾ 577 (600-1¾)	NA
ETUYE FIX MINIMUMS (DME or FM REQUIRED)				
S-30	3000-1	442 (500-1)	3000-1¾ 442 (500-1¾)	NA
CIRCLING	3020-1 437 (500-1)	3040-1 457 (500-1)	3040-1½ 457 (500-1½)	NA