

WAAS CH 72923 W25A	APP CRS 248°	Rwy Idg TDZE Apt Elev	5571 2800 2805
--	------------------------	-----------------------------	---

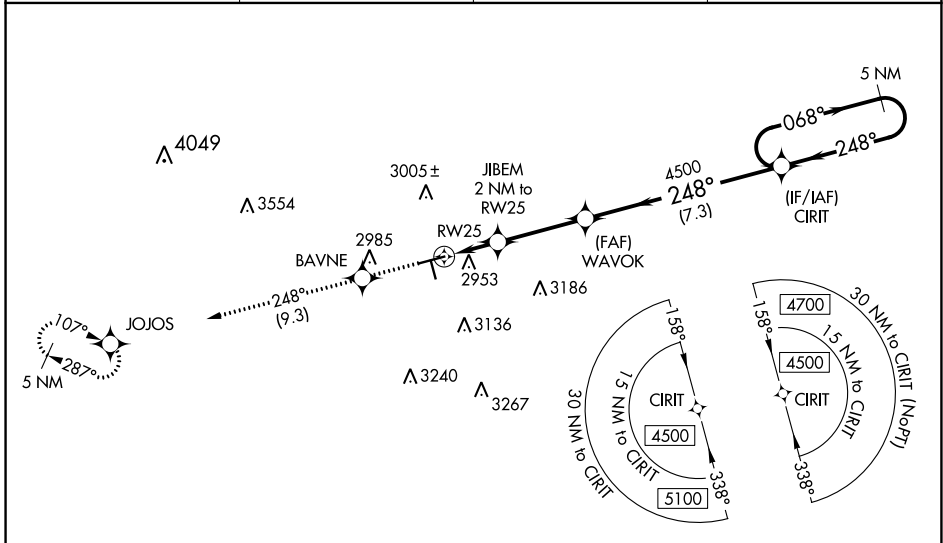
RNAV (GPS) RWY 25

MIDLAND AIRPARK (MDD)

⚠ Baro-VNAV NA when using Midland Intl Air and Space Port altimeter setting.
⚠ For uncompensated Baro-VNAV systems, LNAV/VNAV NA below -20°C (-4°F) or above 26°C (78°F). When local altimeter setting not received, use Midland Intl Air and Space Port altimeter setting and increase all DA 28 feet, all MDA 40 feet, increase LNAV/VNAV all Cats and LNAV Cat C/D visibility 1/8 mile. When VGSi inop, Straight-in/Circling Rwy 25 procedure NA at night. DME/DME RNP-0.3 NA. Helicopter visibility reduction below 1 SM NA.

MISSED APPROACH: Climb to 5000 direct BAVNE and on 248° track to JOJOS and hold.

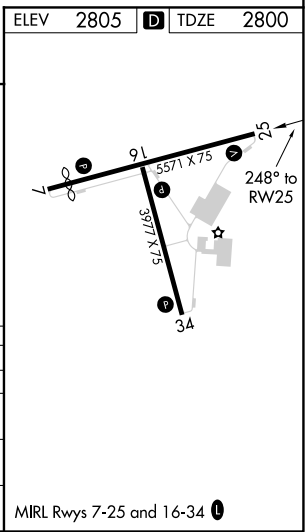
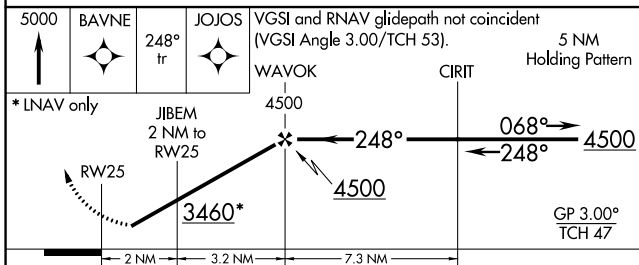
AWOS-3 118.125	MIDLAND APP CON * 124.6 290.4	CLNC DEL 121.8	UNICOM 122.7 (CTAF) 0
--------------------------	---	--------------------------	---------------------------------



SC-3, 25 FEB 2021 to 25 MAR 2021

SC-3, 25 FEB 2021 to 25 MAR 2021

ELEV 2805	TDZE 2800
-----------	-----------



CATEGORY	A	B	C	D
LPV DA	3081-1 281 (300-1)			
LNAV/VNAV DA	3144-1 1/8 344 (400-1 1/8)			
LNAV MDA	3220-1	420 (500-1)	3220-1 1/4	420 (500-1 1/4)
CIRCLING	3320-1	515 (600-1)	3320-1 1/2	3700-3 895 (900-3)

MIRL Rwy 7-25 and 16-34 0