

LOC I-MDH 110.9	APP CRS 182°	Rwy Idg 6506 TDZE 407 Apt Elev 411
---------------------------	------------------------	---------------------------------------------------

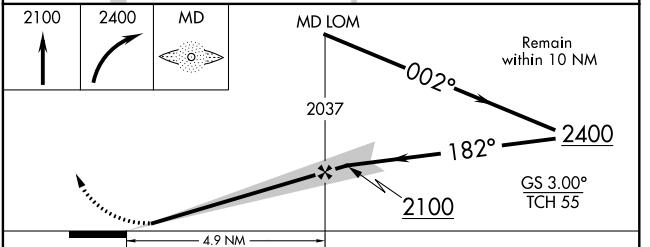
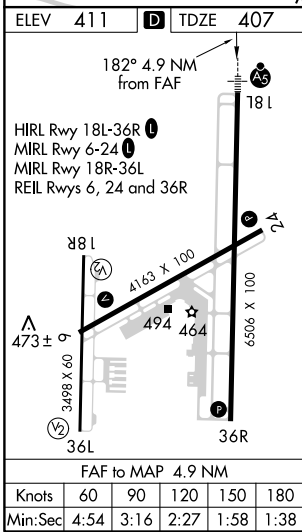
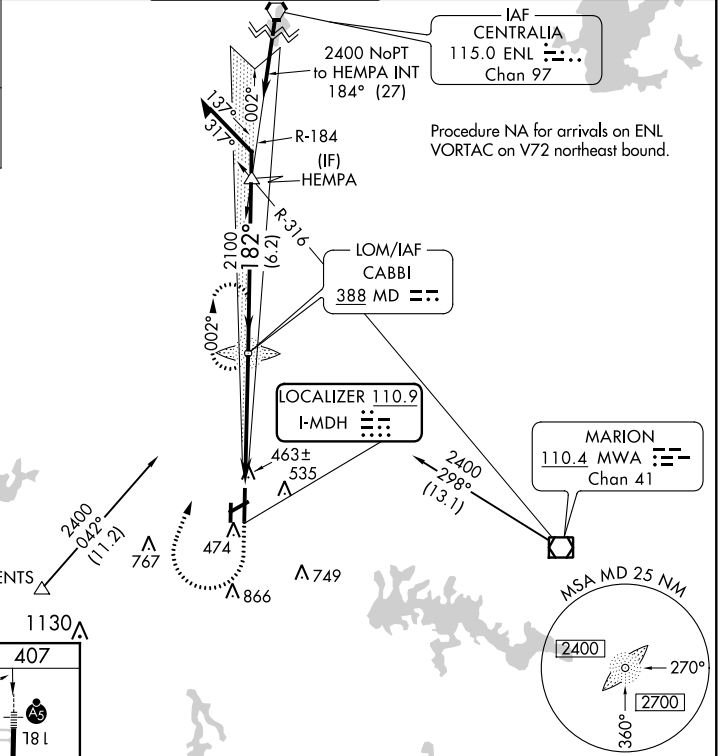
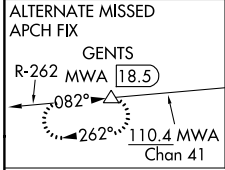
ILS or LOC RWY 18L

SOUTHERN ILLINOIS (MDH)

ADF Required. When local altimeter setting not received, use Williamson Co Rgnl altimeter setting and increase DA 36 feet and all MDA 40 feet.
NA For inoperative MALSR, increase S-LOC 18L Cat D visibility to 1 mile.

MALSR MISSED APPROACH: Climb to 2100 then climbing right turn to 2400 direct CABBI LOM and hold.

ATIS 119.725	KANSAS CITY CENTER 127.475 346.275	CARBONDALE TOWER ★ 125.35 (CTAF) 0 322.4	GND CON 121.8	UNICOM 122.95
------------------------	----------------------------------------------	----------------------------------------------------	-------------------------	-------------------------



CATEGORY	A	B	C	D
S-ILS 18L	607-½ 200 (200-½)			
S-LOC 18L	720-½ 313 (400-½)		720-¾ 313 (400-¾)	
CIRCLING	900-1 489 (500-1)		900-1½ 980-2 489 (500-1½) 569 (600-2)	

EC-3, 25 FEB 2021 to 25 MAR 2021

EC-3, 25 FEB 2021 to 25 MAR 2021