

APP CRS	Rwy Idg	<b>6506</b>
<b>182°</b>	TDZE	<b>407</b>
	Apt Elev	<b>411</b>

# RNAV (GPS) RWY 18L

SOUTHERN ILLINOIS (MDH)

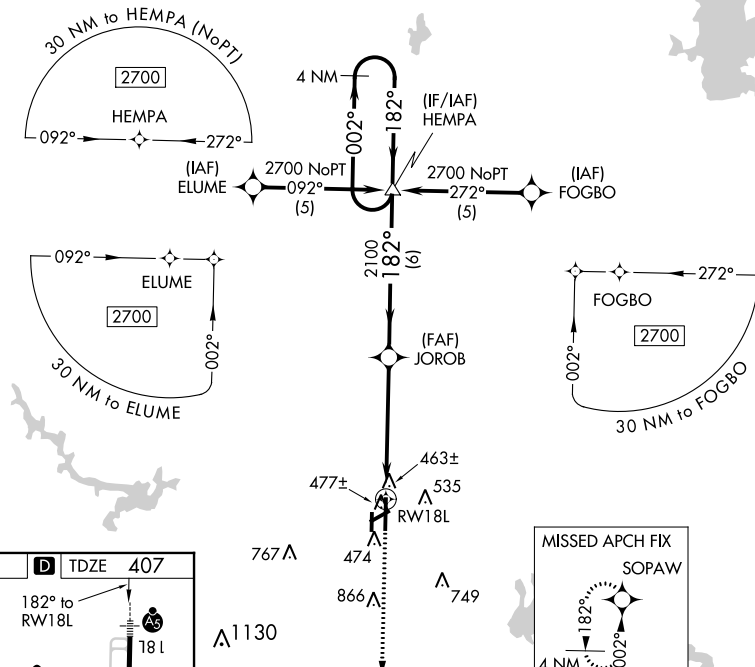
**▼** Inoperative table does not apply to LNAV Cat D. For uncompensated Baro-VNAV systems, LNAV/VNAV NA below -15°C (5°F) or above 48°C (118°F)

**▲** DME/DME RNP-0.3 NA. When local altimeter setting not received, use Williamson Co Rgnl altimeter setting and increase all DA 36 feet and all MDA 40 feet and increase LNAV/VNAV Cat A, B, C visibility ¼ mile. For inoperative MALSRS, increase LNAV/VNAV Cat D visibility to 1 mile. Baro-VNAV NA when using Williamson Co Rgnl altimeter setting. VDP NA when using Williamson Co Rgnl altimeter setting. For inoperative MALSRS when using Williamson Co Rgnl altimeter setting, increase LNAV Cat D visibility to 1¼ mile.



**MISSED APPROACH:**  
Climb to 2700 direct SOPAW and hold.

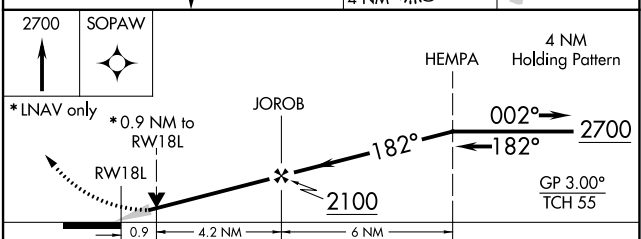
ATIS <b>119.725</b>	KANSAS CITY CENTER <b>127.475 346.275</b>	CARBONDALE TOWER ★ <b>125.35 (CTAF) 0 322.4</b>	GND CON <b>121.8</b>	UNICOM <b>122.95</b>
------------------------	--	--	-------------------------	-------------------------



ELEV 411 **D** TDZE 407

182° to RWY 18L

HIRL Rwy 18L-36R  
MIRL Rwy 6-24  
MIRL Rwy 18R-36L  
REIL Rws 6, 24 and 36R



CATEGORY	A	B	C	D
LNAV/VNAV DA	726-½ 319 (400-½)			726-¾ 319 (400-¾)
LNAV MDA	740-½ 333 (400-½)			740-1 333 (400-1)
CIRCLING	900-1 489 (500-1)		900-1½ 489 (500-1½)	980-2 569 (600-2)

EC-3, 25 FEB 2021 to 25 MAR 2021

EC-3, 25 FEB 2021 to 25 MAR 2021