

APP CRS	Rwy Idg	6506
002°	TDZE	407
	Apt Elev	411

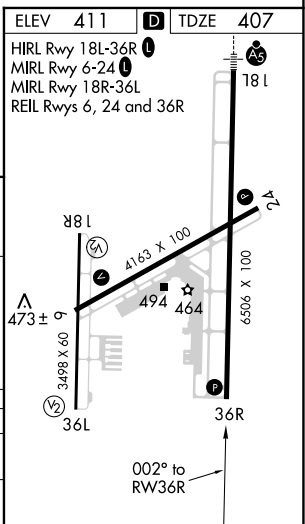
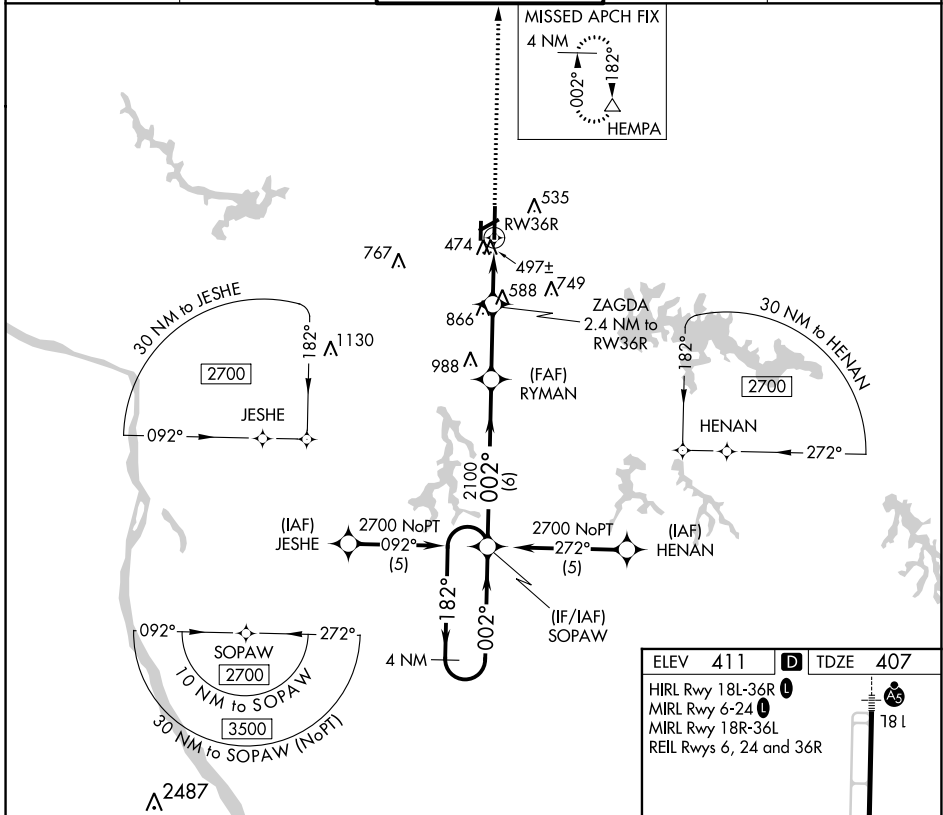
RNAV (GPS) RWY 36R

SOUTHERN ILLINOIS (MDH)

⚠ DME/DME RNP-0.3 NA. Visibility reduction by helicopters NA. When local altimeter setting not received, use Williamson Co Rgnl altimeter setting and increase all MDA 40 feet.
⚠ VDP NA when using Williamson Co Rgnl altimeter setting.

MISSED APPROACH:
 Climb to 2700 direct HEMPA and hold.

ATIS 119.725	KANSAS CITY CENTER 127.475 346.275	CARBONDALE TOWER ★ 125.35 (CTAF) 322.4	GND CON 121.8	UNICOM 122.95
------------------------	--	--	-------------------------	-------------------------



4 NM Holding Pattern	VGSI and descent angles not coincident (VGSI Angle 4.00/TCH 6°)		2700	HEMPA
2700 ← 182°	002° →	002°	2100	1200
SOPAW		RYMAN	ZAGDA	RW36R
6 NM		2.7 NM	1.7 NM	0.7 NM
3.04° TCH 55		2.4 NM to RW36R	0.7 NM to RW36R	

CATEGORY	A	B	C	D
LNVA MDA	760-1 353 (400-1)			760-1¼ 353 (400-1¼)
CIRCLING	900-1	489 (500-1)	900-1½ 489 (500-1½)	980-2 569 (600-2)

EC-3, 25 FEB 2021 to 25 MAR 2021

EC-3, 25 FEB 2021 to 25 MAR 2021