

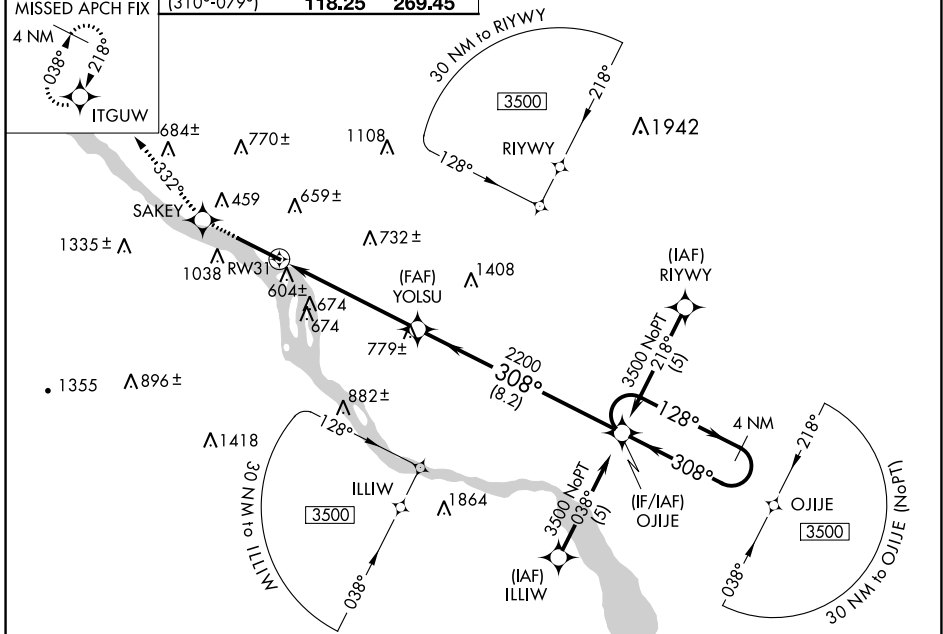
WAAS CH <b>78013</b> <b>W31A</b>	APP CRS <b>308°</b>	Rwy Idg <b>8129</b> TDZE <b>308</b> Apt Elev <b>310</b>
--	------------------------	---

# RNAV (GPS) RWY 31

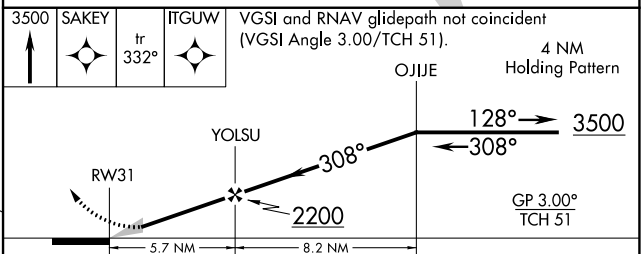
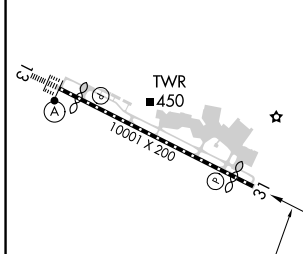
HARRISBURG INTL (MDT)

**⚠** Circling NA south of Rwy 13-31. For uncompensated Baro-VNAV systems, LNAV/VNAV NA below -15°C (5°F) or above 48°C (118°F).  
**⚠** MISSED APPROACH: Climb to 3500 direct SAKEY and via track 332° to ITGUW and hold.  
**⚠** -17°C  
 DME/DME RNP-0.3 NA.

ATIS <b>118.8</b>	HARRISBURG APP CON (080°-179°) <b>126.45 281.525</b> (180°-309°) <b>124.1 273.525</b> (310°-079°) <b>118.25 269.45</b>	HARRISBURG INTL TOWER <b>124.8 269.35</b>	GND CON <b>121.7 348.6</b>
----------------------	---	--	-------------------------------



ELEV 310	<b>D</b>	TDZE 308
----------	----------	----------



CATEGORY	A	B	C	D
LPV DA		558/50	250 (300-1)	
LNAV/VNAV DA		921-2¼	613 (700-2¼)	
LNAV MDA	1100/50 792 (800-1)	1100/60 792 (800-1¼)	1100-2¼ 792 (800-2¼)	1100-2½ 792 (800-2½)
CIRCLING	1100-1 790 (800-1)	1100-1¼ 790 (800-1¼)	1100-2¼ 790 (800-2¼)	1100-2½ 790 (800-2½)

NE-4, 25 FEB 2021 to 25 MAR 2021

NE-4, 25 FEB 2021 to 25 MAR 2021