

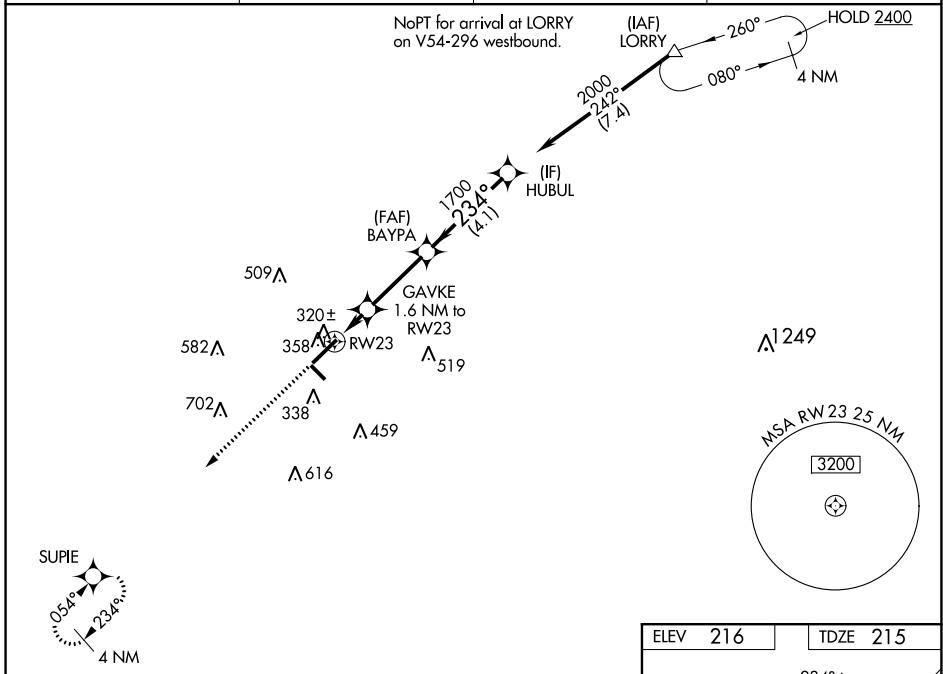
WAAS CH 61023 W23A	APP CRS 234°	Rwy Idg TDZE Apt Elev	6315 215 216
----------------------------------------	------------------------	-----------------------------	-----------------------------------------

RNAV (GPS) RWY 23

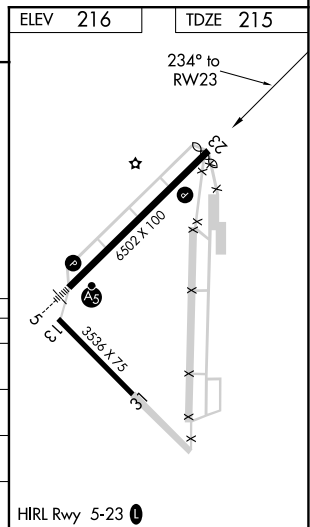
Laurinburg-Maxton (MEB)

RNP APCH.		MISSED APPROACH: Climb to 2000 direct SUPIE and hold.	
<p>⚠ Circling to Rwy 13 and 31 NA at night. Rwy 23 helicopter visibility reduction below 3/4 SM NA. For uncompensated Baro-VNAV systems, procedure NA below -11°C or above 54°C.</p>			

ASOS 134.125	FAYETTEVILLE APP CON 127.8 343.725	GCO 135.075	UNICOM 122.8 (CTAF) 0
------------------------	----------------------------------------------	-----------------------	---------------------------------



2000	SUPIE				
*LNAV only.	GAVKE 1.6 NM to RW23	BAYPA 1700	HUBUL 2000		
RW23	*1.1 NM to RW23	*760	1700	234°	2000
					GP 3.00° TCH 38
	1.1 NM	0.5 NM	3 NM	4.1 NM	
CATEGORY	A	B	C	D	
LPV DA		476-7/8	261 (300-7/8)		
LNAV/VNAV DA		481-7/8	266 (300-7/8)		
LNAV MDA		580-1	365 (400-1)		
C CIRCLING	740-1	524 (600-1)	780-1 1/2 564 (600-1 1/2)	1020-2 1/2 804 (900-2 1/2)	



SE-2, 25 FEB 2021 to 25 MAR 2021

SE-2, 25 FEB 2021 to 25 MAR 2021