

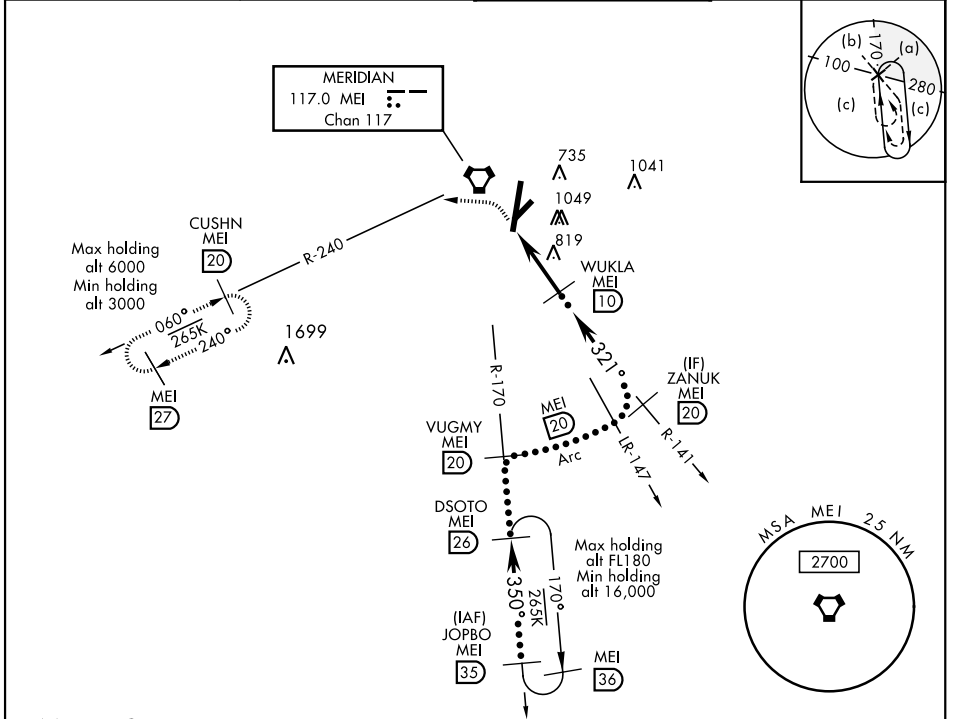
HI-TACAN or VOR-B

VORTAC MEI 117.0 Chan 117	APCH CRS 321°	Rwy Idg TDZE Arpt Elev N/A N/A 298	JAL-254 [USAF]	KEY FIELD (KMEI)
---	-------------------------	---	----------------	------------------

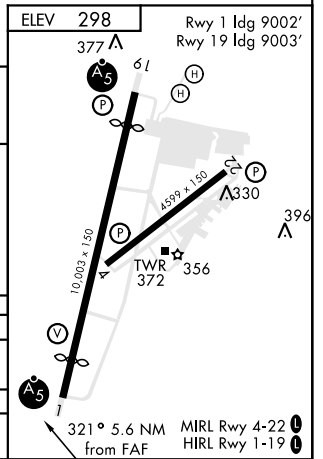
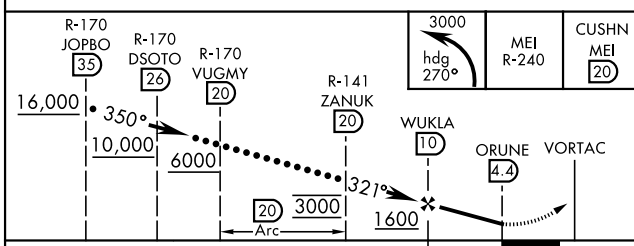
*** Circling to Rwy 22 NA at night. Circling NA SE of Rws 1 and 22.**

MISSED APPROACH: Climbing left turn to 3000 on heading 270° and MEI VORTAC R-240 to CUSHN/ MEI 20 DME and hold.

ATIS 126.475 291.675	MERIDIAN APP CON 120.5 269.325	KEY TOWER ★ 133.975 (CTAF) 0 257.8	GND CON 121.9 348.6
--------------------------------	--	--	-------------------------------



DME REQUIRED
EMERG SAFE ALT 100 NM 3700



CATEGORY	C	D	E
CIRCLING*	1140-2½ 842 (900-2½)	1140-2¾ 842 (900-2¾)	1140-3 842 (900-3)
HATTIESBURG-LAUREL RGNL ALTIMETER SETTING			
CIRCLING*	1280-3	982	(1000-3)

HI-TACAN or VOR-B

SC-4, 25 FEB 2021 to 25 MAR 2021

SC-4, 25 FEB 2021 to 25 MAR 2021