


WAAS CH 86500 W01A	APP CRS 011°	Rwy Idg 9013 TDZE 289 Apt Elev 298
--	------------------------	---

RNAV (GPS) RWY 1

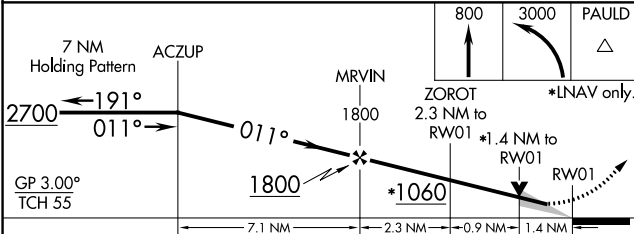
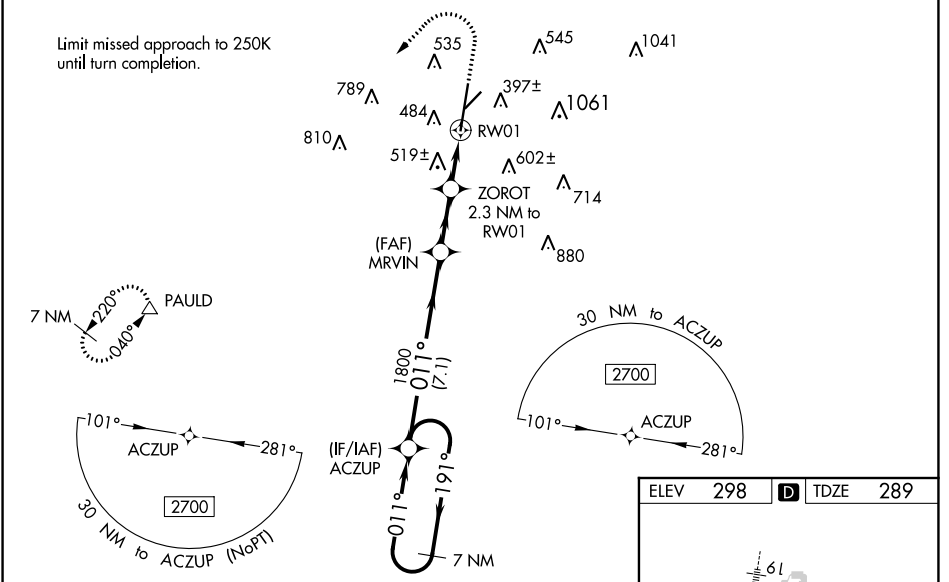
KEY FIELD (MEI)

⚠ For uncompensated Baro-VNAV systems, LNAV/VNAV NA below -8°C (18°F) or above 54°C (130°F). Circling NA southeast of Rwy 1 and 22. DME/DME RNP-0.3 NA.

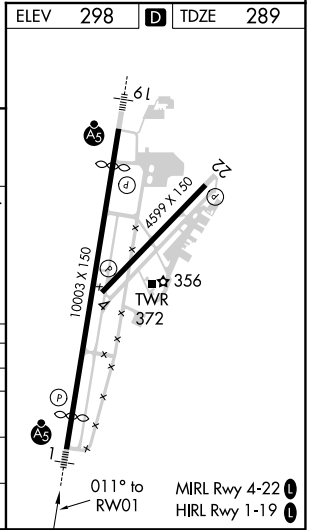
⚠ When local altimeter setting not received, use Hattiesburg-Laurel Rgnl altimeter setting and increase all DA 138 feet and all MDA 140 feet, LPV all Cats visibility to RVR 3100, LNAV/VNAV all Cats and LNAV Cats C, D, and E visibilities to 1³/₈ mile, and Circling Cat C visibility 1/2 mile and Cat D visibility 1/4 mile. For inop MALSAR increase LPV Cat E to RVR 4000, LNAV/VNAV Cat E visibility to RVR 6000, and LNAV Cat E visibility to 1³/₈ mile. For inop MALSAR when using Hattiesburg-Laurel Rgnl altimeter setting, increase LPV all Cats visibility to RVR 5000, LNAV/VNAV Cat E visibility to 1³/₈ mile, and LNAV Cat E visibility to 1³/₄ mile. VDP and Baro-VNAV NA when using Hattiesburg-Laurel Rgnl altimeter setting. Night landing: Rwy 22 NA. ** RVR 1800 authorized with use of FD or AP or HUD to DA, NA when using Hattiesburg-Laurel Rgnl altimeter setting.

MALSAR
 MISSED APPROACH: Climb to 800 then climbing left turn to 3000 direct PAULD and hold.

ATIS 126.475 291.675	MERIDIAN APP CON * 120.5 269.325	KEY TOWER * 133.975 (CTAF) 257.8	GND CON 121.9 348.6	CLNC DEL 121.9 348.6	UNICOM 122.95
--------------------------------	--	--	-------------------------------	--------------------------------	-------------------------



CATEGORY	A	B	C	D	E
LPV DA **	489/24		200 (200-1/2)		
LNAV/VNAV DA	709/47		420 (500-1)		
LNAV MDA	780/24	491 (500-1/2)	780/50		491 (500-1)
C CIRCLING	860-1 562 (600-1)	880-1 582 (600-1)	960-1 ³ / ₄ 662 (700-1 ³ / ₄)	1120-2 ³ / ₄ 822 (900-2 ³ / ₄)	1120-3 822 (900-3)



SC-4, 25 FEB 2021 to 25 MAR 2021

SC-4, 25 FEB 2021 to 25 MAR 2021