

MEADE, KANSAS

AL-6286 (FAA)

20142

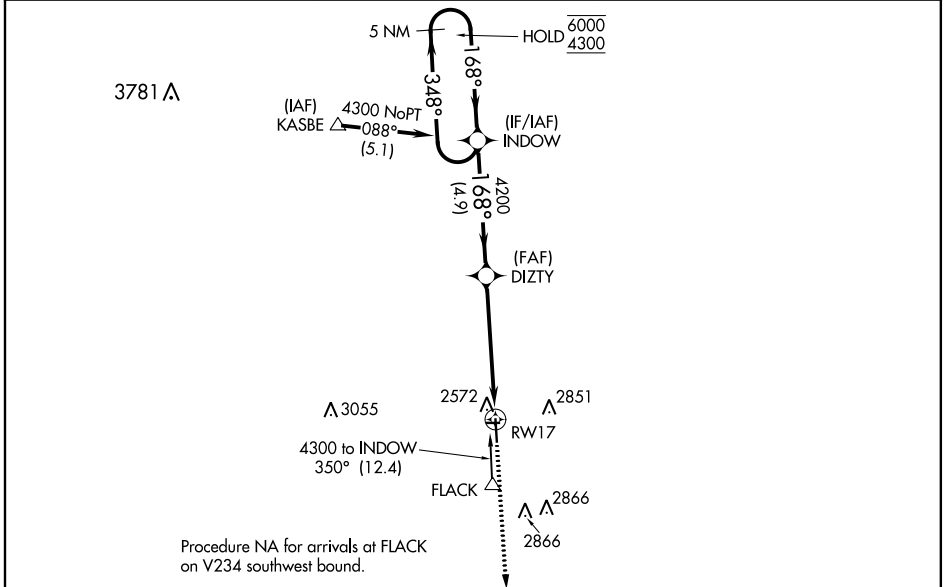
APP CRS	Rwy Idg	<b>4800</b>
<b>168°</b>	TDZE	<b>2518</b>
	Apt Elev	<b>2527</b>

# RNAV (GPS) RWY 17

MEADE MUNI (MEJ)

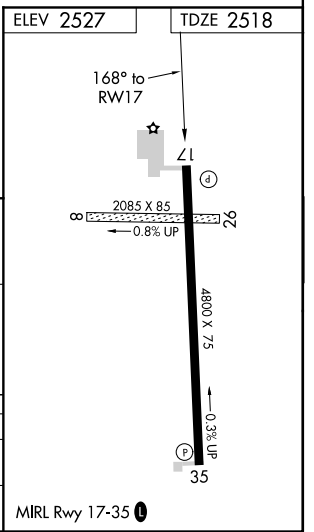
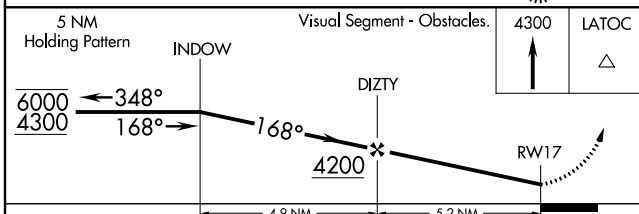
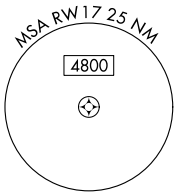
RNP APCH.	<p>▼ Circling NA to Rwy 8 and 26. Rwy 17 helicopter visibility reduction below 1 SM NA.</p> <p>▲ NA When local altimeter setting not received, use Liberal altimeter setting and increase all MDAs 140 feet.</p>	MISSED APPROACH: Climb to 4300 direct LATOC and hold.
-----------	--	---

AWOS-3 <b>119.425</b>	KANSAS CITY CENTER <b>134.0 257.625</b>	UNICOM <b>122.8 (CTAF) 0</b>
--------------------------	--	---------------------------------



NC-2, 25 FEB 2021 to 25 MAR 2021

NC-2, 25 FEB 2021 to 25 MAR 2021



CATEGORY	A	B	C	D
RNAV MDA	3100-1	582 (600-1)	NA	
CIRCLING	3100-1	573 (600-1)	NA	

MEADE, KANSAS  
Orig-B 28FEB19

37°17'N-100°21'W

# MEADE MUNI (MEJ) RNAV (GPS) RWY 17

MIRL Rwy 17-35 0