

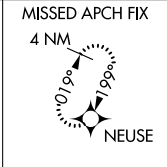
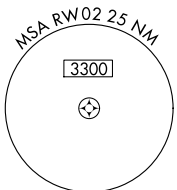
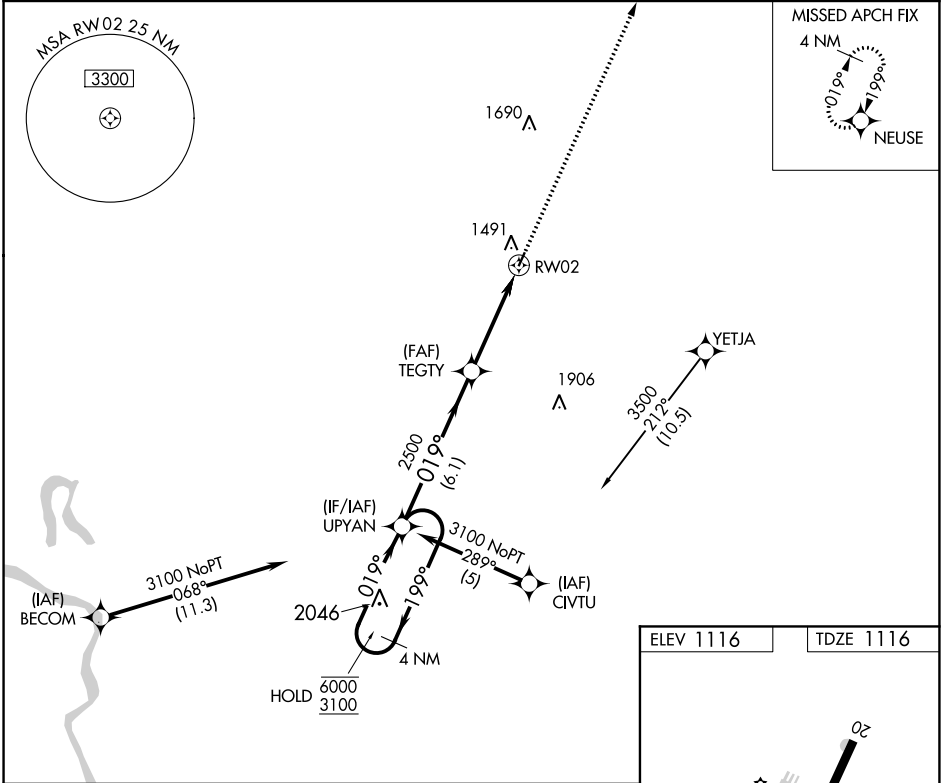
APP CRS	Rwy Idg	2801
019°	TDZE	1116
	Apt Elev	1116

RNAV (GPS) RWY 2

JAMES G WHITING MEMORIAL FIELD (MEY)

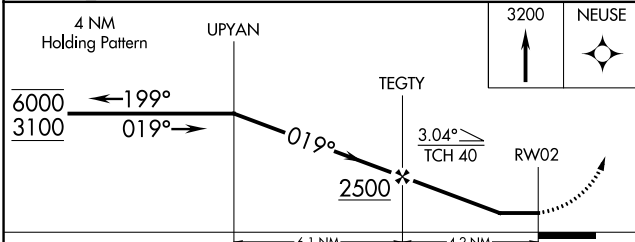
RNP APCH.	Use Sioux City altimeter setting, when not received use Denison altimeter setting. Procedure NA at night. Rwy 2 helicopter visibility reduction below 1 SM NA.	MISSED APPROACH: Climb to 3200 direct NEUSE and hold.
-----------	---	---

SUX ASOS 119.45	SIoux CITY APP CON★ 124.6 307.0	UNICOM 122.8 (CTAF) 0
---------------------------	---	---------------------------------

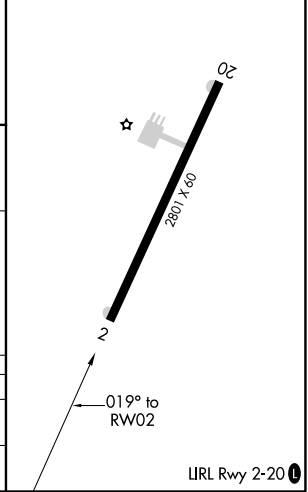


NC-3, 25 FEB 2021 to 25 MAR 2021

NC-3, 25 FEB 2021 to 25 MAR 2021



ELEV 1116	TDZE 1116
-----------	-----------



CATEGORY	A	B	C	D
LNVA MDA	1900-1 784 (800-1)	1900-1¼ 784 (800-1¼)		NA
CIRCLING	1900-1 784 (800-1)	1940-1¼ 824 (800-1¼)		NA