

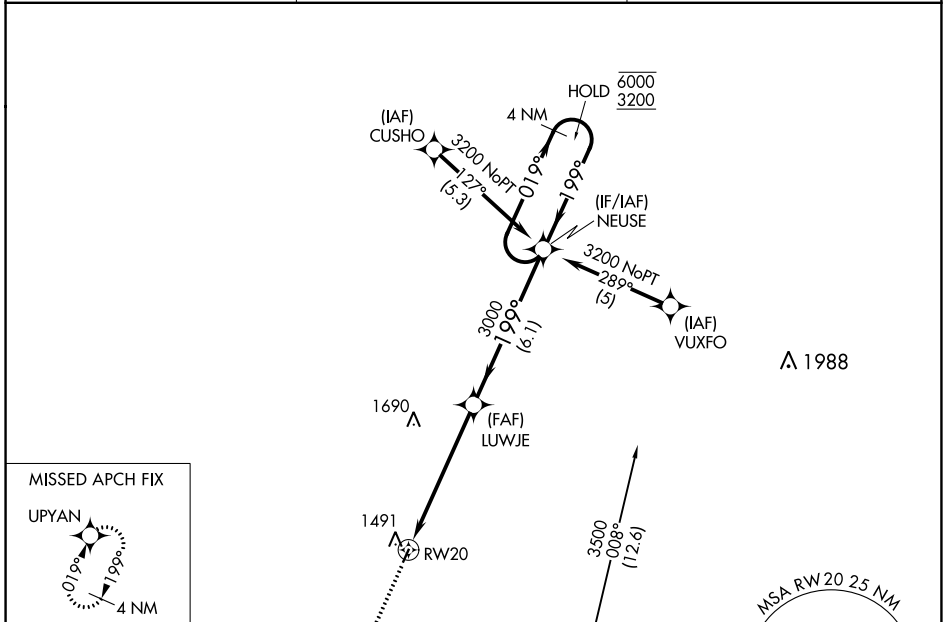
# RNAV (GPS) RWY 20

JAMES G WHITING MEMORIAL FIELD (MEY)

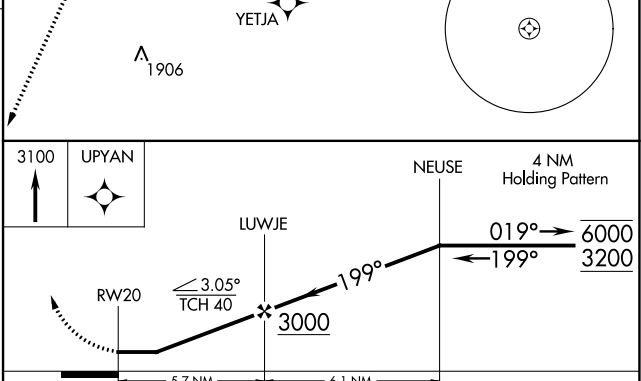
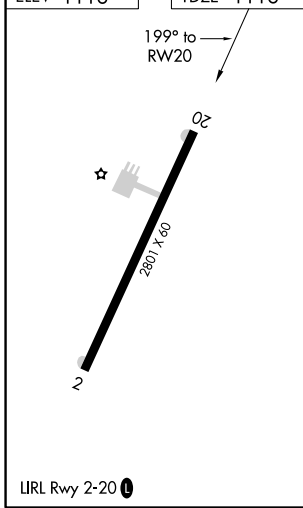
APP CRS	Rwy Idg	<b>2801</b>
<b>199°</b>	TDZE	<b>1116</b>
	Apt Elev	<b>1116</b>

RNP APCH.	MISSED APPROACH: Climb to 3100 direct UPYAN and hold.
<p>Procedure NA at night. Rwy 20 helicopter visibility reduction below 1 SM NA.</p> <p>Use Sioux City altimeter setting, when not received use Denison altimeter setting.</p>	

SUX ASOS <b>119.45</b>	SIoux CITY APP CON★ <b>124.6 307.0</b>	UNICOM <b>122.8 (CTAF) 0</b>
---------------------------	---	---------------------------------



ELEV 1116	TDZE 1116
-----------	-----------



CATEGORY	A	B	C	D
LNNAV MDA	1920-1 804 (900-1)	1920-1¼ 804 (900-1¼)	NA	
CIRCLING	1920-1 804 (900-1)	1940-1¼ 824 (900-1¼)	NA	

NC-3, 25 FEB 2021 to 25 MAR 2021

NC-3, 25 FEB 2021 to 25 MAR 2021