

WAAS CH 78400 W14A	APP CRS 137°	Rwy Idg 6983 TDZE 107 Apt Elev 107
--	------------------------	---

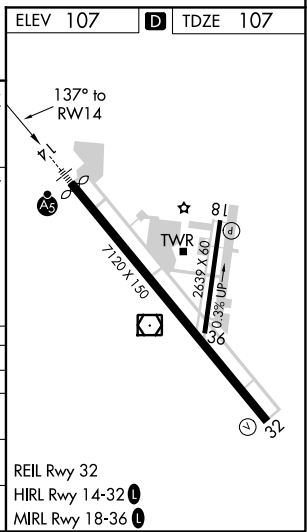
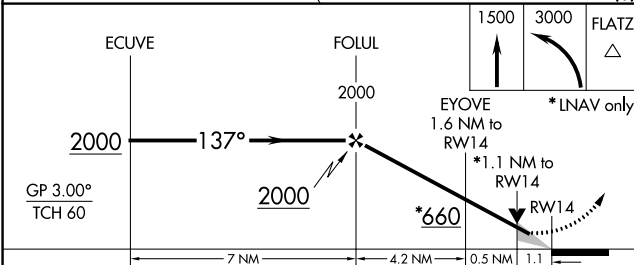
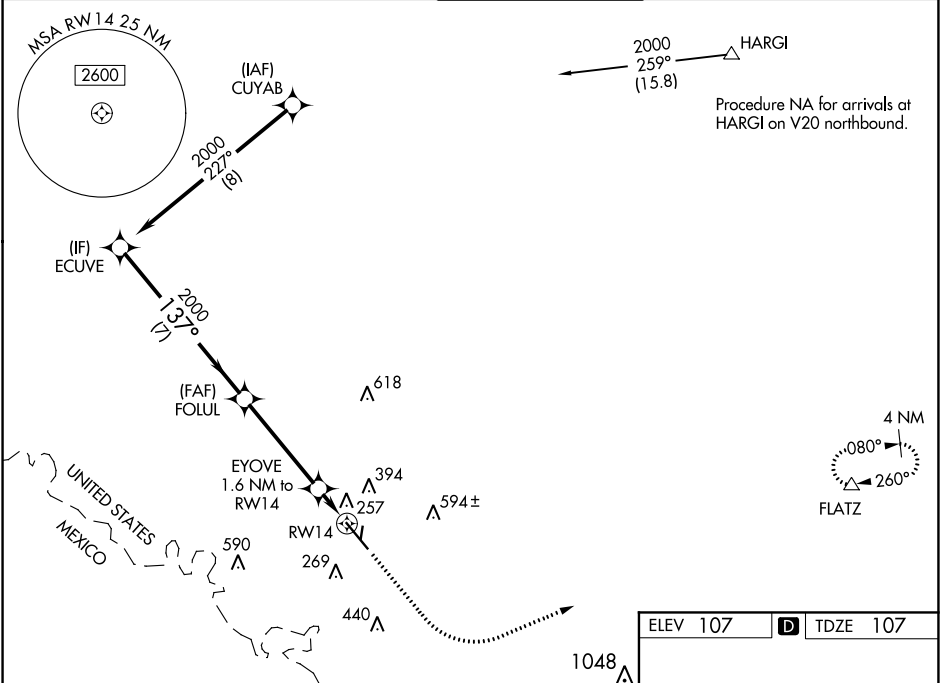
RNAV (GPS) RWY 14

MC ALLEN MILLER INTL (MFE)

⚠ For uncompensated Baro-VNAV systems, LNAV/VNAV NA below 1°C (34°F) or above 54°C (130°F). Circling NA northeast of Rwy 14-32. DME/DME RNP-0.3 NA. When local altimeter setting not received, use Weslaco altimeter setting: increase all DA 39 feet and LNAV/VNAV all Cat visibility 1/8 mile; increase all MDA 40 feet and LNAV Cat C/D visibility 1/8 mile. Baro-VNAV and VDP NA when using Weslaco altimeter setting.

MALSRL
AS
MISSED APPROACH:
Climb to 1500 then
climbing left turn to 3000
direct FLATZ and hold.

ATIS 128.5	VALLEY APP CON 121.0 377.2	MC ALLEN TOWER * 118.5 (CTAF) 256.9	GND CON 121.8	UNICOM 122.95
----------------------	--------------------------------------	---	-------------------------	-------------------------



CATEGORY	A	B	C	D
LPV DA		307-1/2	200 (200-1/2)	
LNAV/VNAV DA		418-1/2	311 (400-1/2)	
LNAV MDA	520-1/2	413 (500-1/2)	520-3/4	413 (500-3/4)
C CIRCLING	580-1	473 (500-1)	580-1 1/2 473 (500-1 1/2)	800-2 1/4 693 (700-2 1/4)

SC-3, 25 FEB 2021 to 25 MAR 2021

SC-3, 25 FEB 2021 to 25 MAR 2021