

WAAS CH 58101 W34A	APP CRS 339°	Rwy Idg TDZE 1258 Apt Elev 1278	5002
--	------------------------	---	-------------

RNAV (GPS) RWY 34

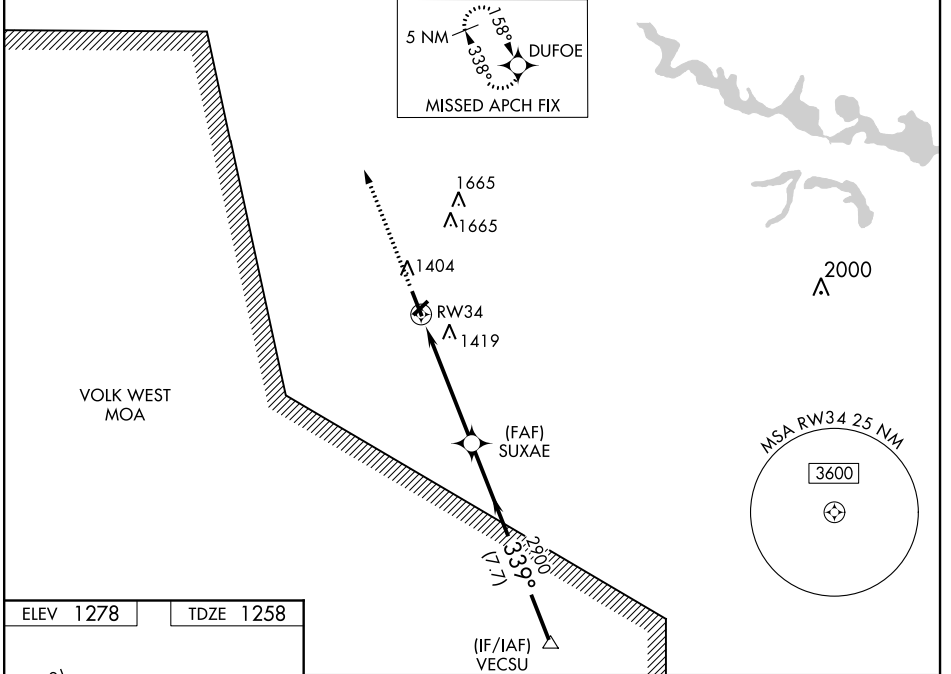
MARSHFIELD MUNI (MFI)

For inoperative MALSR increase LPV all Cats visibility to 1, increase LNAV Cats A and B to 1 and Cat D to 1/4. If local altimeter setting not received, use Central Wisconsin altimeter setting and increase all DAs/MDAs 60 feet. VDP and Baro-VNAV NA when using Central Wisconsin altimeter setting. For uncompensated Baro-VNAV systems, LNAV/VNAV NA below -17° C (2° F) or above 46° C (115° F). DME/DME RNP-0.3 NA.

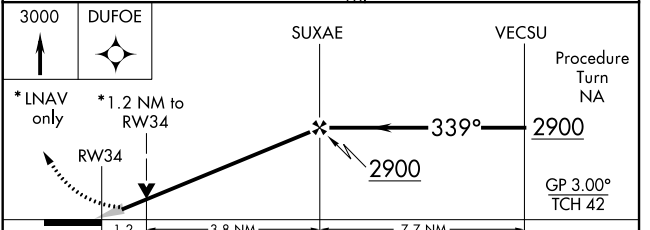
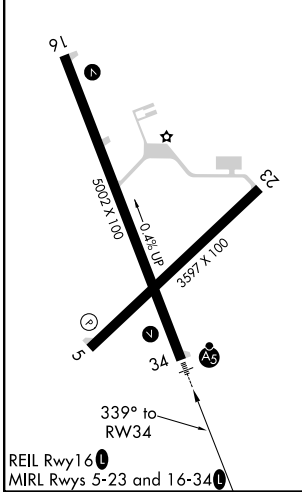


MISSED APPROACH: Climb to 3000 direct DUFOE and hold.

ASOS 121.575	MINNEAPOLIS CENTER 124.4 317.7	UNICOM 123.0 (CTAF)
------------------------	--	-------------------------------



ELEV 1278	TDZE 1258
-----------	-----------



CATEGORY	A	B	C	D
LPV DA	1508-3/4		250 (300-3/4)	
LNAV/VNAV DA	1718-1/4		460 (500-1/4)	
LNAV MDA	1680-3/4		422 (500-3/4)	
			1680-1 422 (500-1)	
CIRCLING	1760-1 3/4		2020-2 1/2	
	482 (500-1 3/4)		742 (800-2 1/4)	
			2020-2 1/2 742 (800-2 1/2)	

EC-3, 25 FEB 2021 to 25 MAR 2021

EC-3, 25 FEB 2021 to 25 MAR 2021