

APP CRS	Rwy Idg	<b>8800</b>
<b>323°</b>	TDZE	<b>1335</b>
	Apt Elev	<b>1335</b>

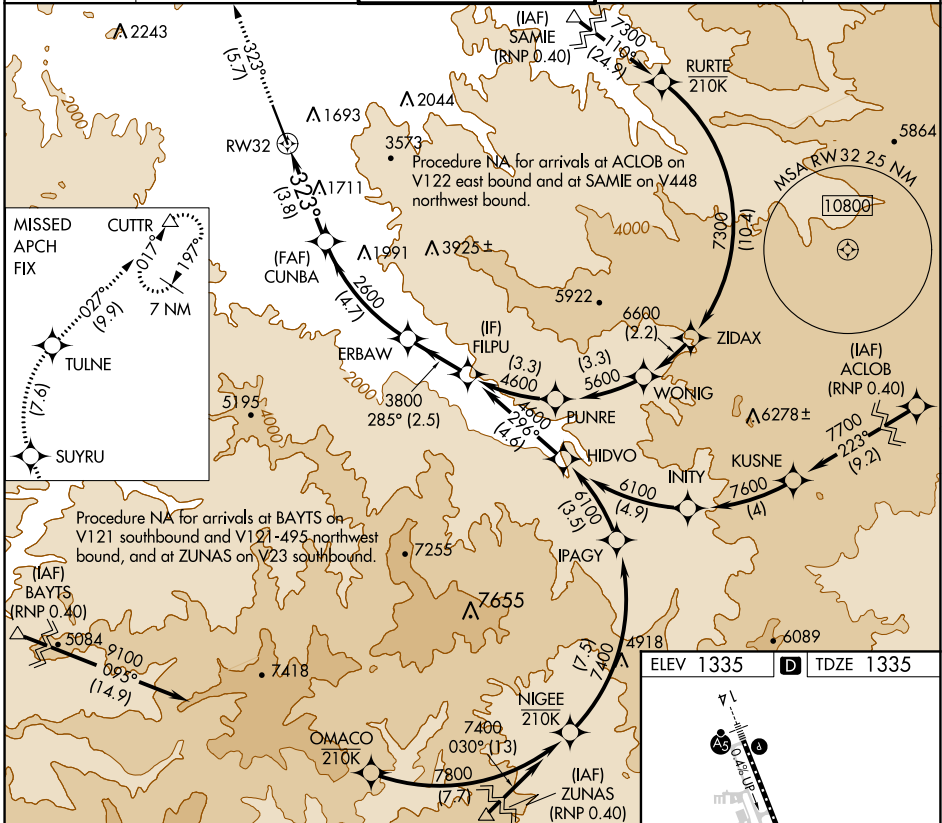
# RNAV (RNP) RWY 32

## ROGUE VALLEY INTL-MEDFORD (MFR)

**GPS required. RF required.** For uncompensated Baro-VNAV systems, procedure NA below -8°C (17°F) or above 45°C (113°F).

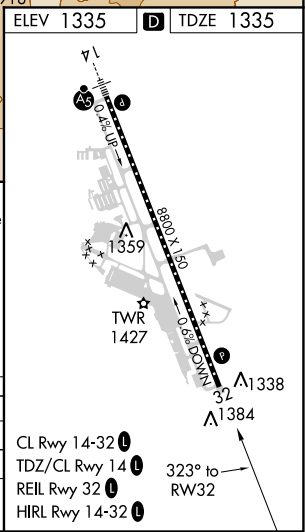
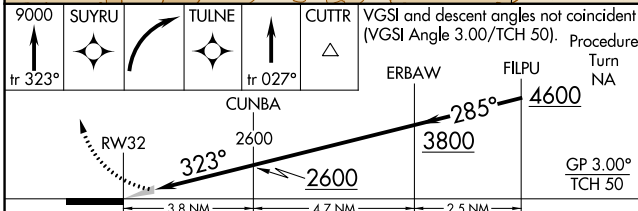
**MISSED APPROACH:** Climb to 9000 on track 323° to SUYRU, right turn to TULNE, then on track 027° to CUTTR and hold, continue climb-in-hold to 9000.

ATIS <b>127.25</b>	CASCADE APP CON * <b>124.3 379.9</b>	MEDFORD TOWER * <b>119.4 (CTAF) 0 257.8</b>	GND CON <b>121.8</b>	UNICOM <b>122.95</b>
-----------------------	---	--	-------------------------	-------------------------



NW-1, 25 FEB 2021 to 25 MAR 2021

NW-1, 25 FEB 2021 to 25 MAR 2021



9000	SUYRU	TULNE	CUTTR	VGSI and descent angles not coincident (VGSI Angle 3.00/TCH 50). Procedure Turn NA
tr 323°				
	CUNBA	ERBAW	FILPU	
	2600	285°	4600	
		3800		GP 3.00° TCH 50
	3.8 NM	4.7 NM	2.5 NM	
CATEGORY	A	B	C	D
RNP 0.15 DA		1609-1	274 (300-1)	
RNP 0.30 DA		1661-1	326 (400-1)	

**AUTHORIZATION REQUIRED**