

APP CRS	Rwy Idg	8800
143°	TDZE	1303
	Apt Elev	1335


RNAV (GPS) Y RWY 14

ROGUE VALLEY INTL-MEDFORD (MFR)

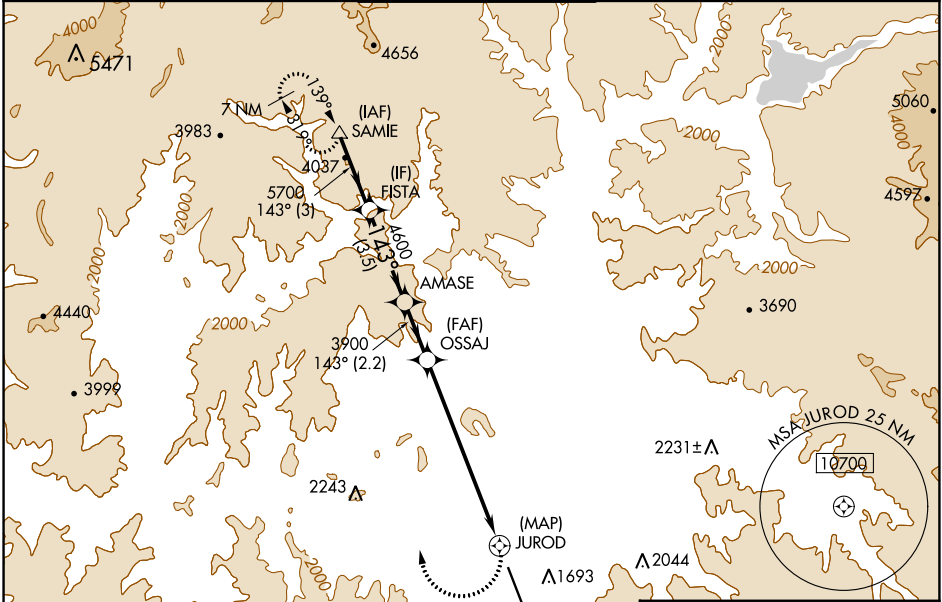
RNP APCH.

⚠ When Medford altimeter setting not received, procedure N.A. Inop table does not apply to Cats C and D.

⚠ -3°C

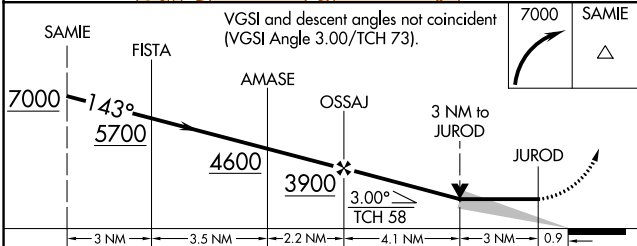
MALS  MISSED APPROACH: Climbing right turn 7000 direct SAMIE and hold, continue climb-in-hold to 7000.
*Missed approach requires minimum climb of 334 feet per NM to 4800.

ATIS 127.25	CASCADE APP CON * 124.3 379.9	MEDFORD TOWER * 119.4 (CTAF) 257.8	GND CON 121.8	UNICOM 122.95
-----------------------	---	--	-------------------------	-------------------------

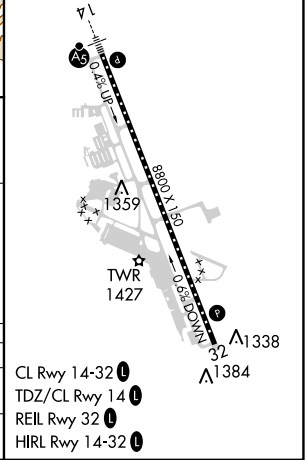


ELEV 1335 **D** TDZE 1303

7000 1711A 1991A 2231±A 2243A 2660±A 3573 • 3980 3999 4440 4494 4656 497 • 5060 5700 (3) 143° (3) 4037 (IAF) SAMIE (IF) FISTA 4600 (M) AMASE (FAF) OSSAJ (MAP) JUROD 1693A 2044A



ELEV 1335 **D** TDZE 1303



CATEGORY	A	B	C	D
LNAV MDA*	2600/40 1297 (1300-¾)	2600/55 1297 (1300-1)	2600-3 1297 (1300-3)	
LNAV MDA	2600/40 1297 (1300-¾)	2600/55 1297 (1300-1)	3320-3 2017 (2000-3)	3460-3 2157 (2200-3)

CL Rwy 14-32 **⓪**
TDZ/CL Rwy 14 **⓪**
REIL Rwy 32 **⓪**
HIRL Rwy 14-32 **⓪**

NW-1, 25 FEB 2021 to 25 MAR 2021

NW-1, 25 FEB 2021 to 25 MAR 2021