

VORTAC OED <b>113.6</b> Chan <b>83</b>	APP CRS <b>146°</b>	Rwy Idg TDZE Apt Elev <b>8800</b> <b>1303</b> <b>1335</b>
--	------------------------	--

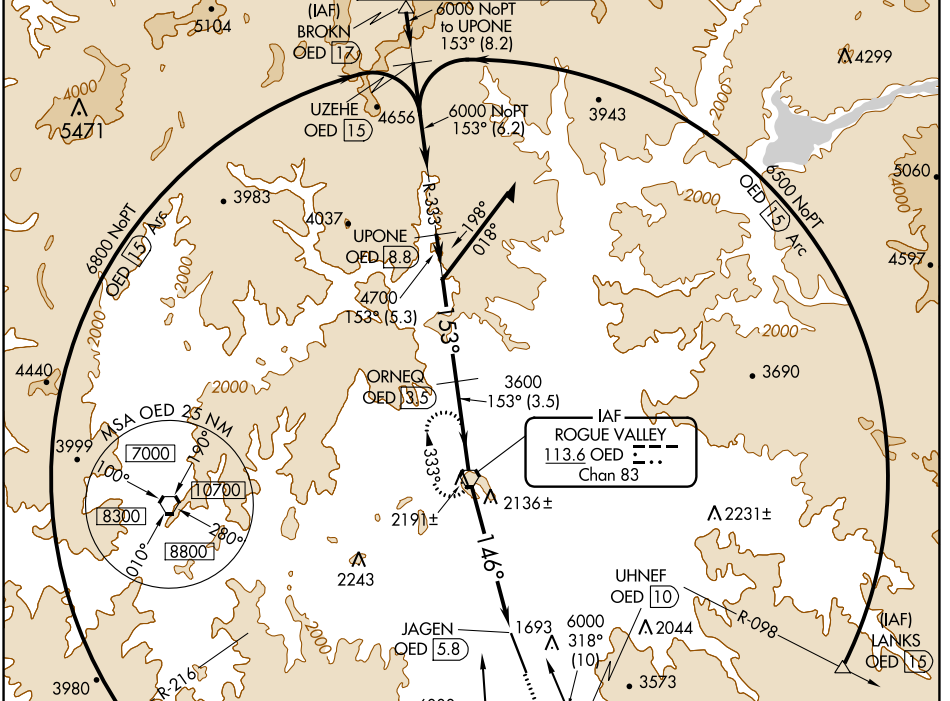
# VOR/DME RWY 14

ROGUE VALLEY INTL-MEDFORD (MFR)

**⚠** Inoperative table does not apply to S-14 Cat A.  
**❄** For inoperative MALSR increase S-14 Cat B visibility to 1½.  
**⚠** -3°C

**MALSR** MISSED APPROACH: Climb to 2900 then climbing right turn to 6400 direct OED VORTAC and hold, continue climb-in-hold to 6400.

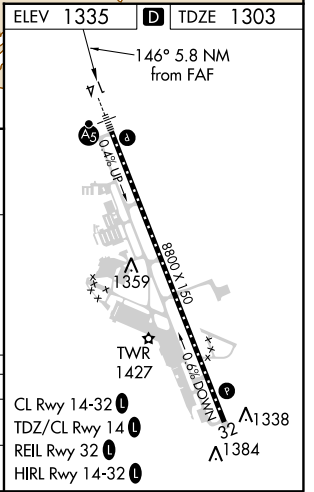
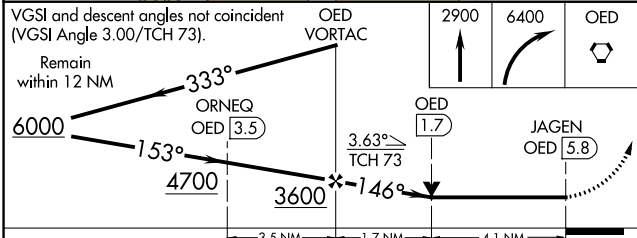
ATIS <b>127.25</b>	CASCADE APP CON * <b>124.3 379.9</b>	MEDFORD TOWER * <b>119.4 (CTAF) 0 257.8</b>	GND CON <b>121.8</b>	UNICOM <b>122.95</b>
-----------------------	---	--	-------------------------	-------------------------



NW-1, 25 FEB 2021 to 25 MAR 2021

NW-1, 25 FEB 2021 to 25 MAR 2021

ELEV 1335	TDZE 1303
-----------	-----------



CATEGORY	A	B	C	D
S-14	2680/60	1377 (1400-1½)	2680-2½	1377 (1400-2½)
CIRCLING	2680-1¼ 1345 (1400-1¼)	2680-1½ 1345 (1400-1½)	2680-3	1345 (1400-3)