

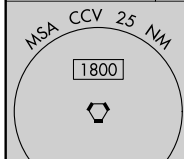
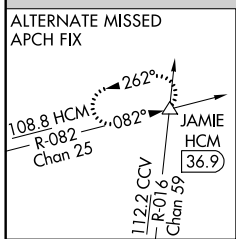
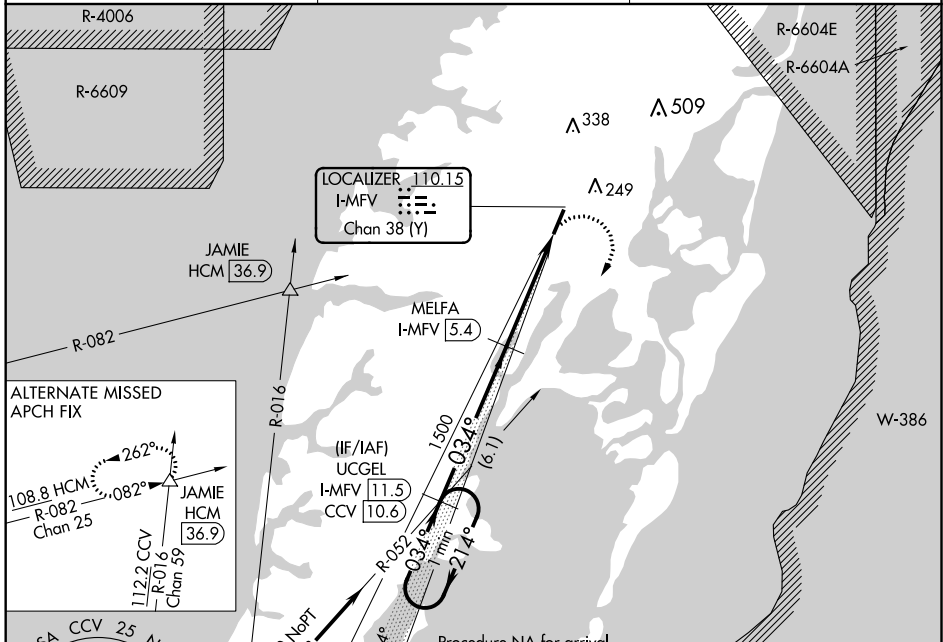
LOC/DME I-MFV 110.15 Chan 38 (Y)	APP CRS 034°	Rwy ldg TDZE 47 Apt Elev 48
--	------------------------	---

LOC RWY 3
ACCOMACK COUNTY (MFV)

DME required.

MISSED APPROACH: Climbing right turn to 2000 on heading 220° and CCV VORTAC R-052 to UCGEL/CCV 10.6 DME and hold.

AWOS-3 118.175	PATUXENT APP CON * 127.95 314.0	UNICOM 122.8 (CTAF) 0
--------------------------	---	--



Procedure NA for arrival on CCV VORTAC airway radials 016 CW 041.

IAF CAPE CHARLES 112.2 CCV Chan 59

2000 No hpt (110.6)

IF/IAF UCGEL I-MFV 11.5 CCV 10.6

MELFA I-MFV 5.4

JAMIE HCM 36.9

R-082

R-016

R-052

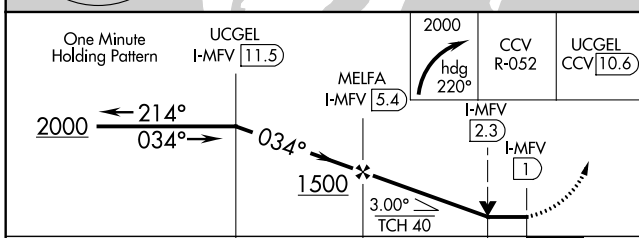
1500

1034°

1034°

214°

214°



CATEGORY	A	B	C	D
S-3	500-1	453 (500-1)	500-1 ³ / ₈	453 (500-1 ³ / ₈)
CIRCLING	500-1 452 (500-1)	560-1 512 (600-1)	700-1 ³ / ₄ 652 (700-1 ³ / ₄)	700-2 652 (700-2)

ELEV 48 TDZE 47

MRL Rwy 3-21 126±

REIL Rws 3 and 21

FAF to MAP 4.4 NM

Knots	60	90	120	150	180
Min:Sec	4:24	2:56	2:12	1:46	1:28

NE-3, 25 FEB 2021 to 25 MAR 2021

NE-3, 25 FEB 2021 to 25 MAR 2021