

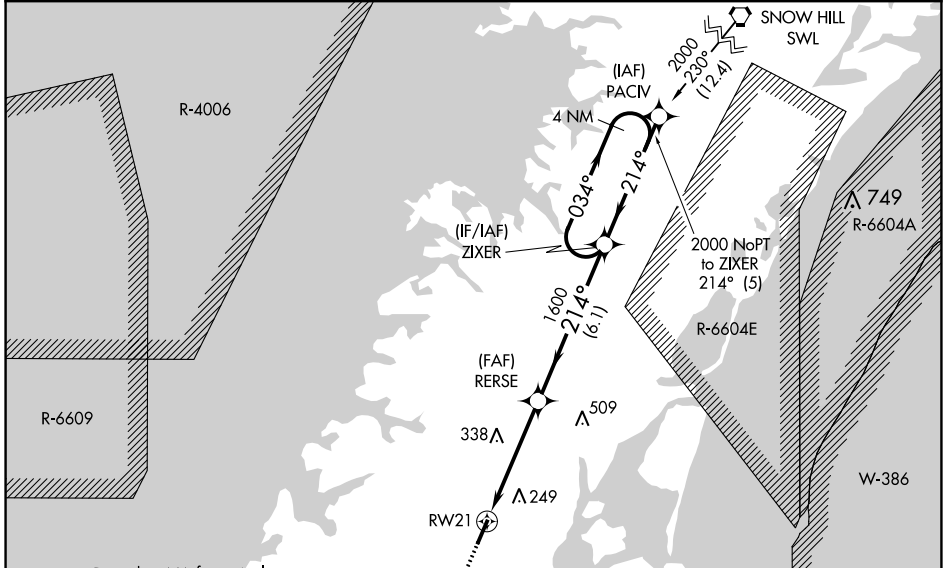
APP CRS 214°	Rwy Idg 5000
	TDZE 48
	Apt Elev 48

RNAV (GPS) RWY 21

ACCOMACK COUNTY (MFLV)

RNP APCH. ▼ Rwy 21 helicopter visibility reduction below 3/4 SM NA.	MISSED APPROACH: Climb to 2000 direct UCGEL and hold.
---	---

AWOS-3 118.175	PATUXENT APP CON* 127.95 314.0	UNICOM 122.8 (CTAF) 0
--------------------------	--	---------------------------------



Procedure NA for arrival on CCV VORTAC airway radials 323 CW 041.

CAPE CHARLES CCV

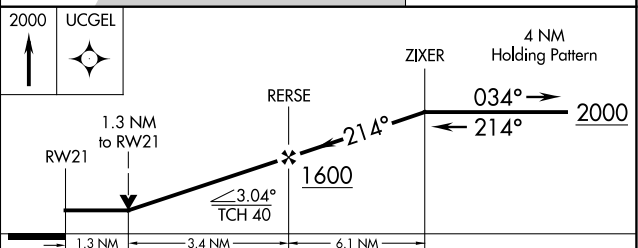
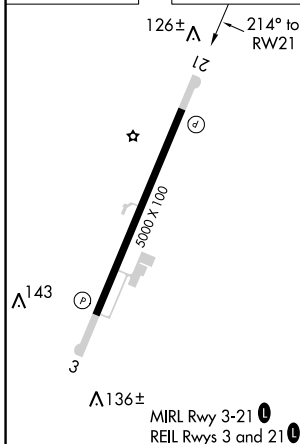
MSA RW 21 25 NM
1800

MISSED APCH FIX

UCGEL



ELEV 48	TDZE 48
---------	---------



CATEGORY	A	B	C	D
LNVA MDA	500-1	452 (500-1)	500-1 3/8	452 (500-1 3/8)
CIRCLING	500-1 452 (500-1)	560-1 512 (600-1)	700-1 3/4 652 (700-1 3/4)	700-2 652 (700-2)

NE-3, 25 FEB 2021 to 25 MAR 2021

NE-3, 25 FEB 2021 to 25 MAR 2021