

MELFA, VIRGINIA

AL-5598 (FAA)

19115

WAAS CH <b>42905</b> <b>W03A</b>	APP CRS <b>034°</b>	Rwy Idg <b>5000</b> TDZE <b>47</b> Apt Elev <b>48</b>
--	------------------------	---

# RNAV (GPS) RWY 3

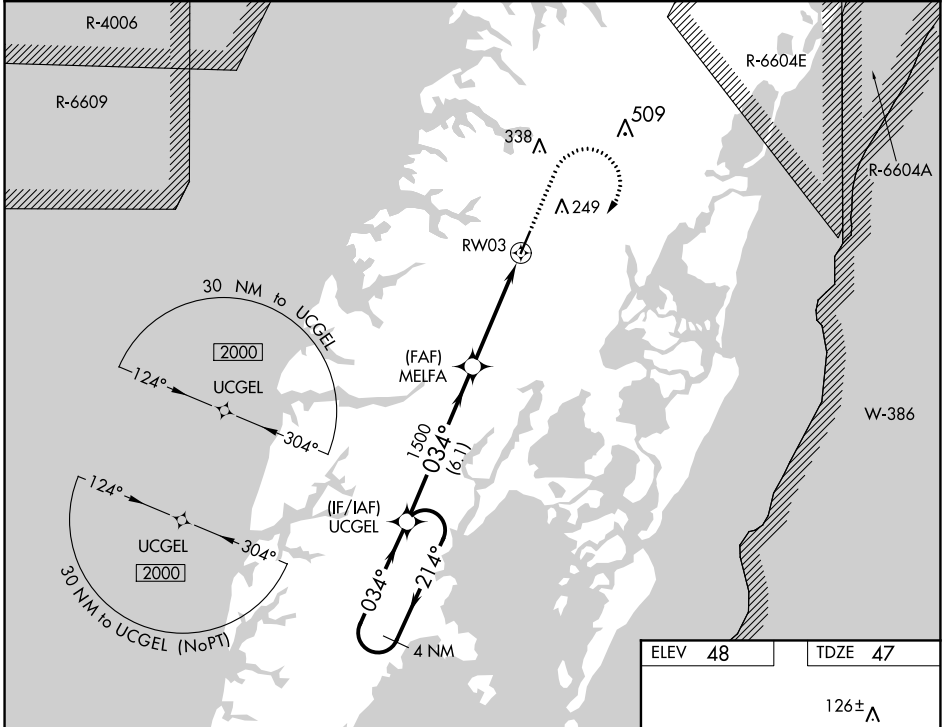
ACCOMACK COUNTY (MFV)

RNP APCH.

▼ For uncompensated Baro-VNAV systems, LNAV/VNAV NA below -15°C or above 54°C.

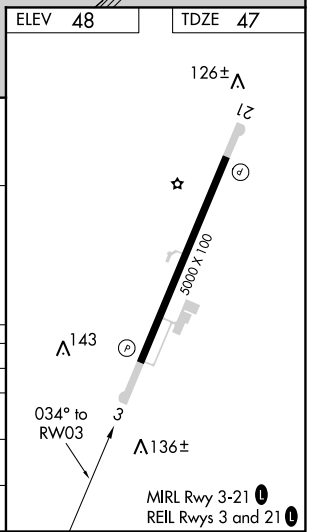
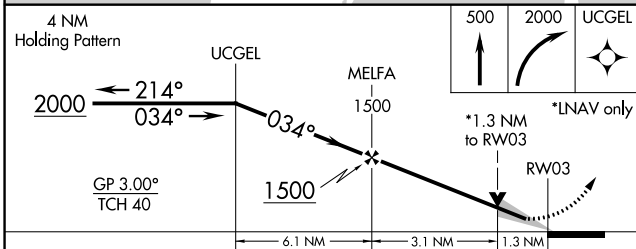
MISSED APPROACH: Climb to 500 then climbing right turn to 2000 direct UCGEL and hold.

AWOS-3 <b>118.175</b>	PATUXENT APP CON* <b>127.95 314.0</b>	UNICOM <b>122.8 (CTAF) 0</b>
--------------------------	--	---------------------------------



NE-3, 25 FEB 2021 to 25 MAR 2021

NE-3, 25 FEB 2021 to 25 MAR 2021



CATEGORY	A	B	C	D
LPV DA		297-1	250 (300-1)	
LNAV/VNAV DA		349-1	302 (400-1)	
LNAV MDA	500-1	453 (500-1)	500-1 $\frac{3}{4}$	453 (500-1 $\frac{3}{4}$ )
CIRCLING	500-1 452 (500-1)	560-1 512 (600-1)	700-1 $\frac{3}{4}$ 652 (700-1 $\frac{3}{4}$ )	700-2 652 (700-2)

MELFA, VIRGINIA  
Amdt 2A 06DEC18

37°39'N-75°46'W

# ACCOMACK COUNTY (MFV)

## RNAV (GPS) RWY 3