

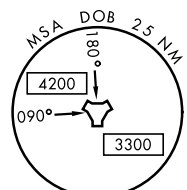
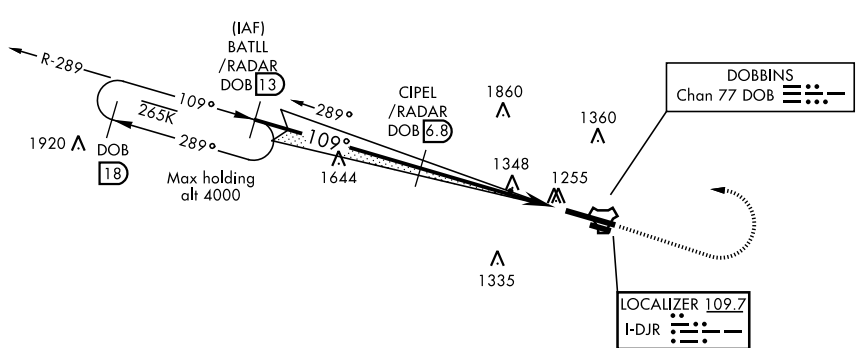
# ILS or LOC RWY 11

LOC I-DJR <b>109.7</b>	APCH CRS <b>109°</b>	Rwy ldg <b>10,002</b> TDZE <b>1069</b> Arprt Elev <b>1069</b>	AL-959 [USAF]	DOBBINS ARB (KMGE)
---------------------------	-------------------------	---	---------------	--------------------

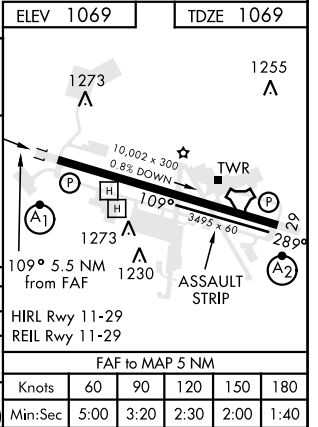
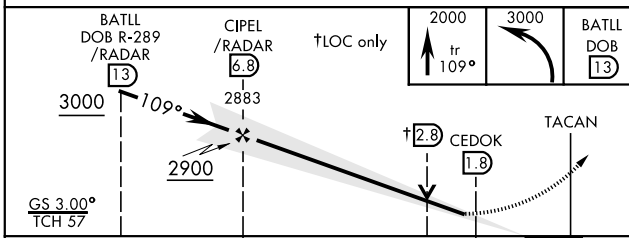
DME required.	ALSIF-1 	† MISSED APPROACH: Climb to 2000 track 109°, then climbing left turn to 3000, intercept the DOB TACAN R-289 to BATLL and hold.
* When ALS inop, increase RVR to 55 and vis to 1 mile. ** When ALS inop, increase CAT AB RVR to 55 and vis to 1 mile, CAT CDE vis to 1½ miles.		

ATIS ★ <b>269.5</b>	ATLANTA APP CON <b>121.0 268.7</b>	DOBBINS TOWER ★ <b>120.75 370.875</b>	GND CON <b>125.3 275.8</b>	ASR
------------------------	---------------------------------------	--	-------------------------------	-----

\*\*\* Circling not authorized N of Rwy 11-29 for CAT DE aircraft, Circling to assault strip not authorized. † Missed approach requires use of RNAV or ATC RADAR monitoring.



EMERG SAFE ALT 100 NM 7700



CATEGORY	A	B	C	D	E
S-ILS 11*	1401/40		332	(400-¾)	
S-LOC 11**	1600/40	531 (600-¾)	1600/55	531	(600-1)
*** CIRCLING	1660-1 591 (600-1)	1700-1¾ 631 (700-1¾)	1700-2 631 (700-2)	1700-2¼ 631 (700-2¼)	

Knots	60	90	120	150	180
Min:Sec	5:00	3:20	2:30	2:00	1:40

# ILS or LOC RWY 11

SE-4, 25 FEB 2021 to 25 MAR 2021

SE-4, 25 FEB 2021 to 25 MAR 2021