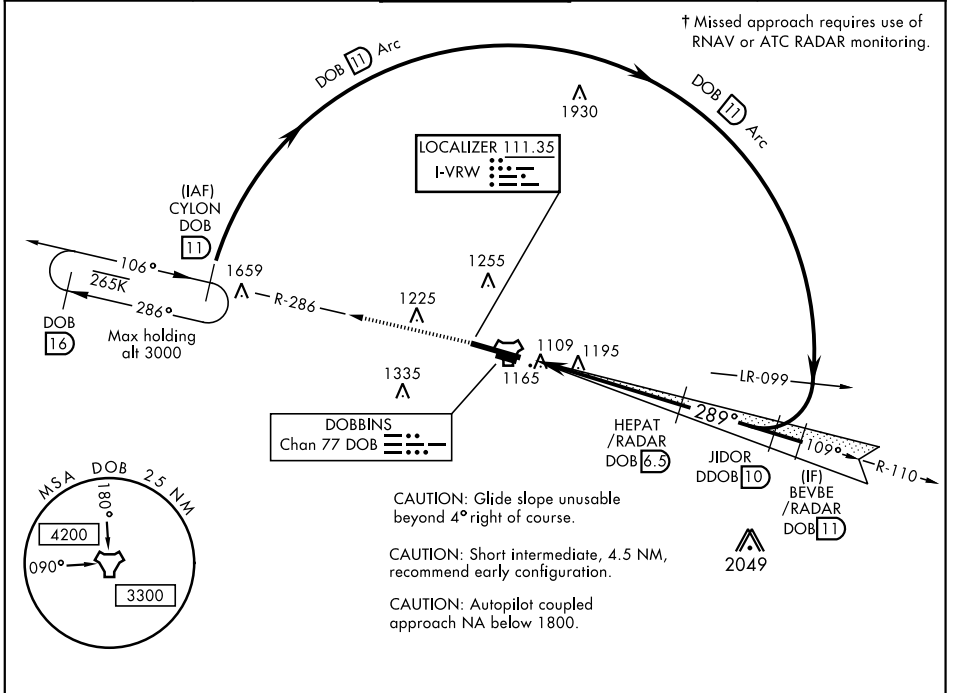


ILS or LOC RWY 29

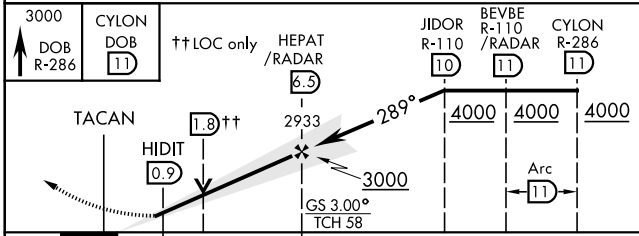
LOC I-RVW 111.35	APCH CRS 289°	Rwy Ldg TDZE Arprt Elev 10,002 1014 1069	AL-959 [USAF]	DOBBINS ARB (KMGE)
----------------------------	-------------------------	--	---------------	--------------------

DME required.	SALS A2	† MISSED APPROACH: Climb to 3000 via DOB TACAN R-286 to CYLON and hold.
▼ * When ALS inop, increase CAT AB RVR to 55 and vis to 1 mile, CAT CDE vis to 1 3/8 miles. ** Circling not authorized N of Rwy 11-29 for CAT DE aircraft. Circling to assault strip not authorized.		

ATIS ★ 269.5	ATLANTA APP CON 121.0 268.7	DOBBINS TOWER ★ 120.75 370.875	GND CON 125.3 275.8	ASR
------------------------	---------------------------------------	--	-------------------------------	-----



EMERG SAFE ALT 100 NM 7700



CATEGORY	A	B	C	D	E
S-ILS 29	1214/40		200	(200-3/4)	
S-LOC 29*	1500/40	486 (500-3/4)	1500/60	486	(500-1 1/2)
** CIRCLING	1660-1	591 (600-1)	1700-1 3/4 631 (700-1 3/4)	1700-2 631 (700-2)	1700-2 1/4 631 (700-2 1/4)

ELEV 1069	TDZE 1014
-----------	-----------

REIL Rwy 11-29
HIRL Rwy 11-29

FAF to MAP 5.5 NM

Knots	60	90	120	150	180
Min:Sec	5:30	3:40	2:45	2:12	1:50

ILS or LOC RWY 29

SE-4, 25 FEB 2021 to 25 MAR 2021

SE-4, 25 FEB 2021 to 25 MAR 2021