

MARIETTA, GEORGIA

# RNAV (GPS) RWY 11

APCH CRS <b>109°</b>	Rwy Idg TDZE Arpt Elev	<b>10,002</b> <b>1069</b> <b>1069</b>
-------------------------	------------------------------	---

AL-959 (USAF)

DOBBINS ARB (KMGE)

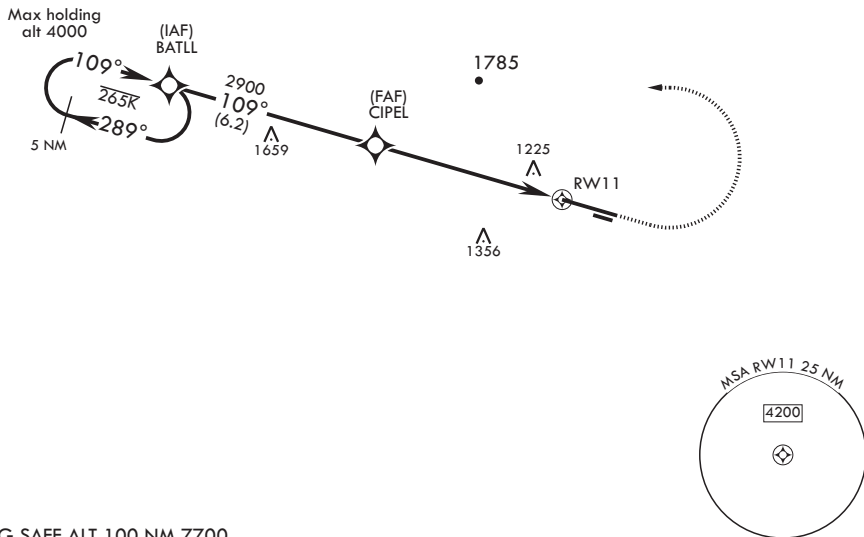
**▽** \* When ALS inop, increase CAT AB RVR to 55 and vis to 1 mile, CAT CDE vis to 1 1/2 miles.  
\*\* Circling NA N of Rwy 11-29 for CAT DE aircraft. Circling to assault strip not authorized.

**ALSF-1** **† MISSED APPROACH:** Climb to 2000 then climbing left turn to 3000 direct BATLL and hold.

ATIS <b>269.5</b>	ATLANTA APP CON/DEP CON <b>121.0 268.7</b>	TOWER <b>120.75 370.875</b>	GND CON <b>125.3 275.8</b>	ASR
----------------------	---	--------------------------------	-------------------------------	-----

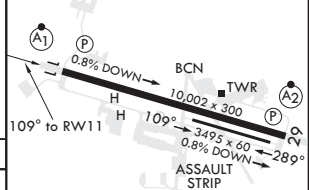
RNP APCH  
DME/DME RNP-0.3 NA

**†** Missed approach requires use of RNAV or ATC RADAR monitoring.



EMERG SAFE ALT 100 NM 7700

		2000 3000 BATLL ELEV 1069 TDZE 1069			
CATEGORY	A	B	C	D	E
LNAV MDA*	1600/40	531 (600-3/4)	1600/55	531 (600-1)	
<b>C</b> CIRCLING**	1660-1	591 (600-1)	1700-1 3/4 631 (700-1 3/4)	1700-2 631 (700-2)	1700-2 1/4 631 (700-2 1/4)



HIRL all Rwys  
REIL Rwys 11, 29

MARIETTA, GEORGIA  
Amdt 1 05NOV20

33°55'N - 84°31'W

DOBBINS ARB (KMGE)

# RNAV (GPS) RWY 11

SE-4, 25 FEB 2021 to 25 MAR 2021

SE-4, 25 FEB 2021 to 25 MAR 2021