

MARIETTA, GEORGIA

# RNAV (GPS) RWY 29

APCH CRS <b>289°</b>	Rwy Idg <b>10,002</b>
	TDZE <b>1014</b>
	Arpt Elev <b>1069</b>

AL-959 (USAF)

DOBBINS ARB (KMGE)

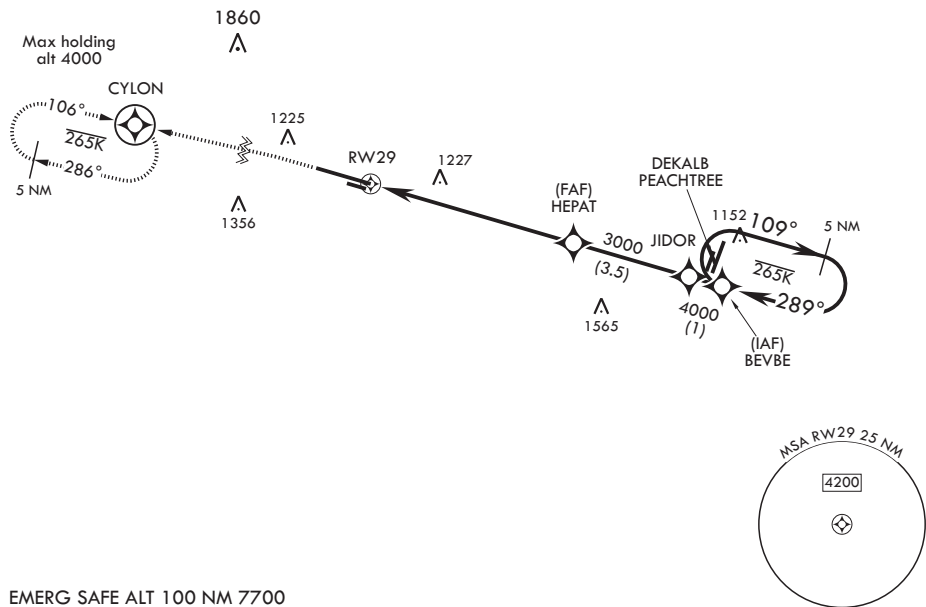
▼ \* When ALS inop, increase CAT AB RVR to 55 and vis to 1 mile, CAT CDE vis to 1 1/2 miles.  
\*\* Circling not authorized N of Rwy 11-29 for CAT DE. Circling to assault strip not authorized.

SALS (A2) † MISSED APPROACH: Climb to 2000 then climbing left turn to 3000 direct CYLON and hold.

ATIS <b>269.5</b>	ATLANTA APP CON/DEP CON <b>121.0 268.7</b>	TOWER <b>120.75 370.875</b>	GND CON <b>125.3 275.8</b>	ASR
----------------------	---	--------------------------------	-------------------------------	-----

DME/DME RNP-0.3 NA  
RNP APCH

† Missed approach requires use of RNAV or ATC RADAR monitoring.



EMERG SAFE ALT 100 NM 7700

	†† LNAV only	ELEV 1069	TDZE 1014		
CATEGORY	A	B	C	D	E
LNAV MDA*	1540/40	526 (500-3/4)	1540-1 1/4	526	(500-1 1/4)
CIRCLING**	1660-1	591 (600-1)	1700-1 3/4 631 (700-1 3/4)	1700-2 631 (700-2)	1700-2 1/4 631 (700-2 1/4)

MARIETTA, GEORGIA  
Amdt 1 05NOV20

33°55'N - 84°31'W

DOBBINS ARB (KMGE)

# RNAV (GPS) RWY 29

SE-4, 25 FEB 2021 to 25 MAR 2021

SE-4, 25 FEB 2021 to 25 MAR 2021