

TACAN RWY 11

TACAN Chan 77	APCH CRS 106°	Rwy ldg 10,002 TDZE 1069 Arprt Elev 1069	AL-959 [USAF]	DOBBINS ARB (KMGE)
-------------------------	-------------------------	---	---------------	--------------------

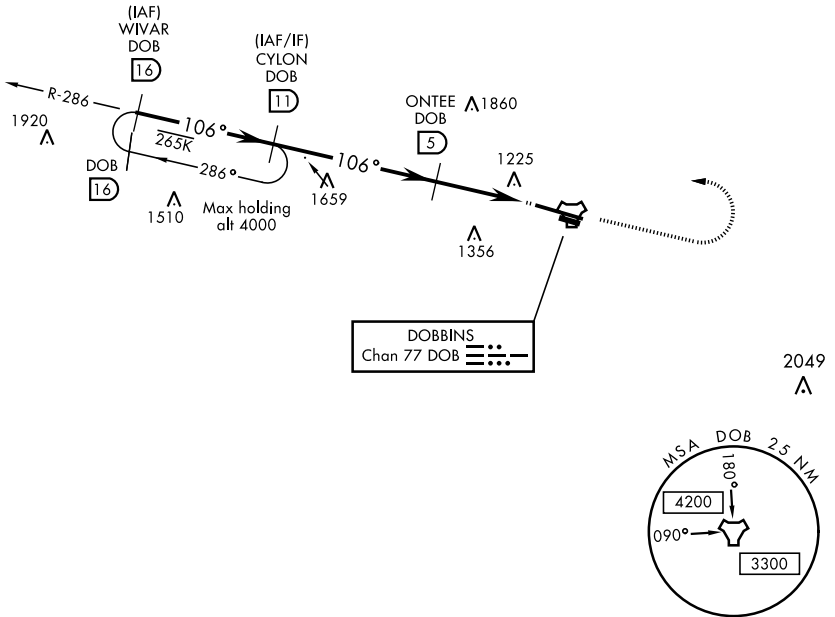
▼ * When ALS inop, increase CAT AB RVR to 55 and vis to 1 mile, CAT CDE vis to 1½ miles.
 ** Circling not authorized N of Rwy 11-29 for CAT DE aircraft. Circling to assault strip not authorized.

ALSF-1

† MISSED APPROACH: Climb to 2000 on track 106°, then climbing left turn to 3000, intercept DOB TACAN R-286 to CYLON and hold.

ATIS ★ 269.5	ATLANTA APP CON 121.0 268.7	DOBBINS TOWER ★ 120.75 370.875	GND CON 125.3 275.8	ASR
------------------------	---------------------------------------	--	-------------------------------	-----

† Missed approach requires use of RNAV or ATC RADAR monitoring.



SE-4, 25 FEB 2021 to 25 MAR 2021

SE-4, 25 FEB 2021 to 25 MAR 2021

EMERG SAFE ALT 100 NM 7700

WIVAR R-286 (16)	CYLON (11)	2000 tr 106°	3000	CYLON DOB (11)	ELEV 1069	TDZE 1069
CATEGORY	A	B	C	D	E	
S-11*	1600/40	531 (600-¾)	1600/55	531 (600-1)		
CIRCLING**	1660-1	591 (600-1)	1700-1¾ 631 (700-1¾)	1700-2 631 (700-2)	1700-2¼ 631 (700-2¼)	REIL Rwy 11-29 HIRL Rwy 11-29

TACAN RWY 11