

TACAN RWY 29

TACAN Chan 77	APCH CRS 291°	Rwy ldg 10,002 TDZE 1014 Arprt Elev 1069	AL-959 [USAF]	DOBBINS ARB (KMGE)
-------------------------	-------------------------	---	---------------	--------------------

▼ * When ALS inop, increase CAT AB RVR to 55 and vis to 1 mile, CAT CDE vis to 1¾ miles.
 ** Circling not authorized N of Rwy 11-29 for CAT DE aircraft. Circling to assault strip not authorized.

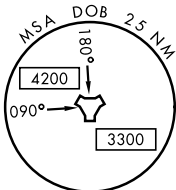
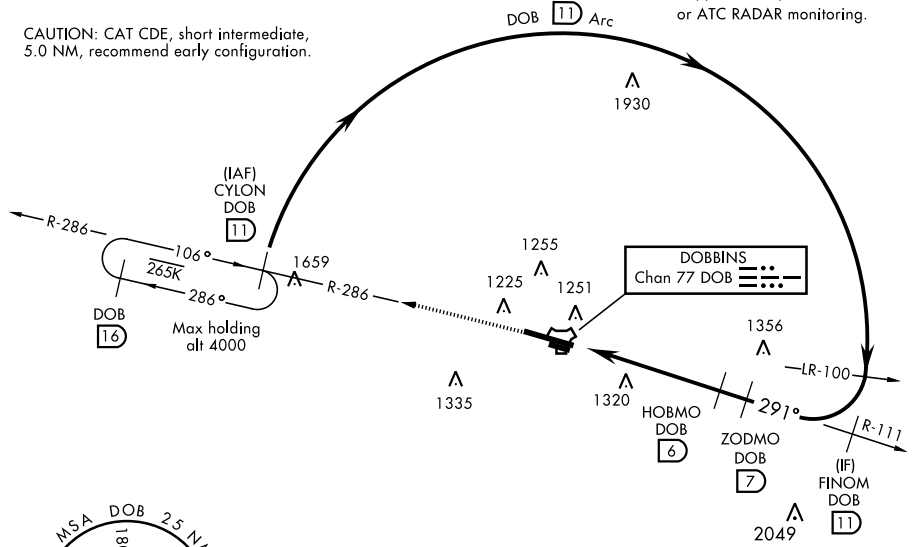


† MISSED APPROACH: Climb to 3000 via DOB TACAN R-286 to CYLON and hold.

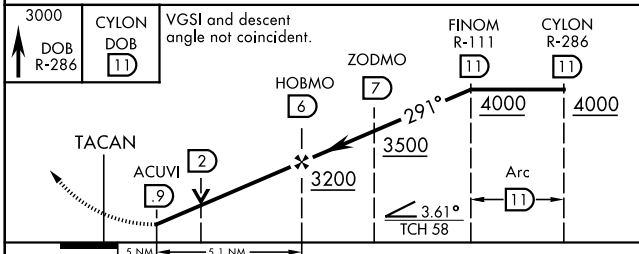
ATIS ★ 269.5	ATLANTA APP CON 121.0 268.7	DOBBINS TOWER ★ 120.75 370.875	GND CON 125.3 275.8	ASR
------------------------	---------------------------------------	--	-------------------------------	-----

† Missed approach requires use of RNAV or ATC RADAR monitoring.

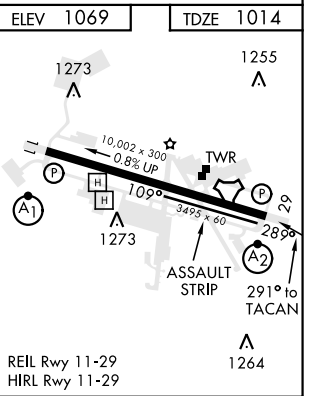
CAUTION: CAT CDE, short intermediate, 5.0 NM, recommend early configuration.



EMERG SAFE ALT 100 NM 7700



CATEGORY	A	B	C	D	E
S-29 *	1580/40 566 (600-¾)		1580-1¾	566 (600-1¾)	
CIRCLING **	1660-1 591 (600-1)		1700-1¾ 631 (700-1¾)	1700-2 631 (700-2)	1700-2¼ 631 (700-2¼)



TACAN RWY 29

SE-4, 25 FEB 2021 to 25 MAR 2021

SE-4, 25 FEB 2021 to 25 MAR 2021