

VORTAC DWN 109.0 Chan 27	APP CRS 239°	Rwy Idg TDZE Apt Elev	N/A N/A 1028
---------------------------------------	------------------------	-----------------------------	---

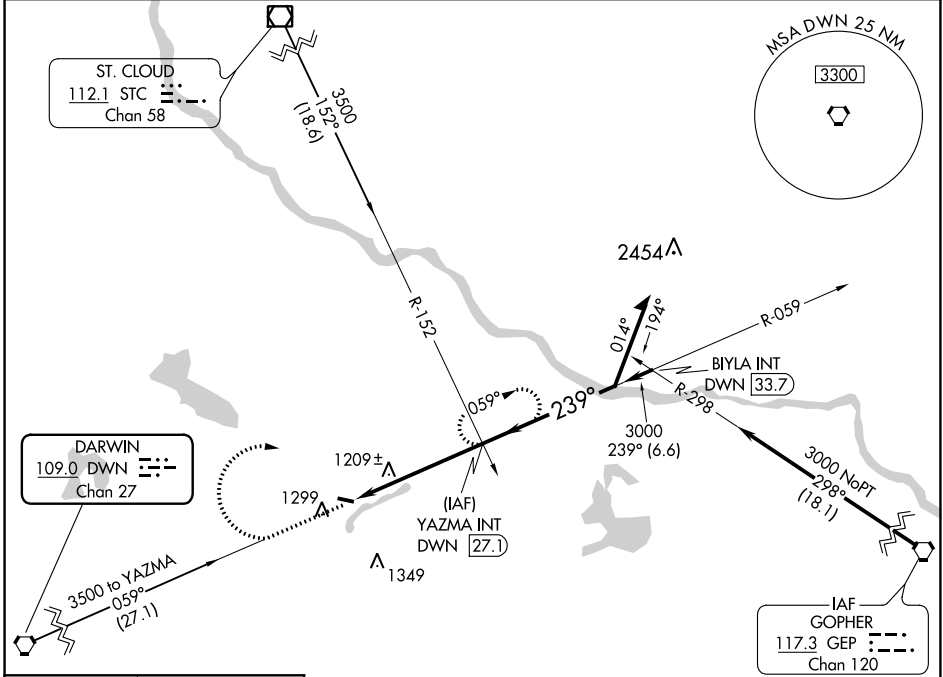
VOR-A

MAPLE LAKE MUNI-BILL MAVENCAMP SR FIELD (MGG)

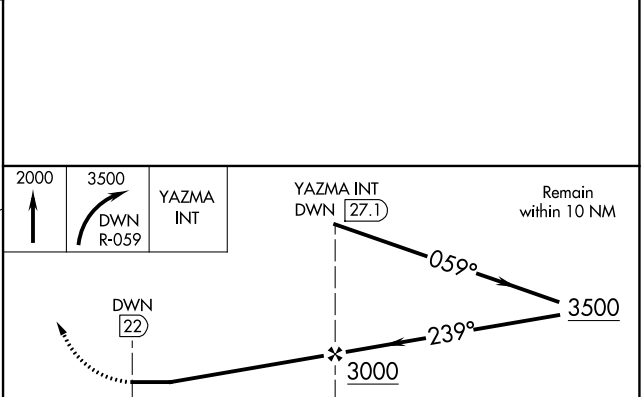
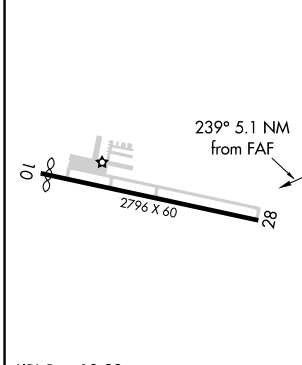
⚠ When local altimeter setting not received, use Buffalo altimeter setting and increase all MDA 40 feet and increase Circling Cat C visibility ¼ mile.
Night Landing: Rwy 28 NA. Helicopter visibility reduction below 1 SM NA.

MISSED APPROACH: Climb to 2000 then climbing right turn to 3500 via DWN R-059 to YAZMA INT/27.1 DME and hold.

AWOS-3 128.325	MINNEAPOLIS APP CON 126.5 335.65	UNICOM 122.8 (CTAF)
--------------------------	--	-------------------------------



ELEV 1028



FAF to MAP 5.1 NM					
Knots	60	90	120	150	180
Min:Sec	5:06	3:24	2:33	2:02	1:42
CATEGORY	A	B	C	D	
CIRCLING	1660-1 632 (700-1)	1660-1¼ 632 (700-1¼)	1660-1¾ 632 (700-1¾)	NA	

VOR-A

NC-1, 25 FEB 2021 to 25 MAR 2021

NC-1, 25 FEB 2021 to 25 MAR 2021