

# HI-ILS or LOC RWY 10

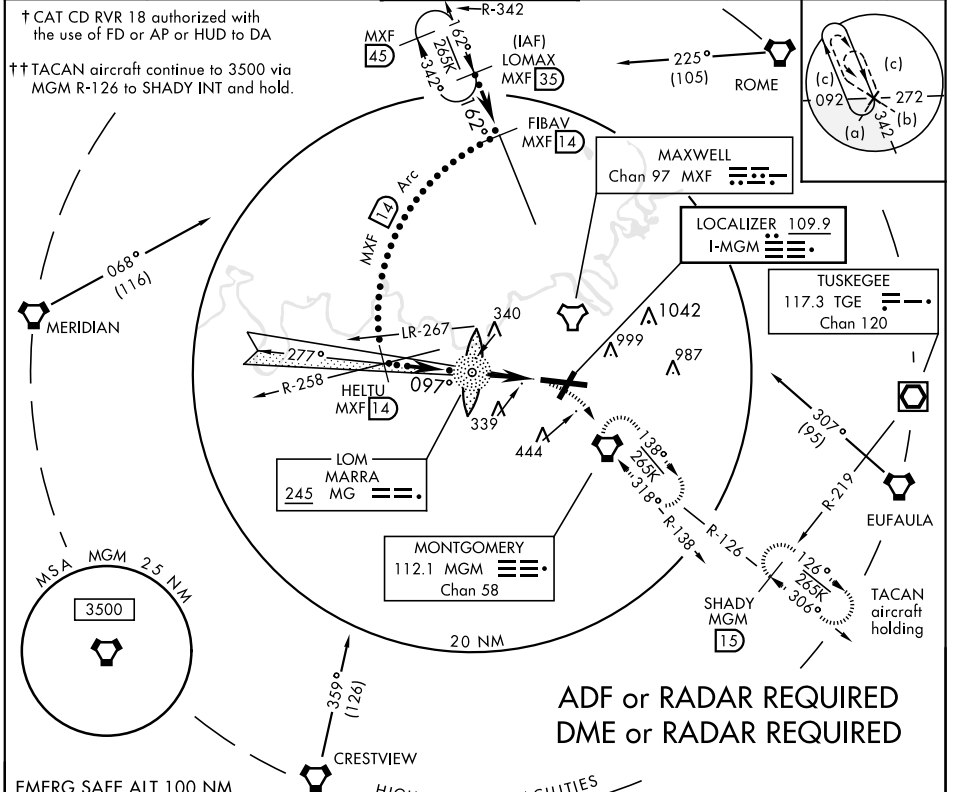
LOC I-MGM <b>109.9</b>	APCH CRS <b>097°</b>	Rwy ldg TDZE Arprt Elev <b>9020</b> <b>219</b> <b>221</b>	JAL-272 [USAF] MONTGOMERY REGIONAL (DANNELLY FIELD) (KMGM)
---------------------------	-------------------------	--	---

▼ \* When ALS inop, increase vis all CATs to RVR 40.  
\*\* When ALS inop, incr CAT C vis to RVR 50, CAT DE RVR 60.  
▲ \*\*\* Circling not authorized for CAT E N of Rwy 10-28.



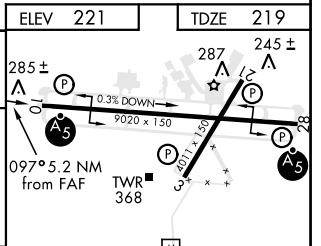
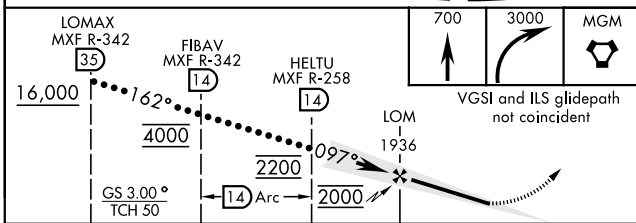
†† MISSED APPROACH: Climb to 700 then climbing right turn to 3000 direct MGM VORTAC and hold, continue climb-in-hold to 3000.

ATIS * <b>120.675</b>	MONTGOMERY APP CON <b>124.0 363.025</b>	MONTGOMERY TOWER * <b>119.7(CTA) 360.85</b>	GND CON <b>121.7 348.6</b>	CLNC DEL <b>118.3 270.3</b>	ASR ASOS
--------------------------	--	--	-------------------------------	--------------------------------	-------------



**ADF or RADAR REQUIRED**  
**DME or RADAR REQUIRED**

EMERG SAFE ALT 100 NM  
5000 FROM "MGM" VORTAC



CATEGORY	C	D	E	FAF to MAP 5.2 NM					
	S-ILS 10 *†	419/24	200	(200-½)	Knots	120	140	160	180
S-LOC 10 **	660/45	441	(500-¾)	Min:Sec	2:36	2:14	1:57	1:44	1:34
*** CIRCLING	800-1½ 579 (600-1½)	860-2 639 (700-2)	860-2¼ 639 (700-2¼)						

# HI-ILS or LOC RWY 10

SE-4, 25 FEB 2021 to 25 MAR 2021

SE-4, 25 FEB 2021 to 25 MAR 2021