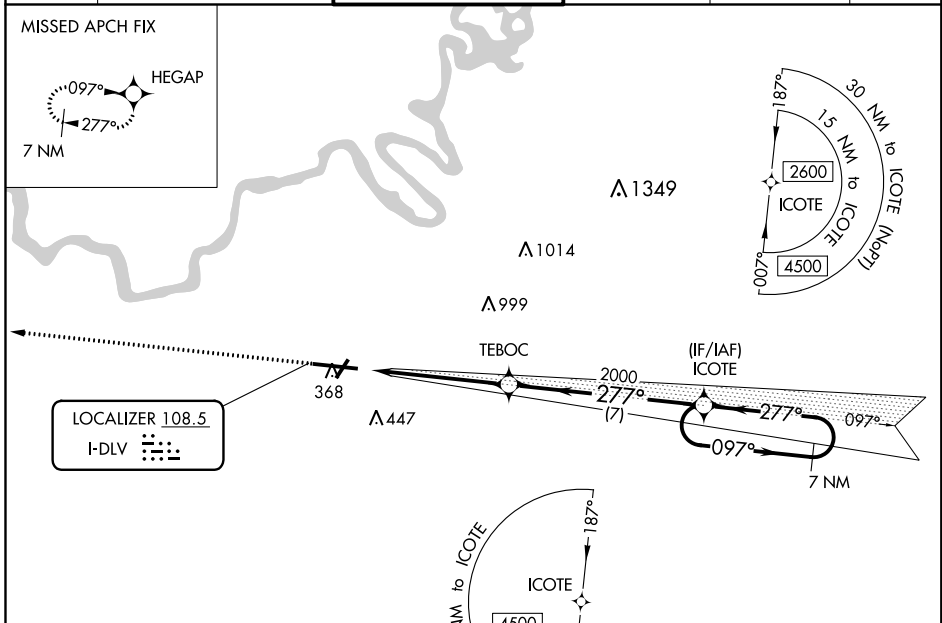


LOC I-DLV	APP CRS	Rwy Idg	9020
108.5	277°	TDZE	197
		Apt Elev	221

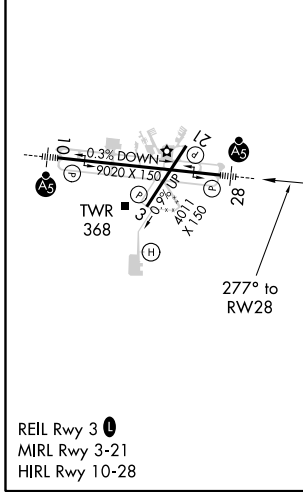
ILS Z RWY 28

MONTGOMERY RGNL (DANNELLY FIELD) (MGM)

NA GPS required. ASR For inop MALSRS, increase S-ILS 28 Cat E visibility to 3/4 mile.		MALSRS 	MISSED APPROACH: Climb to 3100 direct HEGAP and hold.		
ATIS 120.675	MONTGOMERY APP CON * 124.0 363.025	DANNELLY TOWER * 119.7 (CTAF) 360.85	GND CON 121.7 348.6	CLNC DEL 118.3 270.3	UNICOM 122.95



ELEV 221	TDZE 197
----------	----------



GPS REQUIRED

3100 HEGAP

VGSI and ILS glidepath not coincident (VGSI Angle 3.00/TCH 75).

ICOTE 7 NM Holding Pattern

TEBOC 2000

ICOTE 2600

097°

277°

2000

GS 3.00° TCH 56

CATEGORY	A	B	C	D	E
S-ILS 28		397-1/2		200 (200-1/2)	

SE-4, 25 FEB 2021 to 25 MAR 2021

SE-4, 25 FEB 2021 to 25 MAR 2021