

WAAS CH 50100 W10A	APP CRS 097°	Rwy Idg TDZE Apt Elev	9020 219 221
--	------------------------	-----------------------------	---

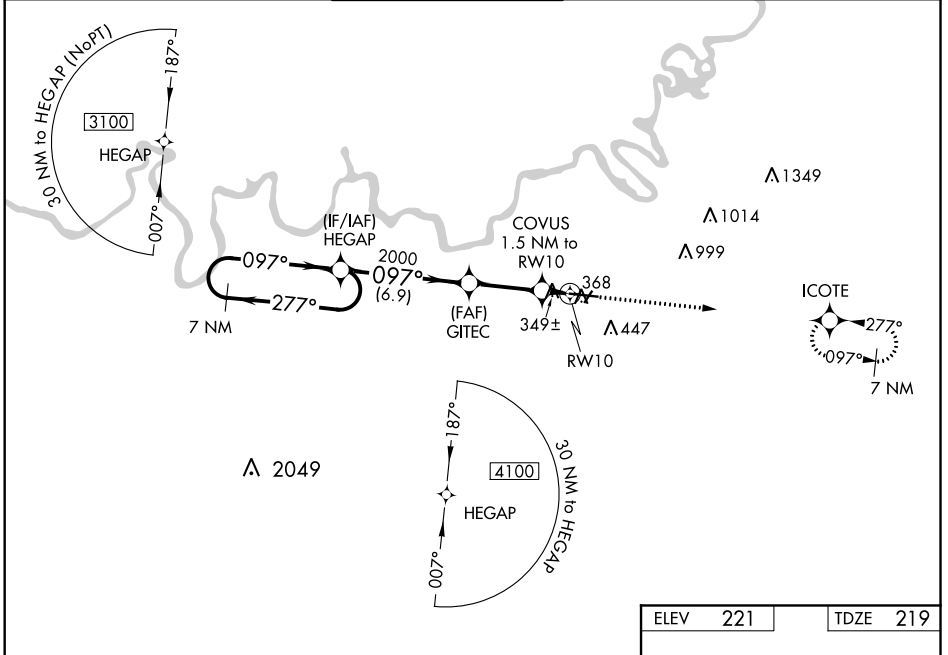
RNAV (GPS) RWY 10

MONTGOMERY RGNL (DANNELLY FIELD) (MGM)

RNP APCH.		DANNELLY TOWER ★		GND CON	CLNC DEL	UNICOM
<p>▼ For uncompensated Baro-VNAV systems, LNAV/VNAV NA below -8°C (18°F) or above 54°C (130°F). For inop MALS, increase LPV Cat E visibility to RVR 4000; increase LNAV/VNAV Cat E visibility to RVR 5000; increase LNAV Cats C/D/E visibility to 1½ mile. Circling for Cat E NA north of Rwy 10-28. ▲ ASR **RVR 1800 authorized with use of FD or AP or HUD to DA.</p>		★		121.7 348.6	118.3 270.3	122.95
ATIS	MONTGOMERY APP CON ★	DANNELLY TOWER ★		GND CON	CLNC DEL	UNICOM
120.675	124.0 363.025	119.7 (CTAF) 360.85		121.7 348.6	118.3 270.3	122.95

MALS

MISSED APPROACH:
Climb to 2600 direct
ICOTE and hold.



VGSi and RNAV glidepath not coincident (VGSi Angle 3.00/TCH 64).						2600	ICOTE
7 NM Holding Pattern						*LNAV only.	
3100 ← 277° → 097° → 097° → 2000						*1 NM to RWY 10	
GP 3.00° TCH 50						*740	
6.9 NM						0.5 NM 1 NM	
CATEGORY	A	B	C	D	E		
LPV DA **	419/24		200 (200-½)				
LNAV/VNAV DA	530/24		311 (400-½)				
LNAV MDA	600/24	381 (400-½)		600/35		381 (400-¾)	
CIRCLING	700-1	479 (500-1)		800-1½	860-2	860-2¼	
				579 (600-1½)	639 (700-2)	639 (700-2¼)	

ELEV 221	TDZE 219
----------	----------

097° to RWY 10

TWR 368

REIL Rwy 3
MIRL Rwy 3-21
HIRL Rwy 10-28

RNAV (GPS) RWY 10

SE-4, 25 FEB 2021 to 25 MAR 2021

SE-4, 25 FEB 2021 to 25 MAR 2021