

APP CRS 101°	Rwy Idg 3712
	TDZE 679
	Apt Elev 686

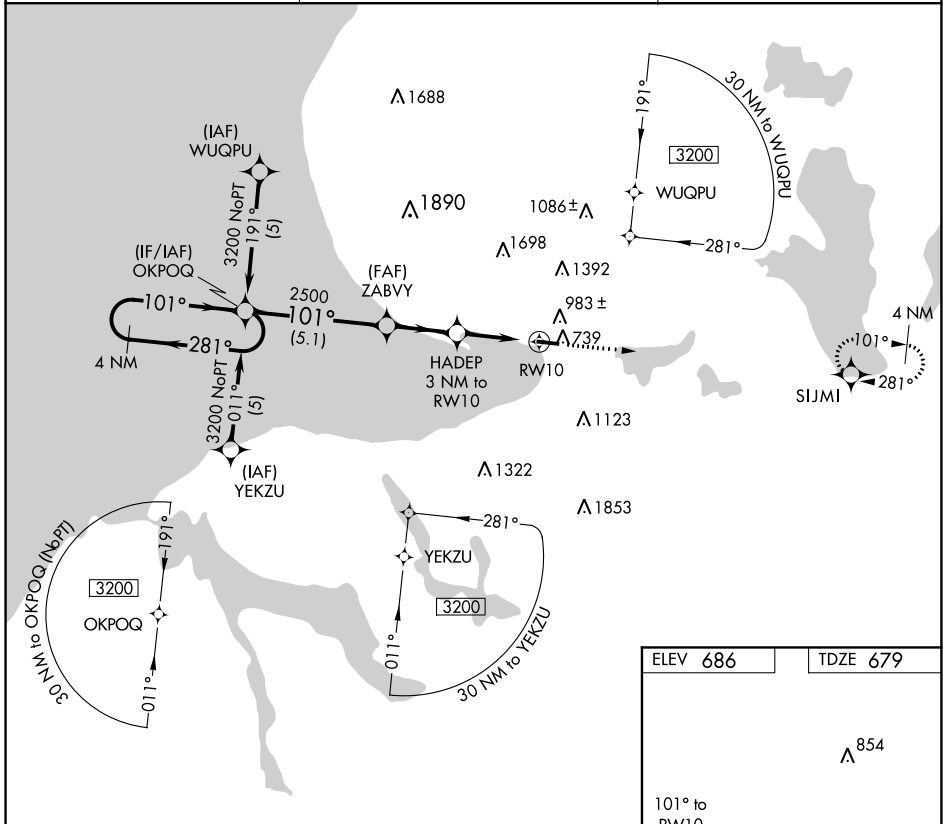
RNAV (GPS) RWY 10

HARBOR SPRINGS (MGN)

⚠ DME/DME RNP-0.3 NA. When local altimeter setting not received, use
⚠ QNH altimeter setting and increase all MDAs 40 feet. Procedure NA
 at night. Helicopter visibility reduction below 1 SM NA.

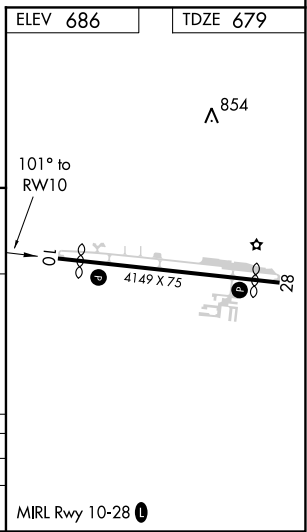
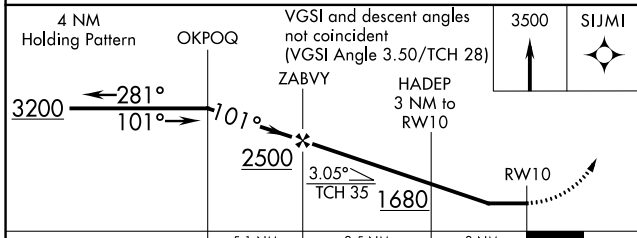
MISSED APPROACH: Climb to 3500 direct SIJMI and hold.

AWOS-3 119.925	MINNEAPOLIS CENTER 134.6 354.05	UNICOM 122.8 (CTAF) 0
--------------------------	---	---------------------------------



EC-1, 25 FEB 2021 to 25 MAR 2021

EC-1, 25 FEB 2021 to 25 MAR 2021



CATEGORY	A	B	C	D
LNAV MDA	1240-1	561 (600-1)		NA
CIRCLING	1380-1 694 (700-1)	1500-1 ¼ 814 (900-1 ¼)		NA