

APP CRS <b>281°</b>	Rwy Idg <b>3705</b>
	TDZE <b>686</b>
	Apt Elev <b>686</b>

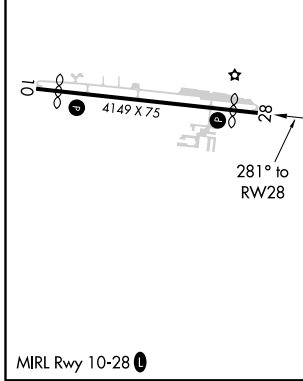
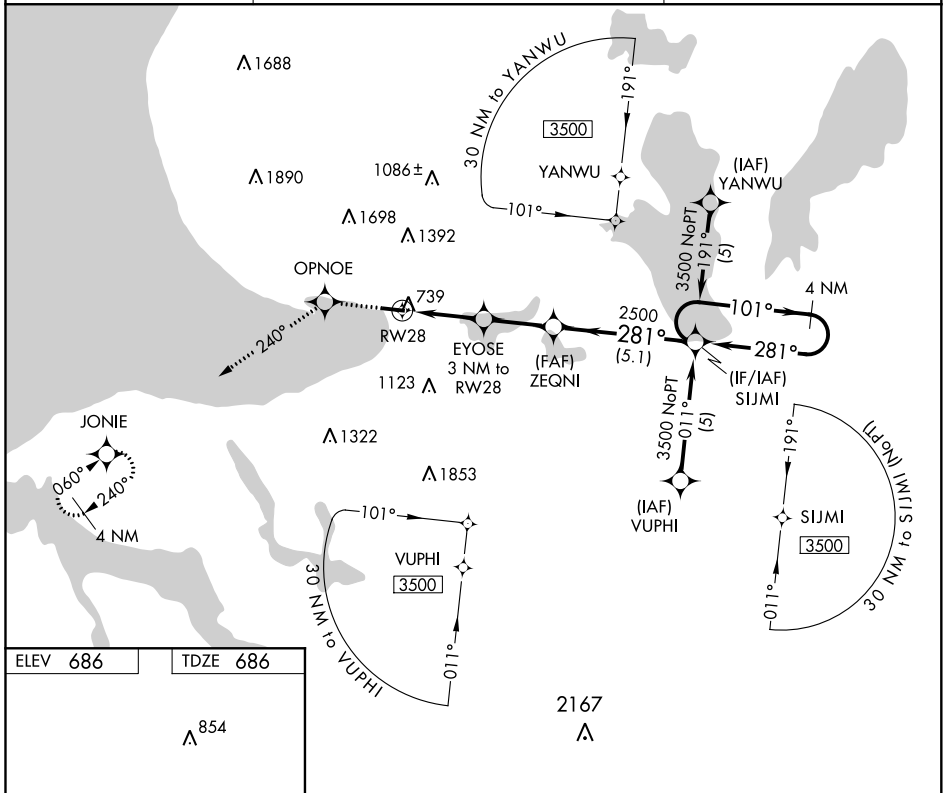
# RNAV (GPS) RWY 28

HARBOR SPRINGS (MGN)

**⚠** DME/DME RNP-0.3 NA. Helicopter visibility reduction below 1 SM NA. When local altimeter setting not received, use Pellsion altimeter setting and increase all MDAs 40 feet. Procedure NA at night.

**⚠** MISSED APPROACH: Climb to 3400 direct OPN OE and via 240° track to JONIE and hold.

AWOS-3 <b>119.925</b>	MINNEAPOLIS CENTER <b>134.6 354.05</b>	UNICOM <b>122.8</b> (CTAF) <b>📶</b>
--------------------------	---	--



ELEV 686	TDZE 686	2167 $\Delta$	
3400	OPN OE	JON IE	VGSI and descent angles not coincident (VGSI Angle 4.00/TCH 35).
↑	✧ tr 240°	✧	4 NM Holding Pattern
RWY 28		EYO SE 3 NM to RWY 28	ZEQ NI
1680		2500	3500
3 NM		2.5 NM	5.1 NM
CATEGORY	A	B	C D
LNAV MDA	1120-1	434 (500-1)	NA
CIRCLING	1380-1 694 (700-1)	1500-1¼ 814 (900-1¼)	NA

EC-1, 25 FEB 2021 to 25 MAR 2021

EC-1, 25 FEB 2021 to 25 MAR 2021