


LOC/DME I-MHR 111.35 Chan 50(Y)	APP CRS 221°	Rwy Idg 11301 TDZE 98 Apt Elev 98
--	------------------------	--

ILS or LOC RWY 22L

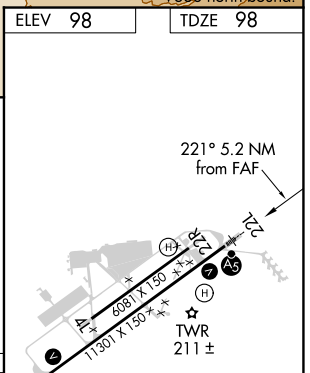
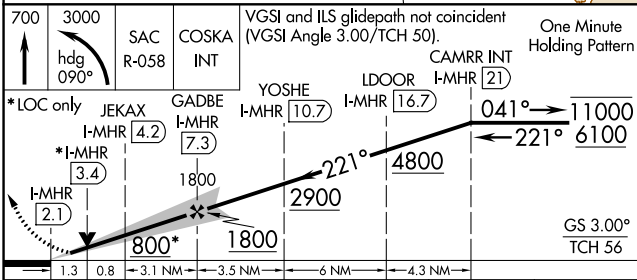
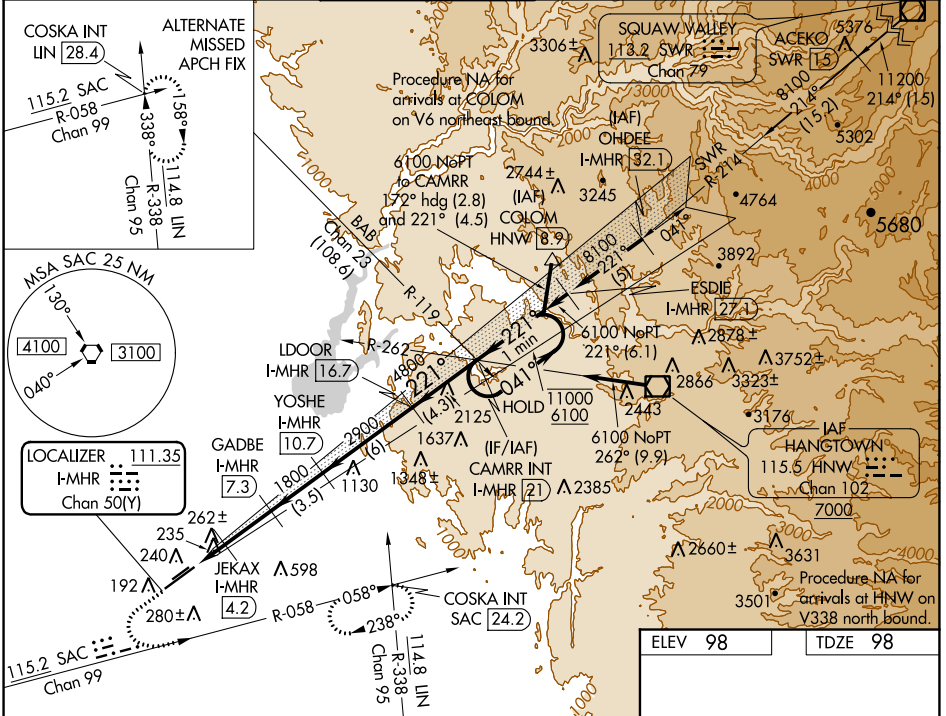
SACRAMENTO MATHER (MHR)

DME required for LOC only.

⚠ Circling NA northwest of Rwy 4R-22L. For inop ALS, increase S-ILS Cat E visibility to RVR 4000 and S-LOC Cat C/D/E visibility to RVR 6000.
Procedure NA when tower closed.
#RVR 1800 authorized with use of FD or AP or HUD to DA.

MALS R  MISSED APPROACH: Climb to 700 then climbing left turn to 3000 on heading 090° and SAC VORTAC R-058 to COSKA INT/ SAC 24.2 DME and hold.

ATIS 118.325	NORCAL APP CON 127.4 317.5	MATHER TOWER ★ 120.65 (CTAF) 282.25	GND CON 121.85 307.9	CLNC DEL 121.85 307.9	UNICOM 122.95
------------------------	--------------------------------------	---	--------------------------------	---------------------------------	-------------------------



CATEGORY	A	B	C	D	E
S-ILS 22L#	298/24 200 (200-½)				
S-LOC 22L	500/24 402 (500-½)	500/40 402 (500-¾)			
CIRCLING	560-1 462 (500-1)	600-1½ 502 (600-1½)	800-2¼ 702 (800-2¼)	800-2½ 702 (800-2½)	

MIRL Rwy 4L-22R 

HIRL Rwy 4R-22L 

SW-2, 25 FEB 2021 to 25 MAR 2021

SW-2, 25 FEB 2021 to 25 MAR 2021