

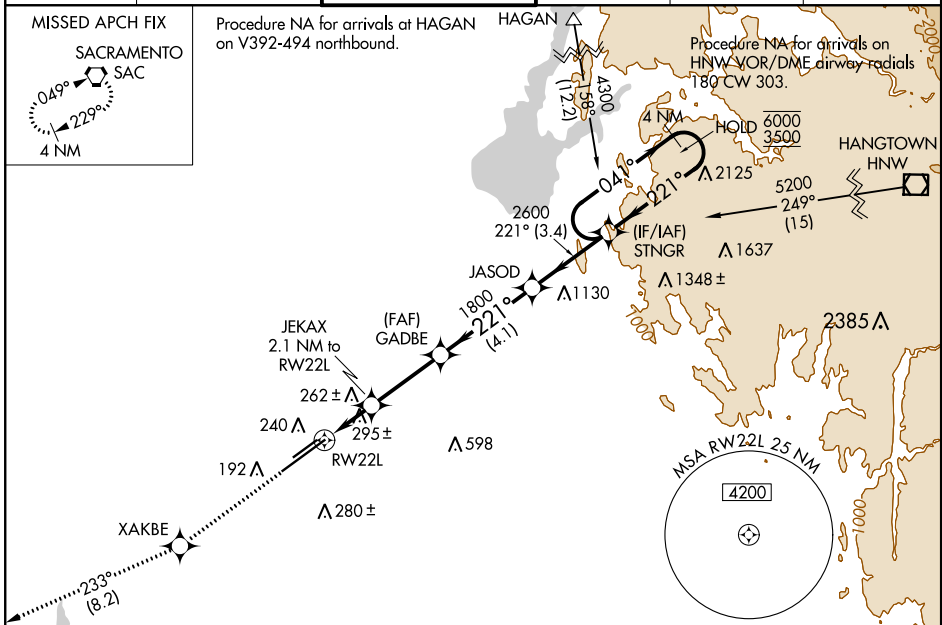
WAAS CH <b>40225</b> <b>W22A</b>	APP CRS <b>221°</b>	Rwy Idg <b>11301</b> TDZE <b>98</b> Apt Elev <b>98</b>
--	------------------------	--

# RNAV (GPS) RWY 22L

SACRAMENTO MATHER (MHR)

RNP APCH.	MALSR	MISSED APPROACH: Climb to 3000 direct XAKBE and on track 233° to SAC VORTAC and hold.
<p><b>⚠</b> Circling NA northwest of Rwy 4R-22L. For uncompensated Baro-VNAV systems, LNAV/VNAV NA below -15°C or above 54°C. For inop ALS, increase LNAV/VNAV all Cats visibility to 1½ SM and LNAV Cat C/D visibility to 1½ SM.</p>		

ATIS <b>118.325</b>	NORCAL APP CON <b>127.4 317.5</b>	MATHER TOWER ★ <b>120.65 (CTAF) 282.25</b>	GND CON <b>121.85 307.9</b>	CLNC DEL <b>121.85 307.9</b>	UNICOM <b>122.95</b>
------------------------	--------------------------------------	---	--------------------------------	---------------------------------	-------------------------

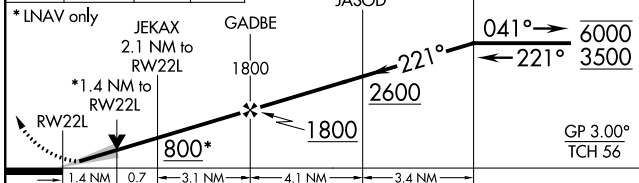


SW-2, 25 FEB 2021 to 25 MAR 2021

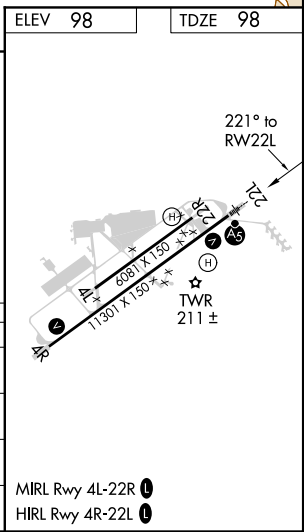
SW-2, 25 FEB 2021 to 25 MAR 2021

ELEV <b>98</b>	TDZE <b>98</b>
----------------	----------------

3000	XAKBE	SAC	VGSI and RNAV glidepath not coincident (VGSI Angle 3.00/TCH 50).
ir 233°			



CATEGORY	A	B	C	D
LPV DA		298-½	200 (200-½)	
LNAV/VNAV DA		517-¾	419 (500-¾)	
LNAV MDA	580-½	482 (500-½)	580-1	482 (500-1)
<b>C</b> CIRCLING	580-1	482 (500-1)	600-1½ 502 (600-1½)	800-2¼ 702 (800-2¼)



MIRL Rwy 4L-22R **1**  
HIRL Rwy 4R-22L **1**