

LOC/DME I-MHT 109.1 Chan 28	APP CRS 352°	Rwy Idg 7650 TDZE 265 Apt Elev 266
--	------------------------	---

ILS RWY 35 (CAT II & III)

MANCHESTER (MHT)

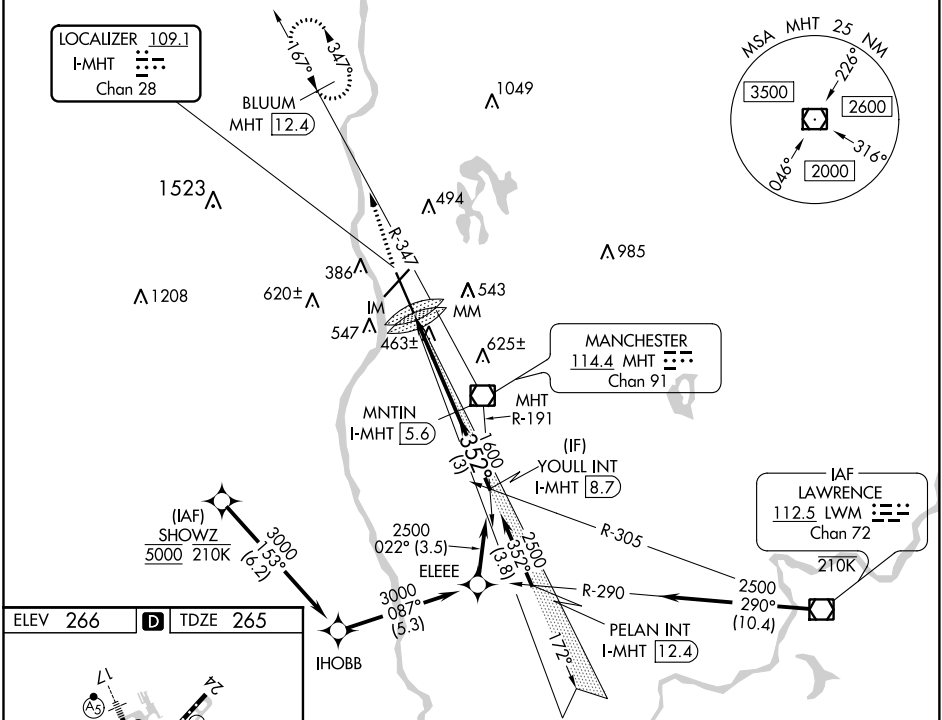
From SHOWZ: RNAV 1-DME/DME/IRU or GPS required for procedure entry.
DME required.

ALSF-2

MISSED APPROACH: Climb to 3000 on heading 355° and MHT VOR/DME R-347 to BLUUM/MHT 12.4 DME and hold, continue climb-in-hold to 3000.



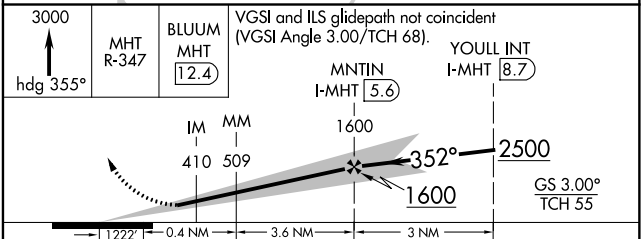
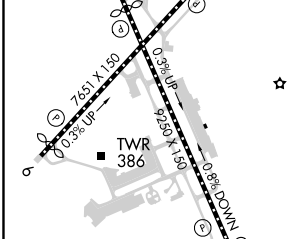
ATIS 119.55	BOSTON APP CON 124.9 269.075	MANCHESTER TOWER 121.3 239.025	GND CON 121.9	CLNC DEL 135.9
-----------------------	--	--	-------------------------	--------------------------



NE-1, 25 FEB 2021 to 25 MAR 2021

NE-1, 25 FEB 2021 to 25 MAR 2021

ELEV 266	D	TDZE 265
----------	----------	----------



CATEGORY	A	B	C	D
S-ILS 35	CAT II RA 101/12 100 DA 365			
S-ILS 35	CAT III RVR 07			

CATEGORY II & III ILS - SPECIAL AIRCREW & AIRCRAFT CERTIFICATION REQUIRED

REIL Rwy 6 and 24
TDZ/CL Rwy 17 and 35
HIRL Rwy 6-24 and 17-35