

LOC I-MJE 109.95	APP CRS 057°	Rwy ldg 7208 TDZE 224 Apt Elev 266
----------------------------	------------------------	---

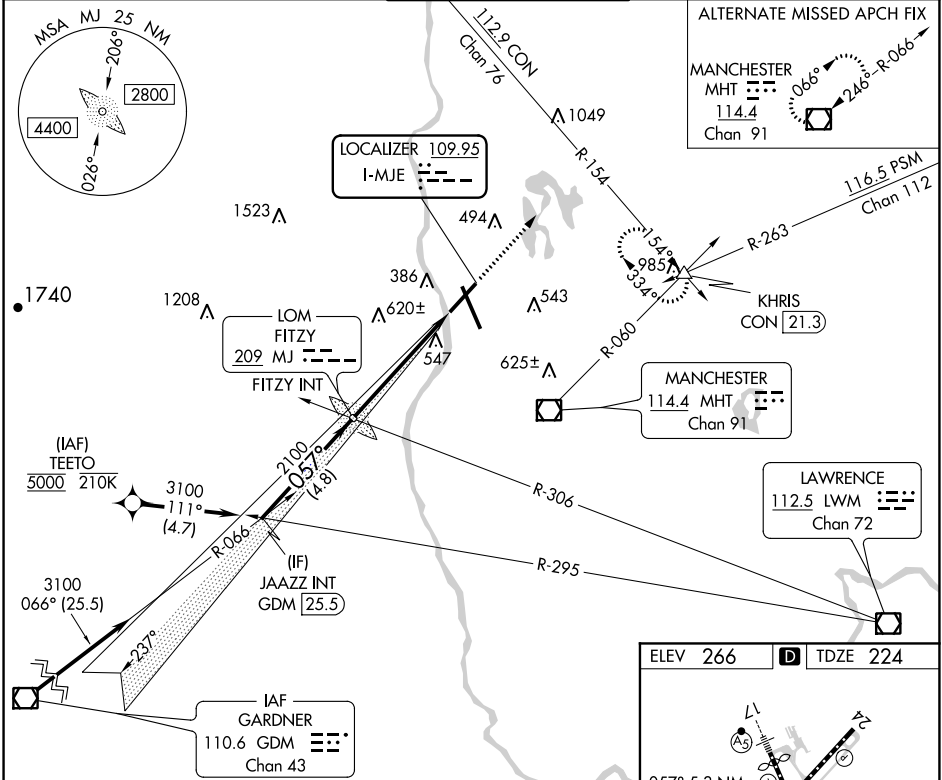
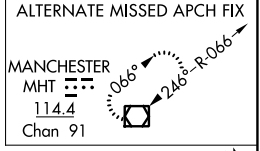
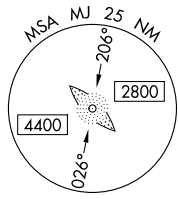
ILS or LOC RWY 6 MANCHESTER (MHT)

From TEETO: RNAV 1-DME/DME/IRU or GPS required for procedure entry.

⚠

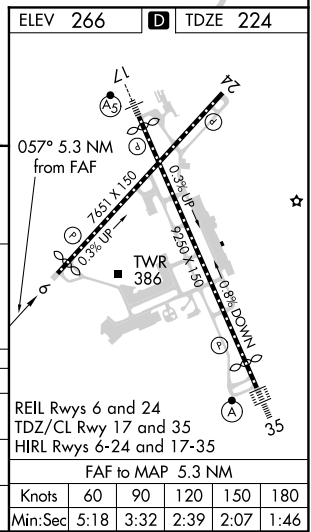
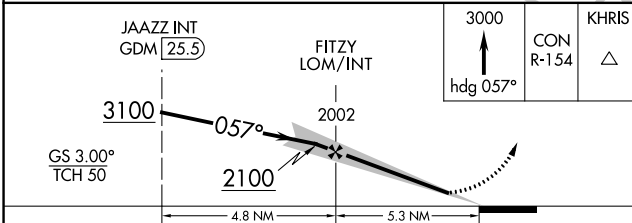
MISSED APPROACH: Climb to 3000 on heading 057° and CON VOR/DME R-154 to KHRIS INT/CON 21.3 DME and hold, continue climb-in-hold to 3000.

ATIS 119.55	BOSTON APP CON 124.9 269.075	MANCHESTER TOWER 121.3 239.025	GND CON 121.9	CLNC DEL 135.9
-----------------------	--	--	-------------------------	--------------------------



NE-1, 25 FEB 2021 to 25 MAR 2021

NE-1, 25 FEB 2021 to 25 MAR 2021



CATEGORY	A	B	C	D
S-ILS 6	474/40		250 (300-¾)	
S-LOC 6	840/55	616 (600-1)	840-1¾	616 (600-1¾)
C CIRCLING	880-1	614 (700-1)	980-2 714 (800-2)	1100-2¾ 834 (900-2¾)

ELEV 266	D TDZE 224
REIL Rwy 6 and 24 TDZ/CL Rwy 17 and 35 HIRL Rwy 6-24 and 17-35	
FAF to MAP 5.3 NM	
Knots	60 90 120 150 180
Min:Sec	5:18 3:32 2:39 2:07 1:46