

# MANCHESTER ONE DEPARTURE

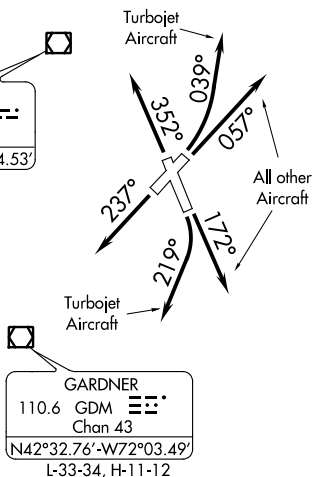
**TOP ALTITUDE:  
3000**

ATIS  
119.55  
CLNC DEL  
135.9  
GND CON  
121.9  
MANCHESTER TOWER  
121.3 239.025  
BOS DEP CON  
124.9 269.075

CAMBRIDGE  
115.0 CAM   
Chan 97  
N42°59.66'-W73°20.64'  
L-32-34, H-11-12

CONCORD  
112.9 CON   
Chan 76  
N43°13.19'-W71°34.53'  
L-32

KENNEBUNK  
117.1 ENE   
Chan 118  
N43°25.54'-W70°36.81'  
L-32, H-11-12



GARDNER  
110.6 GDM   
Chan 43  
N42°32.76'-W72°03.49'  
L-33-34, H-11-12

BOSTON  
112.7 BOS   
Chan 74  
N42°21.45'-W70°59.37'  
L-33-34, H-10-11-12

### TAKEOFF MINIMUMS:

Rwy 6: Standard.

Rwy 17: 300-1½ or standard with a minimum climb of 270' per NM to 600.

Rwy 24: Standard with a minimum climb of 335' per NM to 800.

Rwy 35: 300-1½ or standard with a minimum climb of 265' per NM to 1400.

NOTE: RADAR required.

NOTE: Chart not to scale.

### DEPARTURE ROUTE DESCRIPTION

TAKEOFF RUNWAY 6: TURBOJET AIRCRAFT - Climbing left turn heading 039°, thence....

ALL OTHER AIRCRAFT - Climb on heading 057° or as assigned by ATC, thence....

TAKEOFF RUNWAY 17: TURBOJET AIRCRAFT - Climbing right turn heading 219°, thence....

ALL OTHER AIRCRAFT - Climb on heading 172° or as assigned by ATC, thence....

TAKEOFF RUNWAY 24: Climb on heading 237° or as assigned by ATC, thence....

TAKEOFF RUNWAY 35: Climb on heading 352° or as assigned by ATC, thence....

...expect vectors to assigned route/navaid/fix. Maintain 3000 or as assigned by ATC.

Expect clearance to filed altitude/flight level within five (5) minutes after departure.

# MANCHESTER ONE DEPARTURE