

PPORT THREE DEPARTURE (RNAV)

MANCHESTER (MHT)
MANCHESTER, NEW HAMPSHIRE

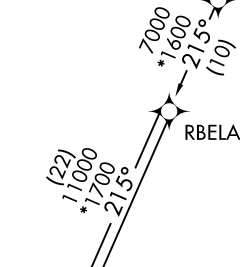
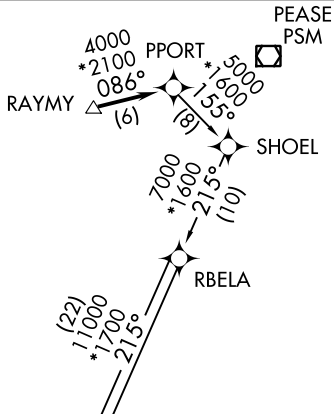
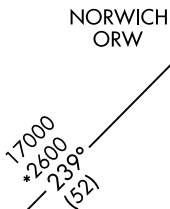
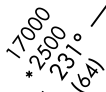
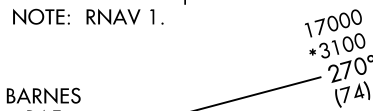
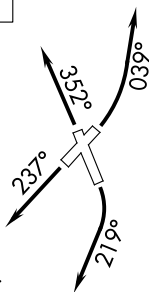
ATIS 119.55
CLNC DEL
135.9
GND CON
121.9
MANCHESTER TOWER
121.3 239.025
BOSTON DEP CON
124.9 269.075

**TOP ALTITUDE:
3000**

TAKEOFF MINIMUMS:

Rwy 6: Standard with minimum climb of 321' per NM to 3000.
Rwys 17, 24, 35: Standard with minimum climb of 320' per NM to 3000.

NOTE: For Turbojets only.
NOTE: DME/DME/IRU or GPS required.
NOTE: RADAR required.
NOTE: RNAV 1.



DEPARTURE ROUTE DESCRIPTION

- TAKEOFF RWY 6:** Climbing left turn heading 039°, thence. . . .
- TAKEOFF RWY 17:** Climbing right turn heading 219°, thence. . . .
- TAKEOFF RWY 24:** Climb heading 237°, thence. . . .
- TAKEOFF RWY 35:** Climb heading 352°, thence. . . .

. . . . expect vectors to RAYMY, then on depicted route to PPORT. Maintain 3000 or as assigned by ATC. Expect clearance to filed altitude/flight level within five (5) minutes after departure.

- BARNES TRANSITION (PPORT3.BAF):
- CALVERTON TRANSITION (PPORT3.CCC):
- NELIE TRANSITION (PPORT3.NELIE):

NOTE: Chart not to scale.

NE-1, 25 FEB 2021 to 25 MAR 2021

NE-1, 25 FEB 2021 to 25 MAR 2021