

APP CRS <b>171°</b>	Rwy ldg <b>8914</b>
	TDZE <b>229</b>
	Apt Elev <b>266</b>

# RNAV (RNP) Z RWY 17

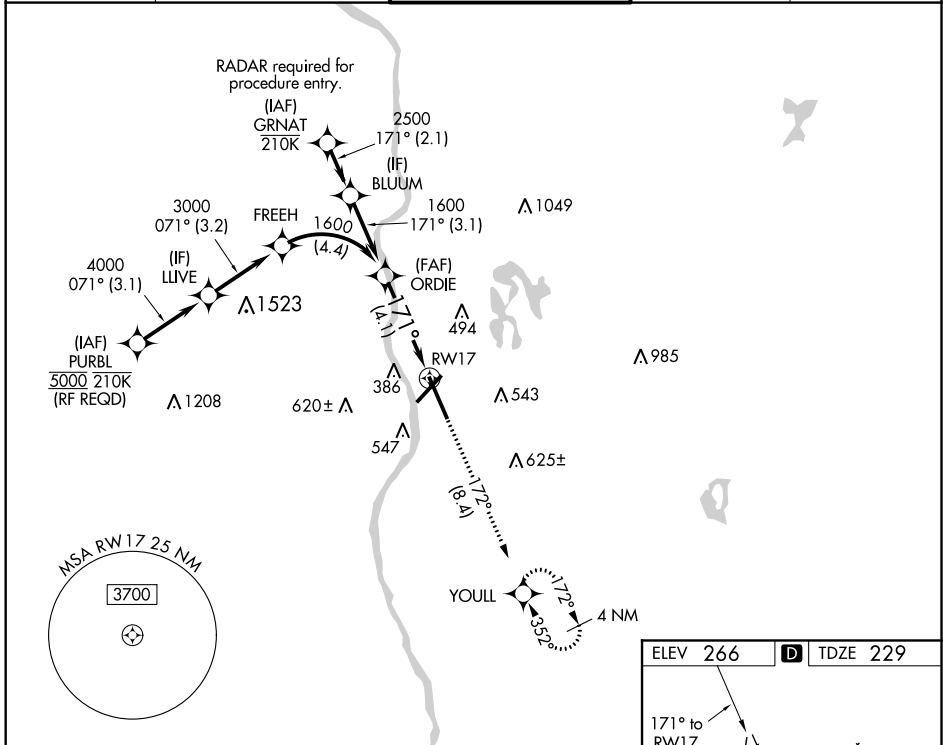
MANCHESTER (MHT)

**▼** For uncompensated Baro-VNAV systems, procedure NA below -20°C (-4°F) or above 48°C (118°F). When local altimeter setting not received, procedure NA. GPS required. For inop MALS/R, increase RNP 0.11 all Cats visibility to RVR 6000, RNP 0.26 all Cats visibility to 1¾ miles, and RNP 0.30 all Cats visibility to 2 miles.



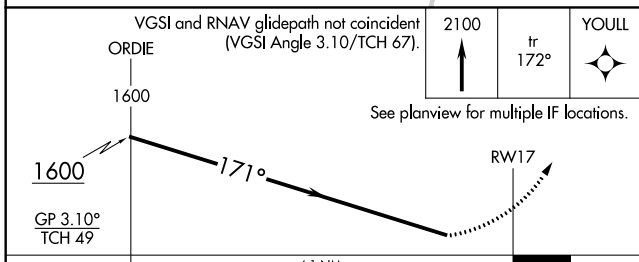
**MISSED APPROACH:**  
Climb to 2100 on track 172° to YOULL and hold.

ATIS <b>119.55</b>	BOSTON APP CON <b>124.9 269.075</b>	MANCHESTER TOWER <b>121.3 239.025</b>	GND CON <b>121.9</b>	CLNC DEL <b>135.9</b>
-----------------------	--	--	-------------------------	--------------------------

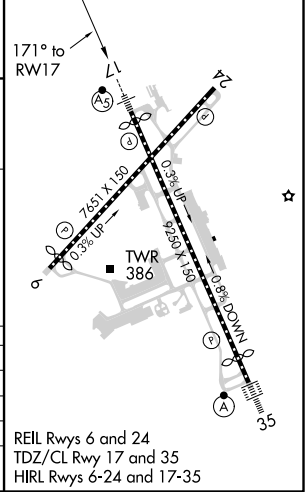


NE-1, 25 FEB 2021 to 25 MAR 2021

NE-1, 25 FEB 2021 to 25 MAR 2021



ELEV 266	<b>D</b> TDZE 229
----------	-------------------



CATEGORY	A	B	C	D
RNP 0.11 DA		604/40	375 (400-¾)	
RNP 0.26 DA		761/60	532 (500-1¼)	
RNP 0.30 DA		835-1½	606 (600-1½)	

**AUTHORIZATION REQUIRED**