

APP CRS	Rwy Idg	7650
352°	TDZE	265
	Apt Elev	266

RNAV (RNP) Z RWY 35

MANCHESTER (MHT)

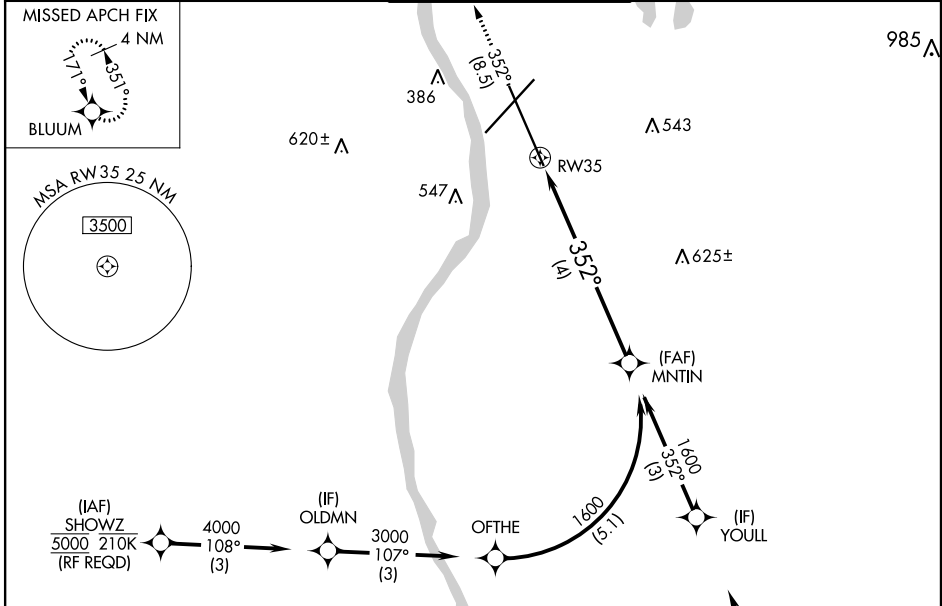
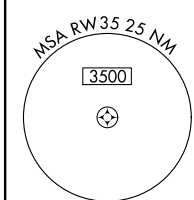
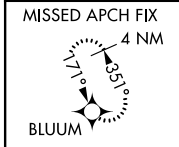
V For uncompensated Baro-VNAV systems, procedure NA below -18°C (0°F) or above 54°C (130°F). GPS required. When local altimeter not received, procedure NA. For inop ALSF-2, increase RNP 0.20 all Cats visibility to 1 ½ SM and RNP 0.30 all Cats visibility to 1 ¾ SM.

ALFS-2

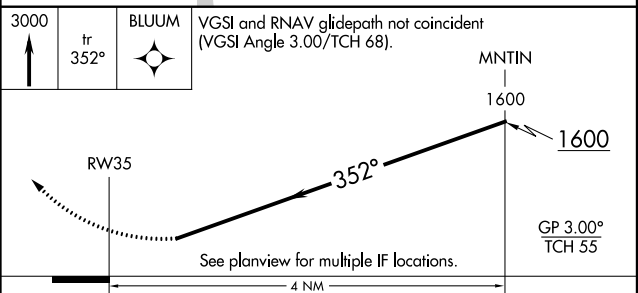
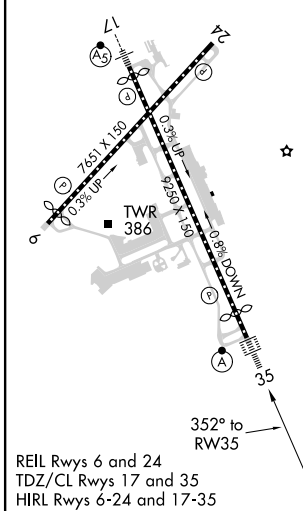


MISSED APPROACH: Climb to 3000 on track 352° to BLUUM and hold, continue climb-in-hold to 3000.

ATIS	BOSTON APP CON	MANCHESTER TOWER	GND CON	CLNC DEL
119.55	124.9 269.075	121.3 239.025	121.9	135.9



ELEV 266	D	TDZE 265
----------	----------	----------



CATEGORY	A	B	C	D
RNP 0.20 DA	755/60	490 (500-1 ¼)		
RNP 0.30 DA	802-1 ¾	537 (600-1 ¾)		

AUTHORIZATION REQUIRED

NE-1, 25 FEB 2021 to 25 MAR 2021

NE-1, 25 FEB 2021 to 25 MAR 2021