


| | | | |
|-------------------------|------------------------|----------------------------|-------------|
| WAAS CH 93807 | APP CRS 171° | Rwy Idg TDZE 229 | 8914 |
| W17A | | Apt Elev 266 | |

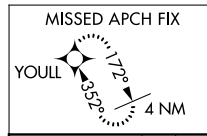
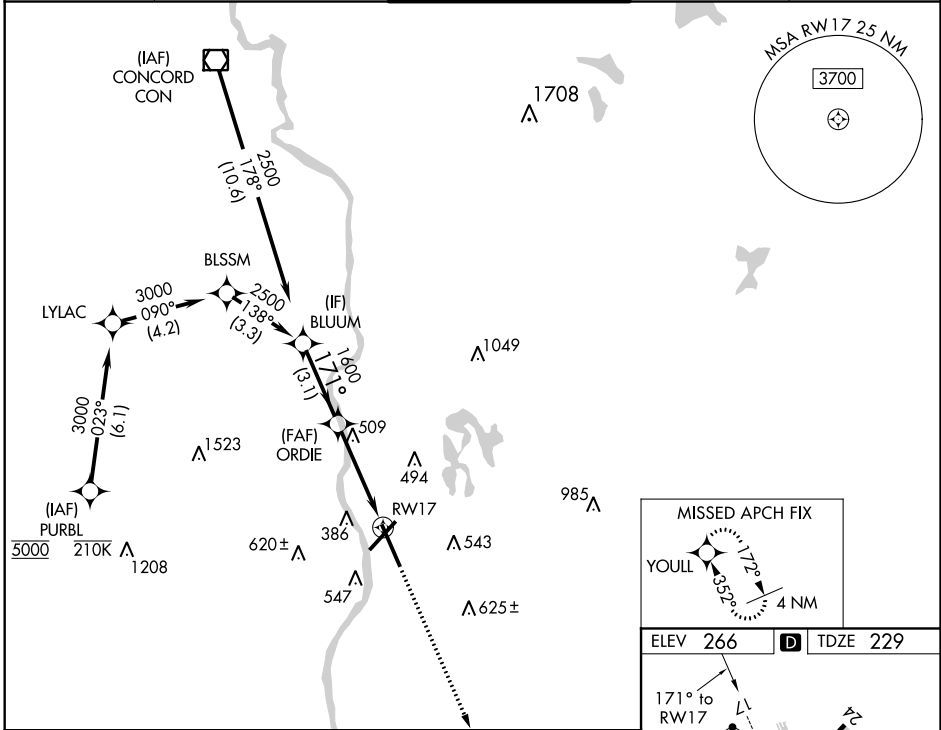
RNAV (GPS) Y RWY 17

MANCHESTER (MHT)

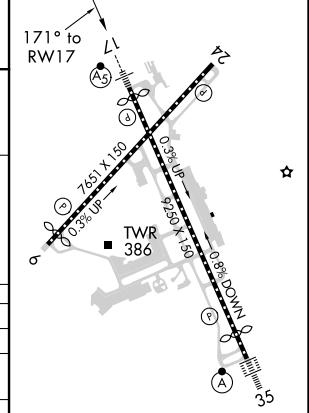
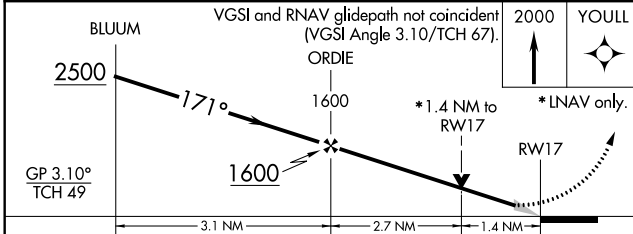
⚠ For uncompensated Baro-VNAV systems, LNAV/VNAV NA below -20°C (-4°F) or above 48°C (118°F). DME/DME RNP-0.3 NA. When local altimeter setting not received, use Nashua altimeter setting: increase LPV DA to 461; increase LNAV/VNAV DA to 761; increase all MDA 40 feet and LNAV Cat C/D visibility 1/8 mile and Circling Cat C visibility 1/4 mile. VDP and Baro-VNAV NA when using Nashua altimeter setting.

MALSR

MISSED APPROACH:
 Climb to 2000 direct YOULL and hold.

| | | | | |
|-----------------------|--|--|-------------------------|--------------------------|
| ATIS 119.55 | BOSTON APP CON 124.9 269.075 | MANCHESTER TOWER 121.3 239.025 | GND CON 121.9 | CLNC DEL 135.9 |
|-----------------------|--|--|-------------------------|--------------------------|



| | |
|----------|-------------------|
| ELEV 266 | D TDZE 229 |
|----------|-------------------|



| CATEGORY | A | B | C | D |
|-------------------|--------|---------------|----------------------|-------------------------------|
| LPV DA | 429/18 | | 200 (200-1/2) | |
| LNAV/VNAV DA | 729/60 | | 500 (500-1/4) | |
| LNAV MDA | 760/24 | 531 (500-1/2) | 760/60 | 531 (500-1/4) |
| C CIRCLING | 880-1 | 614 (700-1) | 980-2 714 (800-2) | 1100-2 3/4 834 (900-2 3/4) |

REIL Rwy 6 and 24
 TDZ/CL Rwy 17 and 35
 HIRL Rwy 6-24 and 17-35

NE-1, 25 FEB 2021 to 25 MAR 2021

NE-1, 25 FEB 2021 to 25 MAR 2021