

(HEDLY2.HEDLY) 18088

AL-257 (FAA)

MIAMI INTL (MIA)

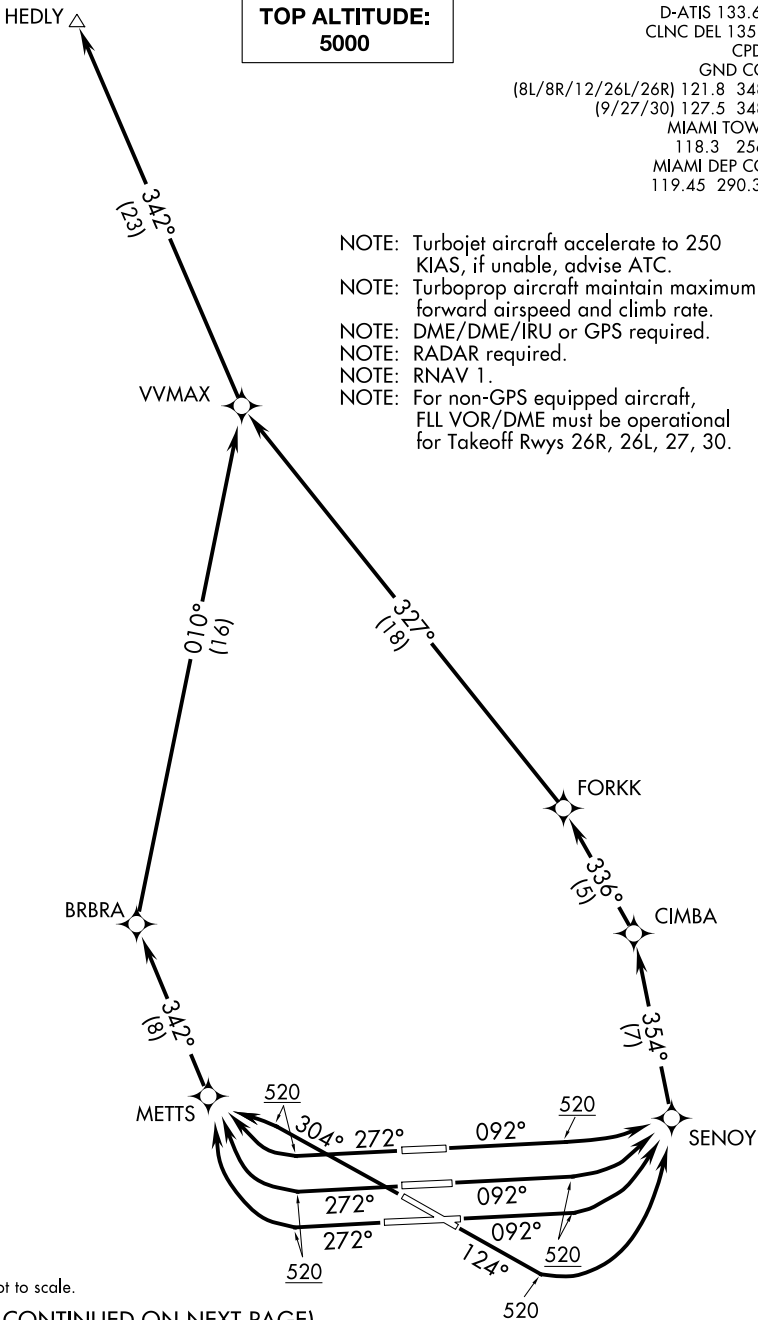
# HEDLY TWO DEPARTURE (RNAV)

MIAMI, FLORIDA

**TOP ALTITUDE:  
5000**

D-ATIS 133.675  
 CLNC DEL 135.35  
 CPDLC  
 GND CON  
 (8L/8R/12/26L/26R) 121.8 348.6  
 (9/27/30) 127.5 348.6  
 MIAMI TOWER  
 118.3 256.9  
 MIAMI DEP CON  
 119.45 290.325

- NOTE: Turbojet aircraft accelerate to 250 KIAS, if unable, advise ATC.
- NOTE: Turboprop aircraft maintain maximum forward airspeed and climb rate.
- NOTE: DME/DME/IRU or GPS required.
- NOTE: RADAR required.
- NOTE: RNAV 1.
- NOTE: For non-GPS equipped aircraft, FLL VOR/DME must be operational for Takeoff Rwy 26R, 26L, 27, 30.



NOTE: Chart not to scale.

(NARRATIVE CONTINUED ON NEXT PAGE)

# HEDLY TWO DEPARTURE (RNAV)

(HEDLY2.HEDLY) 30APR15

MIAMI, FLORIDA  
MIAMI INTL (MIA)

SE-3, 25 FEB 2021 to 25 MAR 2021

SE-3, 25 FEB 2021 to 25 MAR 2021