

HITAG TWO DEPARTURE (RNAV)

SE-3, 25 FEB 2021 to 25 MAR 2021

D-ATIS 133.675
 CLNC DEL 135.35
 CPDIC
 GND CON
 (Rwys 8L/8R/12/26L/26R)
 121.8 348.6
 (Rwys 9/27/30)
 127.5 348.6
 MIAMI TOWER
 118.3 256.9
 MIAMI DEP CON
 119.45 290.325

HITAG TWO DEPARTURE (RNAV)

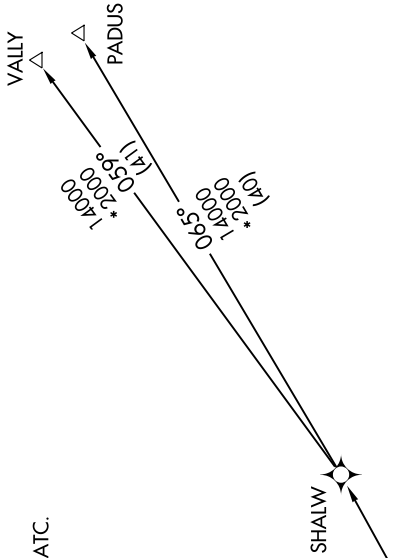
(HITAG2.HITAG) 30APR15

MIAMI, FLORIDA
 MIAMI INTL (MIA)

TOP ALTITUDE:
5000

TAKEOFF MINIMUMS:
 Rwys 26L/R, 27, 30: NA per ATC.
 Rwys 8L/R, 9, 12: Standard with
 minimum climb of 500' per NM to 520.

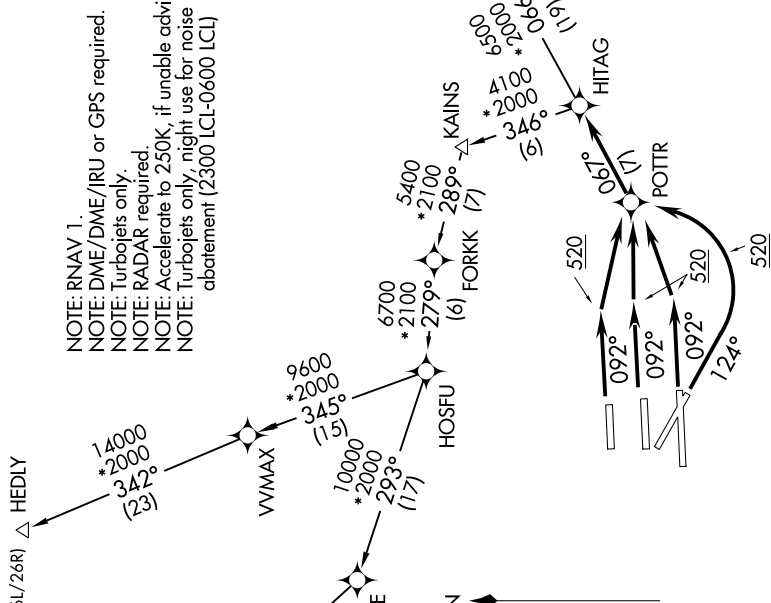
NOTE: RNAV 1.
 NOTE: DME/DME/IRU or GPS required.
 NOTE: Turbojets only.
 NOTE: RADAR required.
 NOTE: Accelerate to 250K, if unable advise ATC.
 NOTE: Turbojets only, night use for noise
 abatement (2300 LCL-0600 [CL])



DEPARTURE ROUTE DESCRIPTION

TAKEOFF RUNWAYS 8L/R, 9: Climb heading 092° to 520, then direct POTTR, then on depicted route to HITAG. Thence, . . .
TAKEOFF RUNWAY 12: Climb heading 124° to 520, then turn left direct POTTR, then on depicted route to HITAG. Thence, . . .
 . . . Via transition or assigned route, maintain 5000 or as assigned by ATC, expect climb to filed altitude/flight level within 10 minutes after departure.

HEDLY TRANSITION (HITAG2.HEDLY):
PADUS TRANSITION (HITAG2.PADUS):
VALLY TRANSITION (HITAG2.VALLY):
WINCO TRANSITION (HITAG2.WINCO):



NOTE: Chart not to scale.

SE-3, 25 FEB 2021 to 25 MAR 2021