

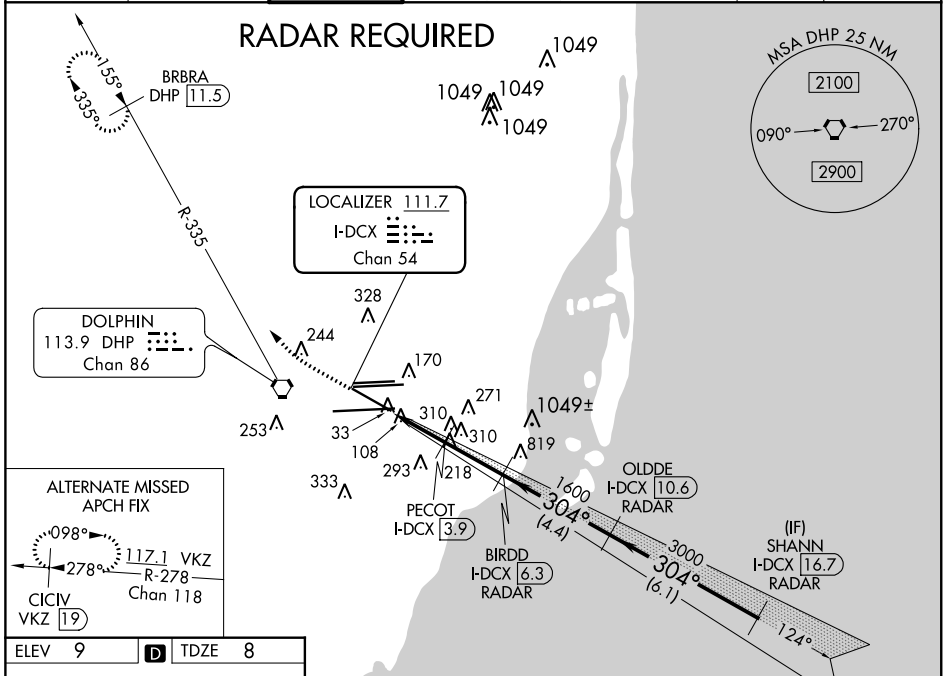
LOC/DME I-DCX 111.7 Chan 54	APP CRS 304°	Rwy Idg TDZE Apt Elev	7913 8 9
---	------------------------	-----------------------------	-------------------------------------

ILS or LOC RWY 30

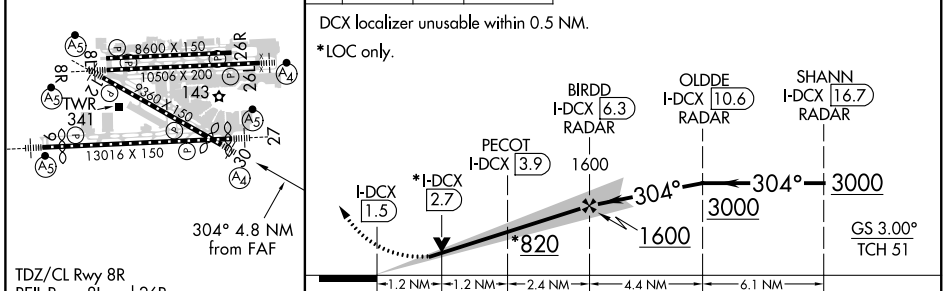
MIAMI INTL (MIA)

<p>DME required. Inop table does not apply.</p>	<p>MALS</p>	<p>MISSED APPROACH: Climb to 800 then climbing right turn to 2000 on heading 310° and DHP VORTAC R-335 to BRBRA/11.5 DME and hold.</p>

D-ATIS ARR 119.15 DEP 133.675	MIAMI APP CON 124.85 322.3	MIAMI TOWER 118.3 256.9	GND CON 121.8 (8L/8R/12/26L/26R) 127.5 (9/27/30)	348.6	CLNC DEL 135.35	CPDLC
---	--------------------------------------	-----------------------------------	--	--------------	---------------------------	-------



800	2000	DHP R-335	BRBRA DHP 11.5	VGSI and ILS glidepath not coincident (VGSI Angle 3.00/TCH 71).
-----	------	-----------	----------------	---



FAF to MAP 4.8 NM					
Knots	60	90	120	150	180
Min:Sec	4:48	3:12	2:24	1:55	1:36
CATEGORY	A		B		D
S-ILS 30	258/40		250 (300-¾)		
S-LOC 30	460/40		452 (500-¾)	460/60	460-1½
			452 (500-1¼)	452 (500-1½)	

SE-3, 25 FEB 2021 to 25 MAR 2021

SE-3, 25 FEB 2021 to 25 MAR 2021