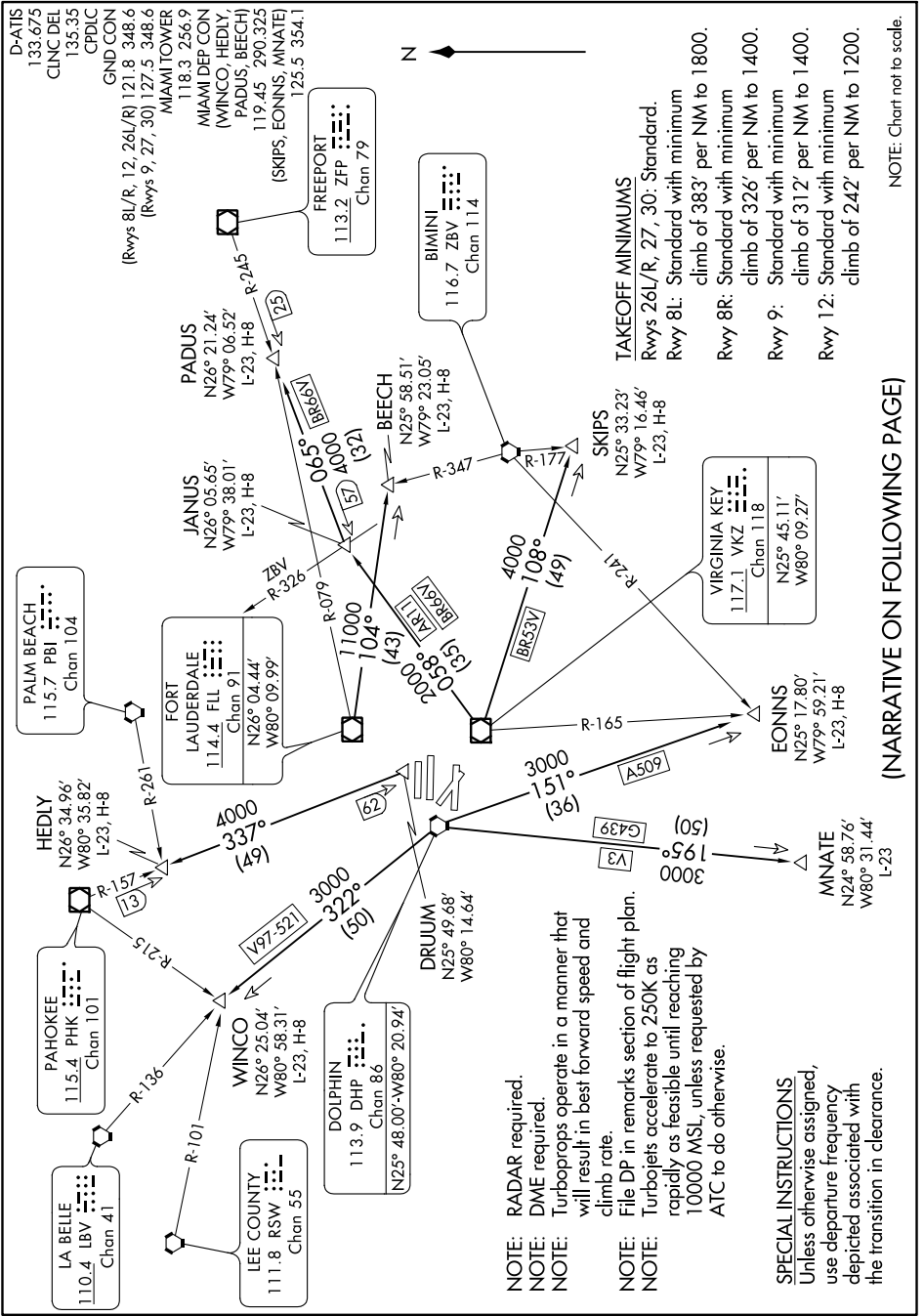


# MIAMI SEVEN DEPARTURE

SE-3, 25 FEB 2021 to 25 MAR 2021



# MIAMI SEVEN DEPARTURE

NOTE: RADAR required.  
 NOTE: DME required.  
 NOTE: Turboprops operate in a manner that will result in best forward speed and climb rate.

NOTE: File DP in remarks section of flight plan.  
 NOTE: Turboprops accelerate to 250K as rapidly as feasible until reaching 10000 MSL, unless requested by ATC to do otherwise.

**SPECIAL INSTRUCTIONS**  
 Unless otherwise assigned, use departure frequency depicted associated with the transition in clearance.

**TAKEOFF MINIMUMS**  
 Rwy 26L/R, 27, 30: Standard.  
 Rwy 8L: Standard with minimum climb of 383' per NM to 1800.  
 Rwy 8R: Standard with minimum climb of 326' per NM to 1400.  
 Rwy 9: Standard with minimum climb of 312' per NM to 1400.  
 Rwy 12: Standard with minimum climb of 242' per NM to 1200.

(NARRATIVE ON FOLLOWING PAGE)

NOTE: Chart not to scale.

SE-3, 25 FEB 2021 to 25 MAR 2021