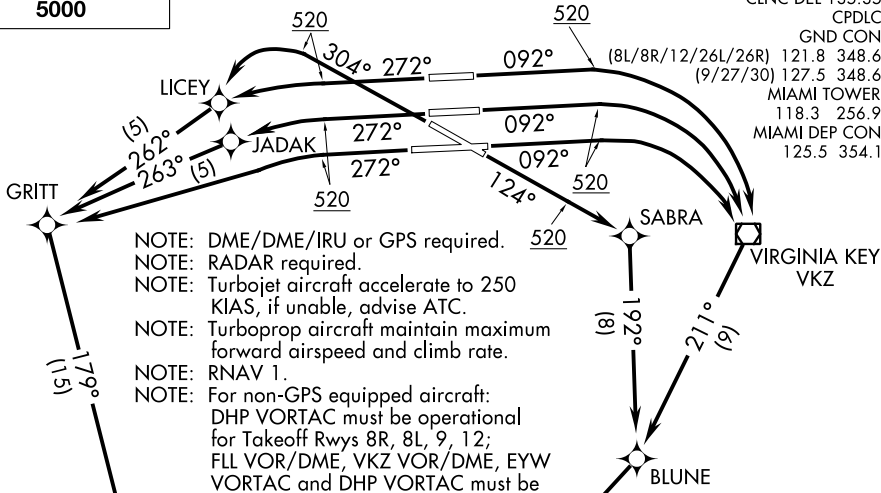


# MNATE TWO DEPARTURE(RNAV)

**TOP ALTITUDE:**  
**5000**

D-ATIS 133.675  
CLNC DEL 135.35  
CPDLC  
GND CON  
121.8 348.6  
(9/27/30) 127.5 348.6  
MIAMI TOWER  
118.3 256.9  
MIAMI DEP CON  
125.5 354.1



NOTE: DME/DME/IRU or GPS required.  
 NOTE: RADAR required.  
 NOTE: Turbojet aircraft accelerate to 250 KIAS, if unable, advise ATC.  
 NOTE: Turboprop aircraft maintain maximum forward airspeed and climb rate.  
 NOTE: RNAV 1.  
 NOTE: For non-GPS equipped aircraft:  
 DHP VORTAC must be operational for Takeoff Rwy 8R, 8L, 9, 12;  
 FLL VOR/DME, VKZ VOR/DME, EYW VORTAC and DHP VORTAC must be operational for Takeoff Rwy 26R, 26L, 27, 30.

### TAKEOFF MINIMUMS

- Rwy 8L: 300-1¼ with minimum obstacle climb of 221 feet per NM to 1200 or Standard with minimum obstacle climb of 382 feet per NM to 300, minimum ATC climb of 500 feet per NM to 520.
- Rwy 8R: Standard with minimum obstacle climb of 237 feet per NM to 1200, minimum ATC climb of 500 feet per NM to 520.
- Rwy 9: Standard with minimum obstacle climb of 233 feet per NM to 1200, minimum ATC climb of 500 feet per NM to 520.
- Rwy 12: Standard with minimum obstacle climb of 226 feet per NM to 1200, minimum ATC climb of 500 feet per NM to 520.
- Rwys 26R, 26L, 27, 30: Standard with minimum ATC climb of 300 feet per NM to 520.

(NARRATIVE CONTINUED ON NEXT PAGE)

NOTE: Chart not to scale.

# MNATE TWO DEPARTURE(RNAV)

SE-3, 25 FEB 2021 to 25 MAR 2021

SE-3, 25 FEB 2021 to 25 MAR 2021